

**Oil & Gas Docket No. 09-0273416**  
**Proposal for Decision**

**APPENDIX 1**

Franklin Richards  
A-1297

A11  
10H

DocId: No. 09-027  
April 23, 2012  
XTO Energy Inc.

# UNIT PLAT XTO ENERGY INC. WESCO A1 UNIT 10H TARRANT COUNTY, TEX SCALE: 1" = 500'

From the Office of ELS Surveying & Mapping  
Henry L. Johnson & Associates  
9805 East Banthead Highway, Suite  
Aledo, Texas  
Phone (817) 441-6113

Job No. 318123

Wesco A1 Unit 10H  
229.597 Acres (Overall)  
215.215 Acres (Leased)

William Welch  
A-1844

Joshua N. Ellis  
A-463

Forest Park A Unit  
(XTO Energy Inc.)

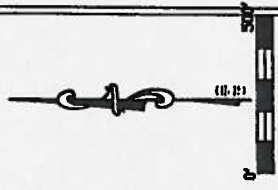
Thelbert S. Harris  
A-688

A1 Unit  
10H BL

Forest Park B Unit  
(XTO Energy Inc.)

Peter Rouché  
A-1340

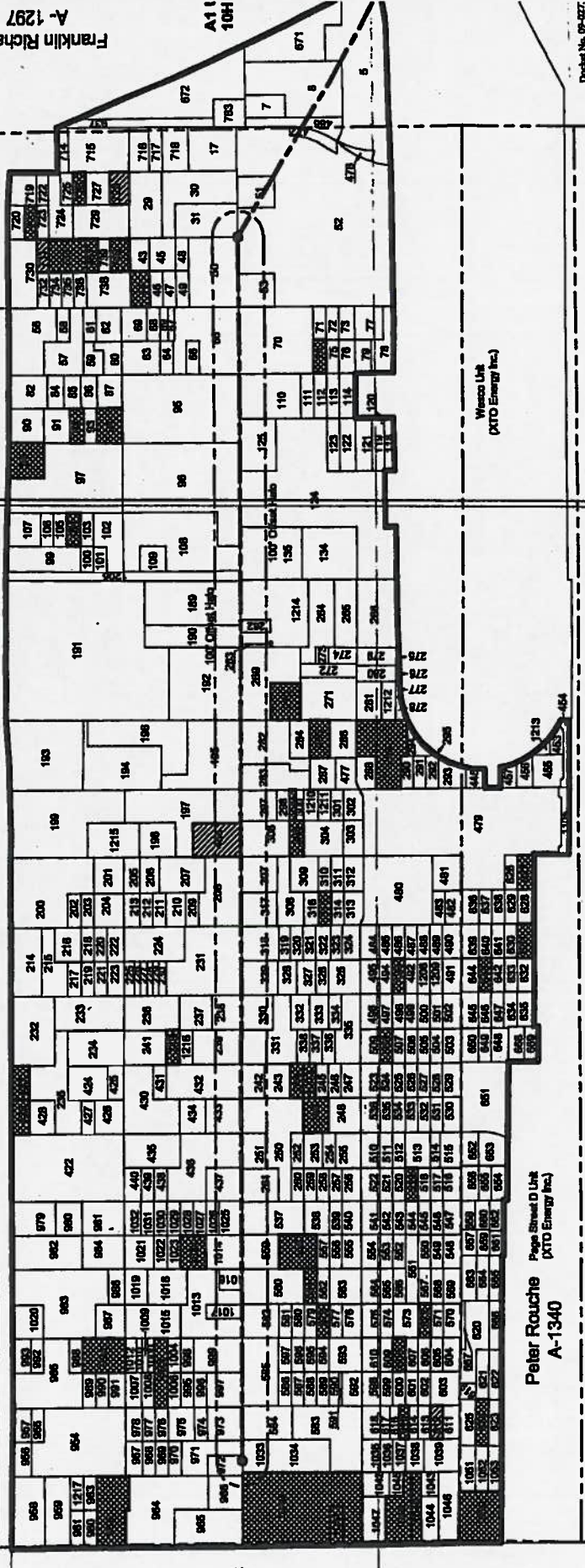
Page Street D Unit  
(XTO Energy Inc.)



April 20, 2012  
The location shown hereon was obtained from tract  
lines as evidenced by occupation. Distances shown  
are not intended to be definitive in establishing title  
boundaries. The acreage shown hereon were  
provided by owner. Bearings are based on NAD 27  
State Plane Coordinates.

**FOR THE EXCLUSIVE USE OF  
XTO ENERGY INC.**

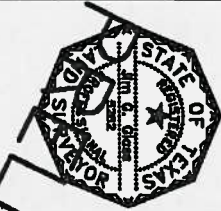
Drafter: S.W.



**Oil & Gas Docket No. 09-0273416**  
**Proposal for Decision**

**APPENDIX 2**

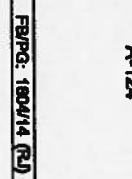
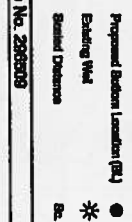
Surface Location is located in the city of Fort Worth, Texas  
 "FORT WORTH" Quadrangle



STATE OF TEXAS  
 I, John G. Glenn, Registered Professional Land Surveyor, No. 5252, do hereby certify the above plat to be true and correct to the best of my knowledge.  
 Henry L. Johnson & Associates  
 ELS Surveying & Mapping, Inc.  
 Registered Professional Land Surveyor No. 5252  
 April 19, 2010.  
 The location shown hereon was obtained from track lines as evidenced by occupation. Distances shown are not intended to be definitive in establishing the boundaries. The acreage shown hereon was provided by others. Bearings are based on NAD 27 State Plane Coordinates.  
**FOR THE EXCLUSIVE USE OF**  
**XTO ENERGY INC.**  
 Drafted: C.S.  
 Checked: S.W.

MINNERY  
 William Welch  
 A-1844  
 S.O. Moulton Sub.  
 Vol. 28 Pg. 182  
 Belvue Hill Add.  
 Vol. 28 Pg. 298  
 Belvue Hill Add.  
 Vol. 28 Pg. 31  
 Belvue Hill Add.  
 Vol. 108 Pg. 25  
 Belvue Hill Add.  
 Vol. 28 Pg. 31  
 Goldenhill Sub.  
 Vol. 108 Pg. 88  
 Peter Rouchas  
 A-1340  
 Moolde & Evans Sub.  
 Vol. 62-A Pg. 1  
 John Bursey  
 A-124  
 Union Pacific RR Co.  
 Vol. 610 Pg. 181  
 Union Pacific RR Co.  
 Vol. 7 Pg. 210

Franklin Richards  
 A-1287  
 Roseville Add.  
 Vol. 289-292 Pg. 68  
 Tarrant County Hospital District  
 Vol. 18006 Pg. 241  
 Roseville Add.  
 Vol. 289-137 Pg. 82  
 Wescos A Unit  
 64,822 Acres  
 Wescos A Unit 1H BL  
 Elev: 848'  
 Wescos A Unit 1H BL  
 Elev: 848'  
 Union Pacific RR Co.  
 Vol. 7 Pg. 210



Job No. 288538  
 PARC: 1804/4 (R)



Wescos A Unit 1H BL  
 Page D 1H BL  
 Wescos B 1H BL  
 MTR

Drilling Direction:  
 The pad is located in the City of Fort Worth, Texas 1-85 to Roseville Street, Go West on Roseville Street approx. 607' to the entrance to the pad on the left.

**WELL LOCATION PLAT**  
**XTO ENERGY INC.**  
**WESCO A UNIT 1H**  
**FRANKLIN RICHARDS SURVEY**  
**ABSTRACT NO. 1287**  
**TARRANT COUNTY, TEXAS**  
**SCALE: 1" = 500'**  
 From the Office of ELS Surveying & Mapping, Inc. / Henry L. Johnson & Associates - Abilene, Texas  
 Map No. T-1084 - Rule 37

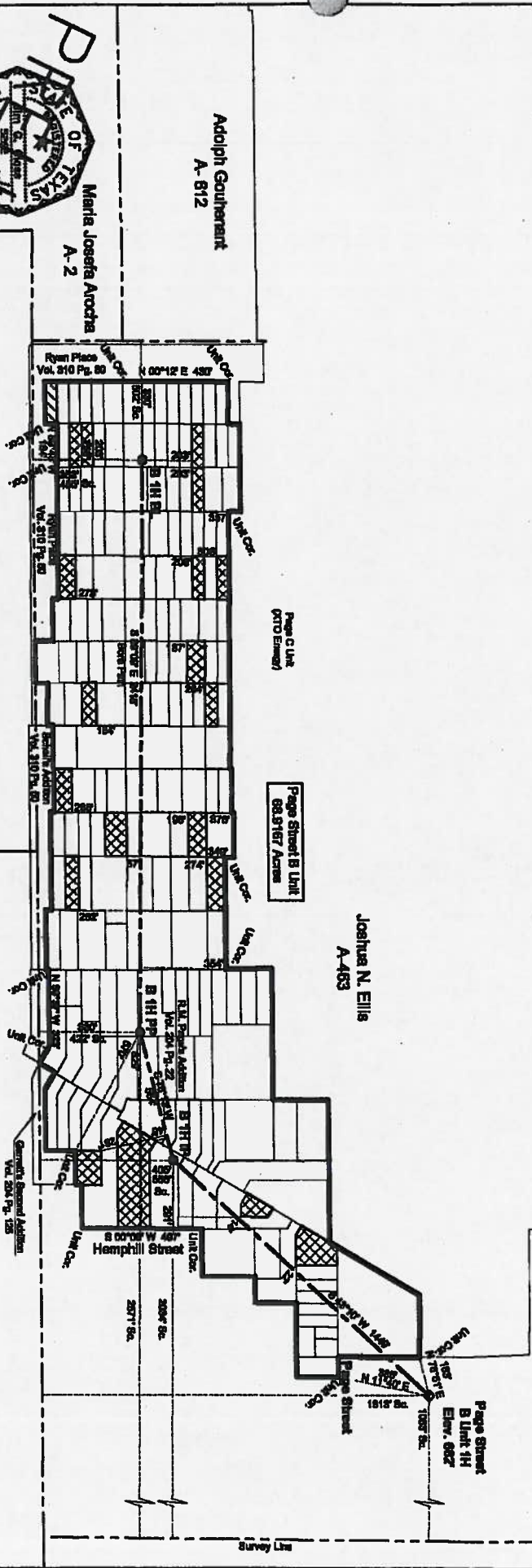
Surface Location is in the City of Fort Worth, Texas  
 "Fort Worth" Quadrangle



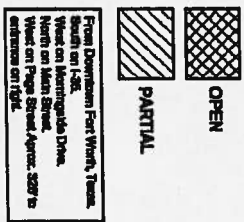
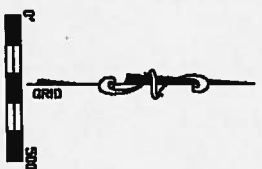
STATE OF TEXAS  
 I, Jim G. Utam, Registered Professional Land Surveyor, do hereby certify the above plat to be true and correct to the best of my knowledge.  
 Henry L. Johnson & Associates  
 ELS Surveying & Mapping, Inc.

Registered Professional Land Surveyor No. 6282  
 April 18, 2010.  
 The location shown hereon was selected from these lines as evidenced by measurements. Distances shown are not intended to be definitive in establishing the boundaries. The bearings shown hereon were produced by other bearings and based on NAD 27 State Plane Coordinates.  
**FOR THE EXCLUSIVE USE OF  
 XTO ENERGY INC.**

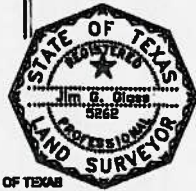
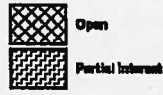
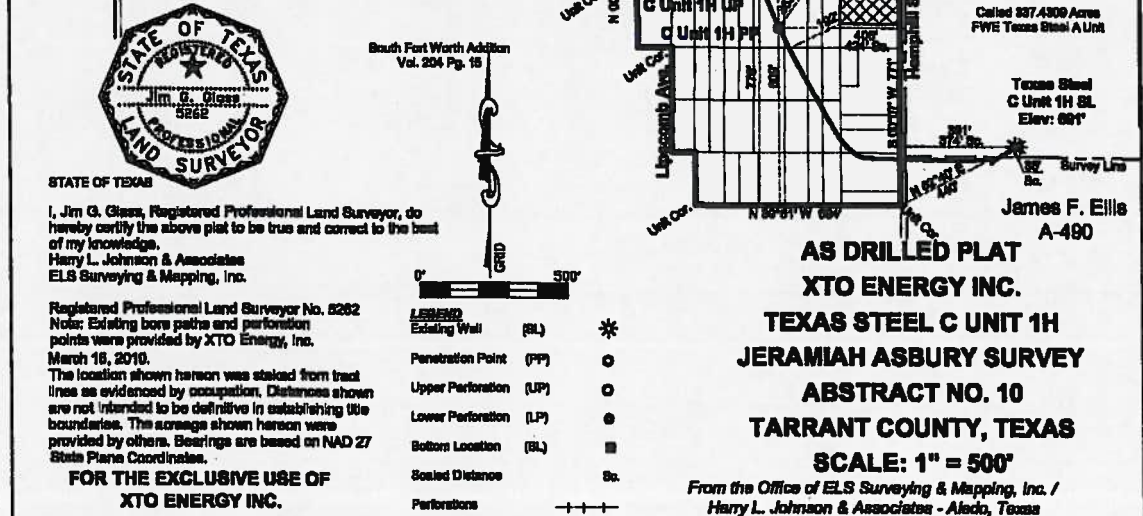
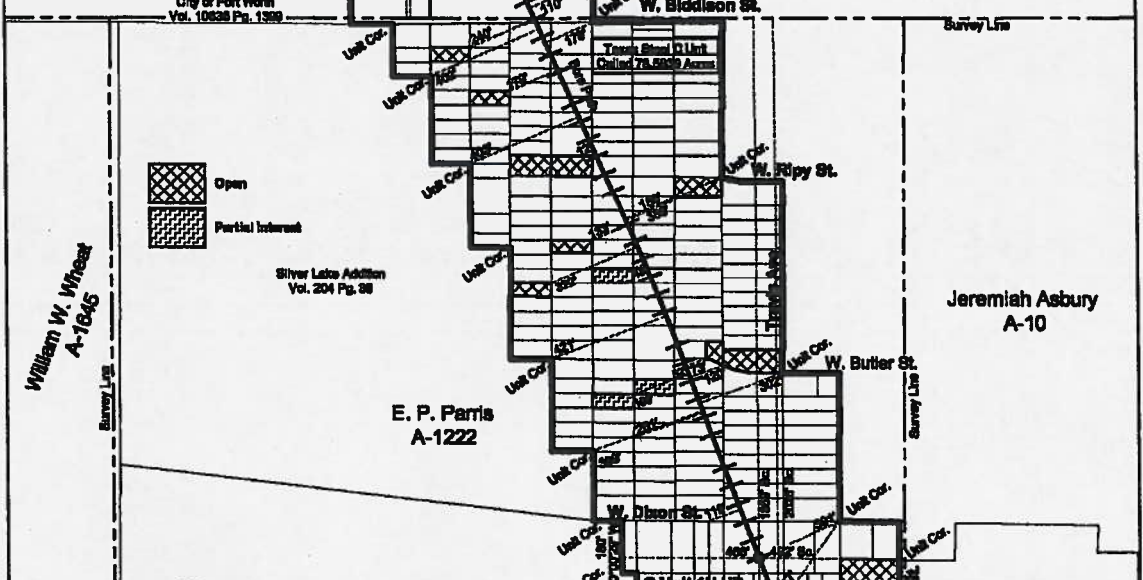
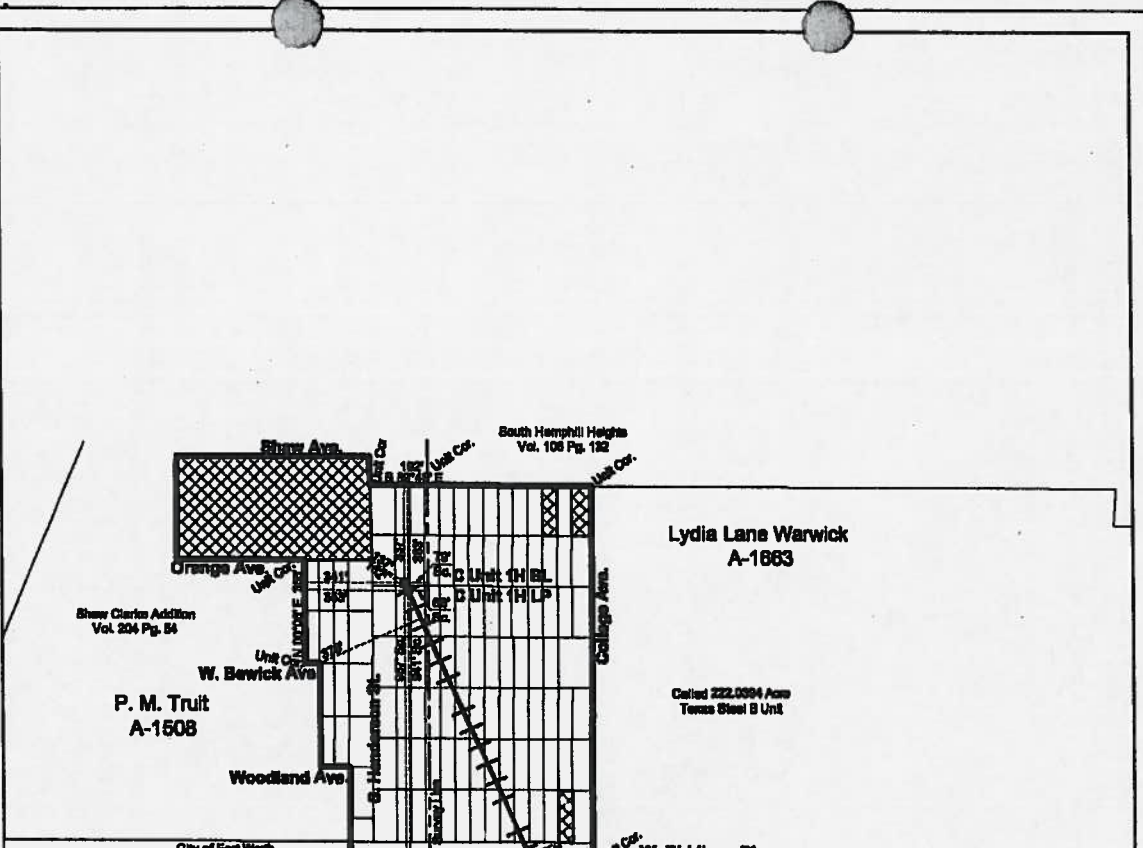
Drafter: S.W.      Checked:      Job No. 280885      Map No. T-1095 Rule 37



- LEGEND**
- Proposed Well (B1)
  - Proposed Production Facility
  - Proposed Section Location (B1)
  - Ending Well
  - Section Division



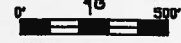
**WELL LOCATION PLAT**  
**XTO ENERGY INC.**  
**PAGE STREET B UNIT 1H**  
**JOSHUA N. ELLIS SURVEY**  
**ABSTRACT NO. 463**  
**TARRANT COUNTY, TEXAS**  
**SCALE: 1" = 500'**



STATE OF TEXAS  
 I, Jim G. Glass, Registered Professional Land Surveyor, do hereby certify the above plat to be true and correct to the best of my knowledge.  
 Harry L. Johnson & Associates  
 ELS Surveying & Mapping, Inc.

Registered Professional Land Surveyor No. 5262  
 Note: Existing bore paths and perforation points were provided by XTO Energy, Inc. March 18, 2010.  
 The location shown hereon was staked from tract lines as evidenced by occupation. Distances shown are not intended to be definitive in establishing the boundaries. The acreage shown hereon were provided by others. Bearings are based on NAD 27 State Plane Coordinates.

**FOR THE EXCLUSIVE USE OF XTO ENERGY INC.**

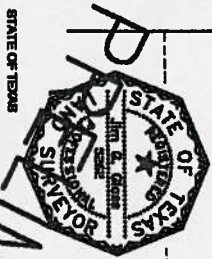


<b>LEGEND</b>		
Existing Well	(BL)	*
Penetration Point	(PP)	o
Upper Perforation	(UP)	o
Lower Perforation	(LP)	o
Bottom Location	(BL)	■
Scaled Distance	Sa.	
Perforations		—+—+—

**AS DRILLED PLAT  
 XTO ENERGY INC.  
 TEXAS STEEL C UNIT 1H  
 JERAMIAH ASBURY SURVEY  
 ABSTRACT NO. 10  
 TARRANT COUNTY, TEXAS  
 SCALE: 1" = 500'**

*From the Office of ELS Surveying & Mapping, Inc. / Harry L. Johnson & Associates - Alamo, Texas*

Surface Location is located in the city of Fort Worth, Texas  
 -FORT WORTH- Quadrangle



I, **John G. Giam**, Registered Professional Land Surveyor, do hereby certify the above plat to be true and correct to the best of my knowledge.  
 Henry L. Johnson & Associates  
 ELS Surveying & Mapping, Inc.

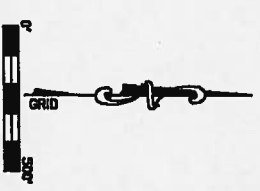
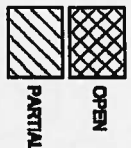
Registered Professional Land Surveyor No. 62822

April 22, 2010.

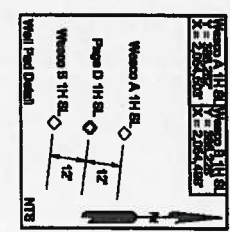
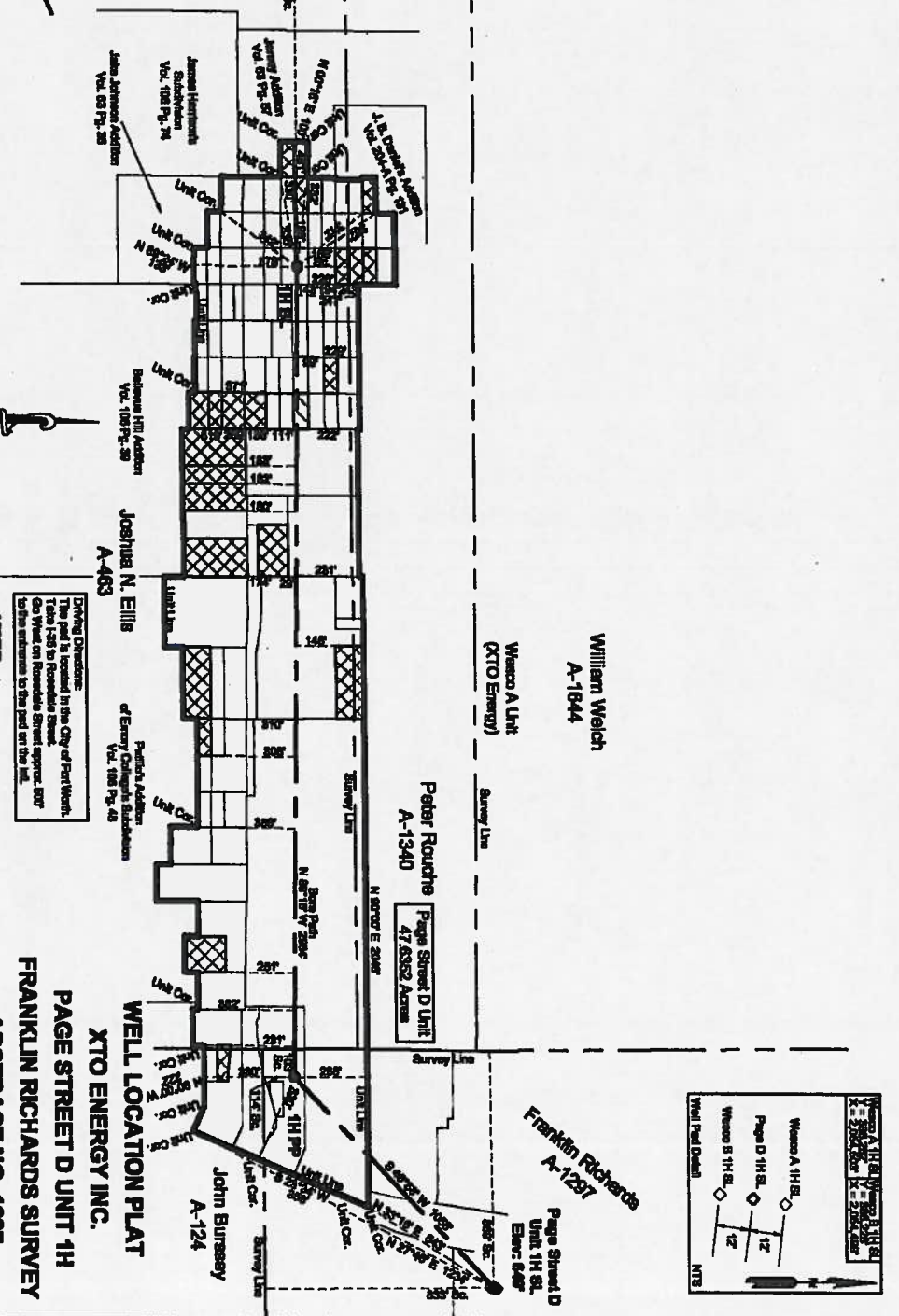
The location shown hereon was obtained from these lines as evidenced by comparison. Differences shown are not intended to be definitive in establishing the boundaries. The acreage shown hereon were provided by others. Bearings are based on NAD 27 State Plane Coordinate.

**FOR THE EXCLUSIVE USE OF  
 XTO ENERGY INC.**

**MINNAPARY**



Drafter: C.S. Checked: S.W. Job No. 292872 FR/PG: 1804/14 (SU) Map No. T-1079 - Rule 57



**DRIVING DIRECTIONS:**  
 This plat is located in the City of Fort Worth, Texas (546 to Rockwall Street).  
 Go West on Rockwall Street approximately 300' to the entrance to the plat on the left.

- Legend
- Proposed Well (WJ) ◆
- Proposed Foundation Point (FP) ○
- Proposed Station Location (SL) ●
- Existing Well \*
- Scaled Distance 8x

**WELL LOCATION PLAT  
 XTO ENERGY INC.  
 FRANKLIN RICHARDS SURVEY  
 PAGE STREET D UNIT 1H  
 ABSTRACT NO. 1297  
 TARRANT COUNTY, TEXAS  
 SCALE: 1" = 500'**

From the Office of ELS Surveying & Mapping, Inc. / Henry L. Johnson & Associates - Abilene, Texas

STATE PLANE COORDINATE DATUM  
 1827 MVD - TEXAS NORTH CENTRAL ZONE  
 NAD83 UNIT 1H  
 SURFACE LOCATION  
 (CALCULATED BY E.L.S.)

X = 2,054,505' Y = 386,264'  
 LAT = 32°43'41.84" N LONG = 97°19'21.02" W  
 PENETRATION POINT

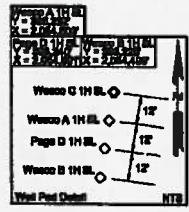
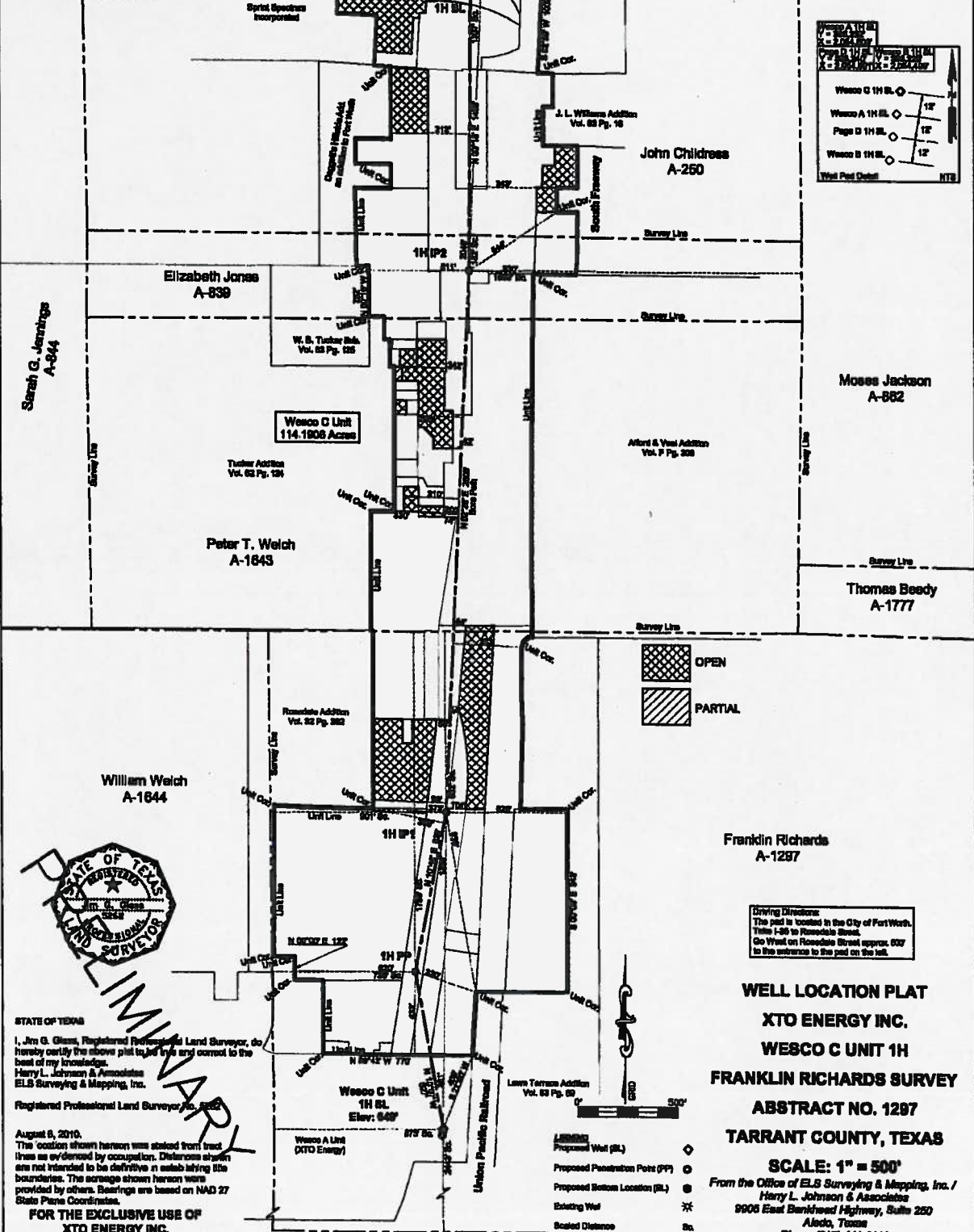
X = 2,054,380' Y = 387,078'  
 LAT = 32°43'48.90" N LONG = 97°19'23.60" W  
 INFLECTION POINT 1

X = 2,054,317' Y = 387,903'  
 LAT = 32°43'58.06" N LONG = 97°19'21.75" W  
 INFLECTION POINT 2

X = 2,054,637' Y = 390,708'  
 LAT = 32°44'25.79" N LONG = 97°19'20.88" W  
 BOTTOM LOCATION

X = 2,054,645' Y = 392,195'  
 LAT = 32°44'40.53" N LONG = 97°19'20.16" W

Surface Location is located in the city of Fort Worth, Texas  
 "FORT WORTH" Quadrange



STATE OF TEXAS

I, J. G. Glass, Registered Professional Land Surveyor, do hereby certify the above plat to be true and correct to the best of my knowledge.  
 Harry L. Johnson & Associates  
 ELS Surveying & Mapping, Inc.  
 Registered Professional Land Surveyor No. 3552

August 9, 2016.  
 The location shown hereon was obtained from best lines as evidenced by occupation. Discrepancies shown are not intended to be definitive in establishing title boundaries. The acreage shown hereon was provided by others. Bearings are based on NAD 27 State Plane Coordinates.

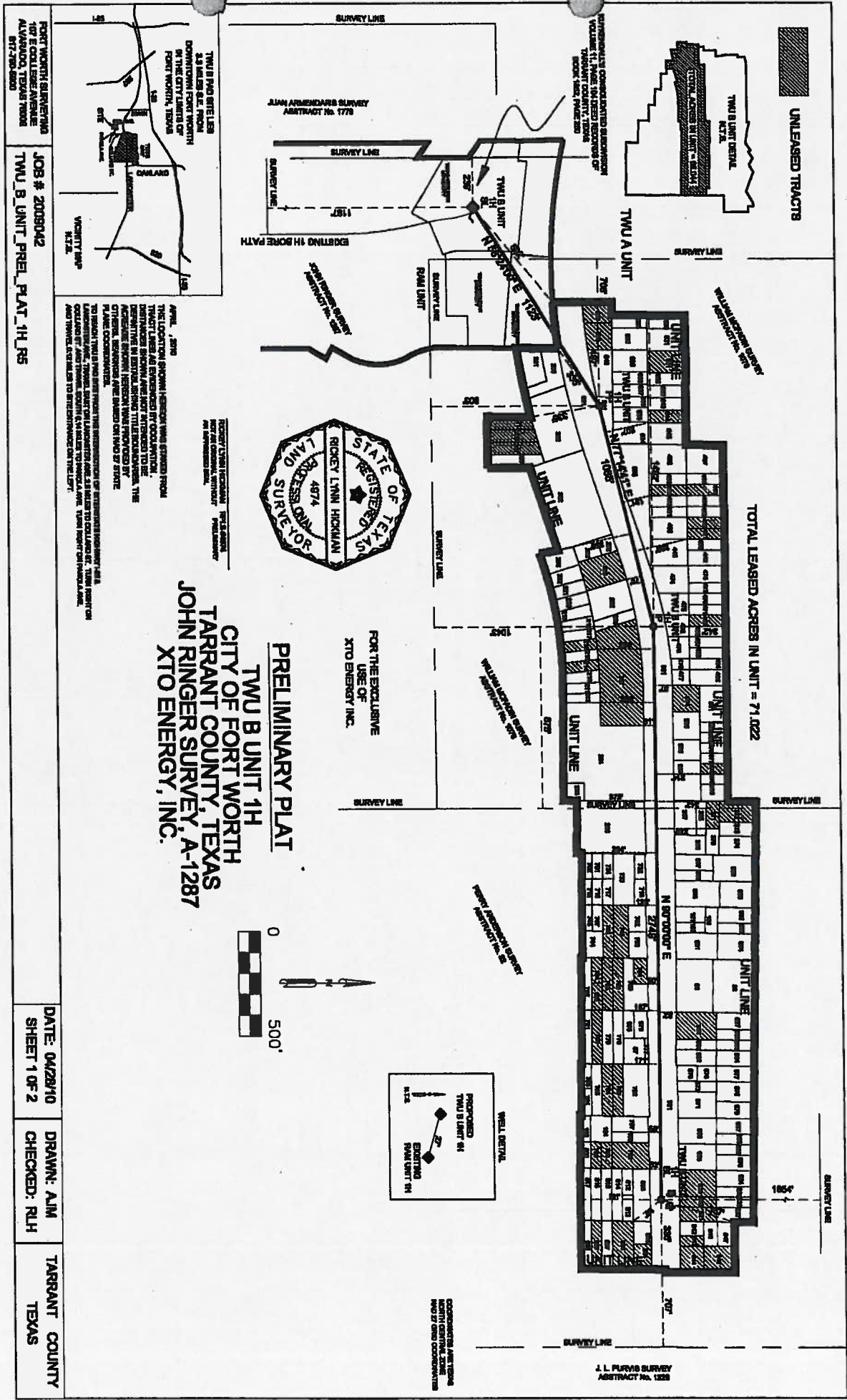
**FOR THE EXCLUSIVE USE OF  
 XTO ENERGY INC.**

Driving Directions:  
 The plat is located in the City of Fort Worth, Title I-36 to Romoadale Street. Go West on Romoadale Street approx. 600' to the entrance to the pad on the left.

**WELL LOCATION PLAT**  
**XTO ENERGY INC.**  
**WESCO C UNIT 1H**  
**FRANKLIN RICHARDS SURVEY**  
**ABSTRACT NO. 1297**  
**TARRANT COUNTY, TEXAS**

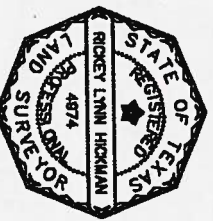
**SCALE: 1" = 500'**  
 From the Office of ELS Surveying & Mapping, Inc. / Harry L. Johnson & Associates  
 9906 East Bankhead Highway, Suite 250  
 Aliso, Texas  
 Phone (817) 441-8113





UNLEASED TRACTS

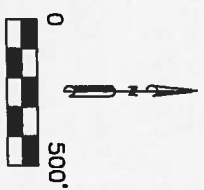
TOTAL LEASED ACRES IN UNIT = 71.022



FOR THE EXCLUSIVE  
USE OF  
XTO ENERGY INC.

**PRELIMINARY PLAT**

**TWU B UNIT 1H**  
CITY OF FORT WORTH  
TARRANT COUNTY, TEXAS  
JOHN RINGER SURVEY, A-1287  
XTO ENERGY, INC.



REPORT NORTH BOUNDING  
100 E COLLIER AVENUE  
AVALARDO, TEXAS 76008  
817-293-8800

JOB # 2008042  
TWU\_B\_UNIT\_PREL\_PLAT\_1H\_RS

DATE: 04/28/10  
SHEET 1 OF 2

DRAWN: AJM  
CHECKED: RLH

TARRANT COUNTY  
TEXAS

APRIL, 2010  
THE LOCATION SHOWN HEREON WAS OBTAINED FROM  
THEY ARE NOT GUARANTEED BY COLONY, INC.  
OTHERS, SURVEYORS ARE SHOWN ON THIS PLAT  
PLANS COOPERATION.

TO RECALCULATE THE SURVEY THE SURVEYOR OF INTERESTED PARTIES  
MAY BE CONTACTED AT THE OFFICE OF THE SURVEYOR OF TARRANT COUNTY  
4001 THOMAS, 4TH FLOOR, FORT WORTH, TEXAS 76102-1000

RICKY LYNN HICKMAN  
REGISTERED LAND SURVEYOR  
NO. 4874

J. L. PURVIS SURVEY  
ABSTRACT No. 1228