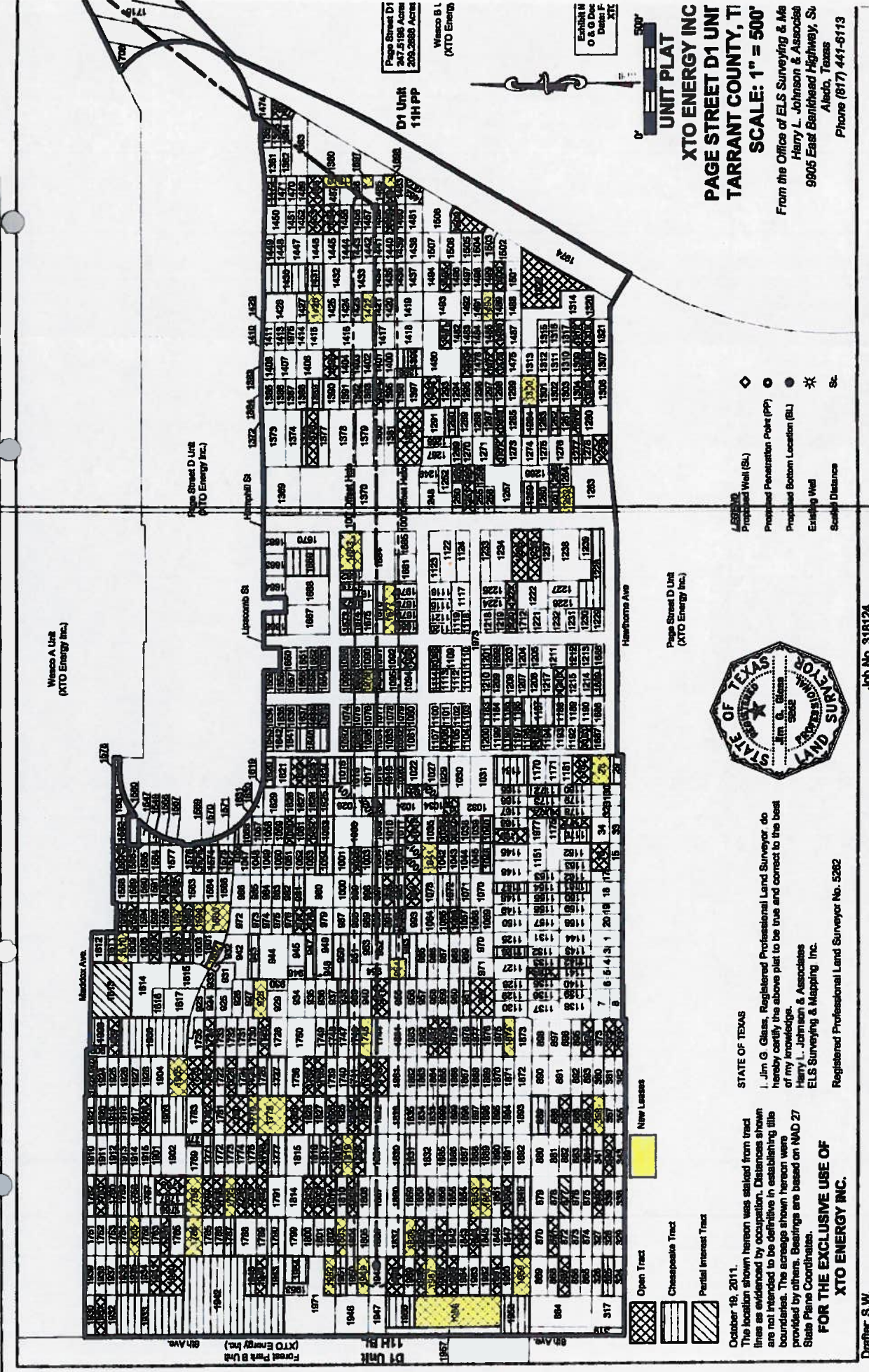


Oil & Gas Docket No. 09-0273417
Proposal for Decision

APPENDIX 1



UNIT PLAT
XTO ENERGY INC
PAGE STREET D1 UNIT
TARRANT COUNTY, TX
SCALE: 1" = 500'

From the Office of ELS Surveying & Mapping
 Harry L. Johnson & Associates
 9805 East Barthes Road, Suite 100
 Alamo, Texas
 Phone (817) 441-6113

- Proposed Well (SL)
- Proposed Penetration Point (PP)
- Proposed Bottom Location (BL)
- Existing Well
- Scale Distance



STATE OF TEXAS
 I, Jim G. Glass, Registered Professional Land Surveyor, do hereby certify the above plat to be true and correct to the best of my knowledge.
 Harry L. Johnson & Associates
 ELS Surveying & Mapping Inc.
 Registered Professional Land Surveyor No. 5262

October 18, 2011.
 The location shown hereon was ascertained from field lines as evidenced by occupation. Distances shown are not intended to be definitive in establishing title boundaries. The acreage shown hereon was provided by others. Bearings are based on NAD 83 State Plane Coordinates.
FOR THE EXCLUSIVE USE OF
XTO ENERGY INC.

Job No. 318124

Drafter: S.W.