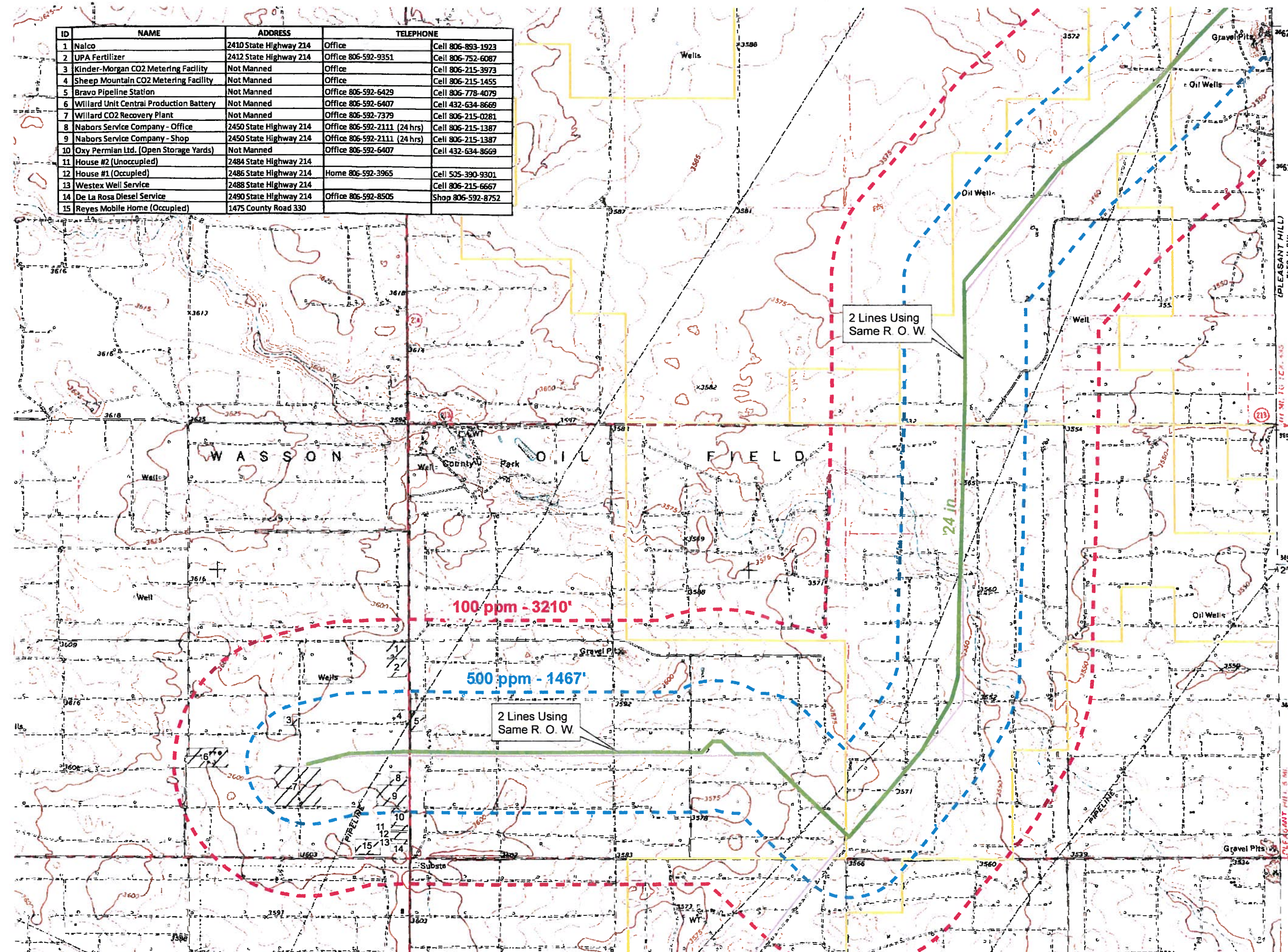


ID	NAME	ADDRESS	TELEPHONE	
1	Nalco	2410 State Highway 214	Office	Cell 806-893-1923
2	UPA Fertilizer	2412 State Highway 214	Office 806-592-9351	Cell 806-752-6087
3	Kinder-Morgan CO2 Metering Facility	Not Manned	Office	Cell 806-215-3973
4	Sheep Mountain CO2 Metering Facility	Not Manned	Office	Cell 806-215-1455
5	Bravo Pipeline Station	Not Manned	Office 806-592-6429	Cell 806-778-4079
6	Willard Unit Central Production Battery	Not Manned	Office 806-592-6407	Cell 432-634-8669
7	Willard CO2 Recovery Plant	Not Manned	Office 806-592-7379	Cell 806-215-0281
8	Nabors Service Company - Office	2450 State Highway 214	Office 806-592-2111 (24 hrs)	Cell 806-215-1387
9	Nabors Service Company - Shop	2450 State Highway 214	Office 806-592-2111 (24 hrs)	Cell 806-215-1387
10	Oxy Permian Ltd. (Open Storage Yards)	Not Manned	Office 806-592-6407	Cell 432-634-8669
11	House #2 (Unoccupied)	2484 State Highway 214		
12	House #1 (Occupied)	2486 State Highway 214	Home 806-592-3965	Cell 505-390-9301
13	Westex Well Service	2488 State Highway 214		Cell 806-215-6667
14	De La Rosa Diesel Service	2490 State Highway 214	Office 806-592-8505	Shop 806-592-8752
15	Reyes Mobile Home (Occupied)	1475 County Road 330		



— 24" WUCRP to BRURCF RETURN LINE
--- BRU to DUCRP (EXISTING)
--- BRU to WUCRP (EXISTING)
 Units
 Public Sites
ROE
 100ppm-3210'
 500ppm-1467'

T4 Permit Route Verification
 24" WUCRP To BRURCF Return Line
 Permit 05957
 Yoakum Co., Texas
 Map 1 of 1
 August 13, 2012

Occidental Permian Ltd.
 Prepared By: manzanita

RECEIVED
 RC OF TEXAS
 AUG 31 2012
 OILFIELD OPERATIONS
 AUSTIN, TX