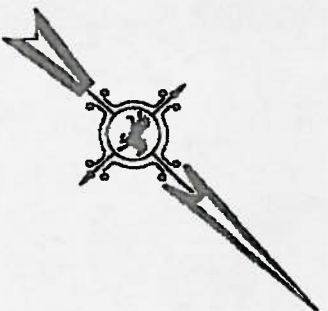


# LEE COUNTY, TEXAS

JOHN B. TAYLOR  
A-313

PROPOSED LOCATION  
W.O.S. OIL & GAS CORPORATION  
WOLZ No. 1-H  
SURFACE & PCN. POINT



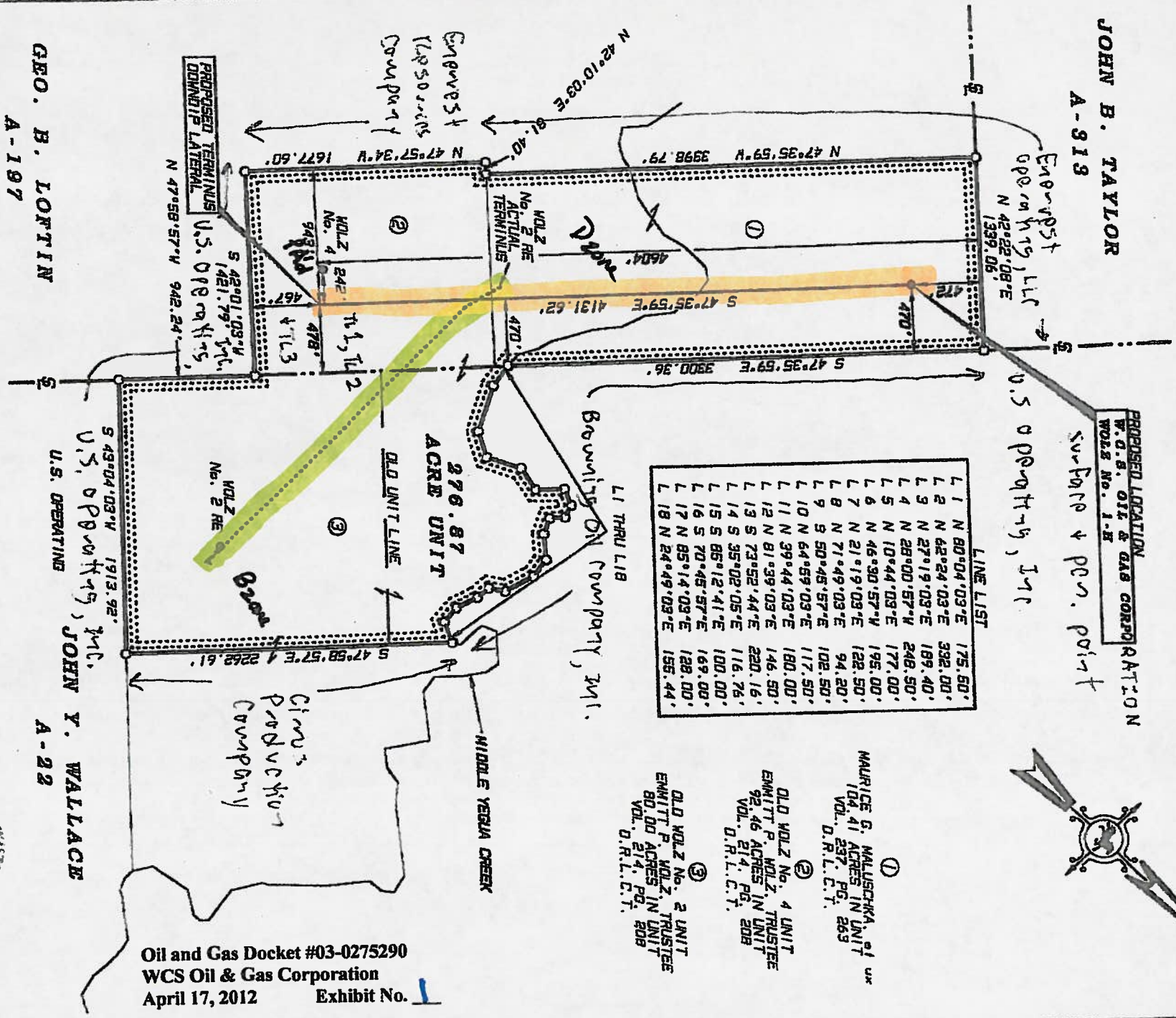
LINE LIST

L 1	N	80°04'03"E	175.50'
L 2	N	62°24'03"E	332.00'
L 3	N	27°19'03"E	189.40'
L 4	N	28°00'57"W	248.50'
L 5	N	10°44'03"E	177.00'
L 6	N	46°30'57"W	195.00'
L 7	N	21°19'03"E	128.50'
L 8	N	71°49'03"E	94.20'
L 9	S	50°46'57"E	102.50'
L 10	N	64°59'03"E	117.50'
L 11	N	39°44'03"E	180.00'
L 12	N	81°39'03"E	146.50'
L 13	S	73°52'44"E	230.16'
L 14	S	35°02'05"E	116.76'
L 15	S	85°12'41"E	100.00'
L 16	S	70°45'57"E	169.00'
L 17	N	85°14'03"E	188.00'
L 18	N	24°49'03"E	155.44'

① MAURICE G. MALLISCHKA, et ux  
104.41 ACRES IN UNIT  
VOL. 257, PG. 269  
D.R.L.C.T.

② OLD WOLZ No. 4 UNIT  
ENWITT P. WOLZ, TRUSTEE  
92.46 ACRES IN UNIT  
VOL. 214, PG. 208  
D.R.L.C.T.

③ OLD WOLZ No. 2 UNIT  
ENWITT P. WOLZ, TRUSTEE  
80.00 ACRES IN UNIT  
VOL. 214, PG. 208  
D.R.L.C.T.



Oil and Gas Docket #03-0275290  
WCS Oil & Gas Corporation  
April 17, 2012 Exhibit No. 1

GEO. B. LOTTIN  
A-197

U.S. OPERATING  
U.S. OPERATING, INC.  
JOHN Y. WALLACE  
A-22

NOTE: WELL IS LOCATED S 00°31' W, 2.95 MILES FROM DINE BDX, TEXAS.  
GROUND ELEVATION: 302 FEET  
WELL: WOLZ No. 1-H  
OPERATOR: W.C.S. OIL & GAS CORPORATION  
FEE: ENWITT P. WOLZ, TRUSTEE

SURFACE LOCATION  
LATITUDE LONGITUDE  
30°18'48.24" 96°49'26.29"

I, BOBBY J. MAY DO HEREBY CERTIFY THAT  
THE ABOVE PLAT CORRECTLY SHOWS THE WELL  
AS LOCATED ON THE GROUND JANUARY 17, 2012.

BOBBY J. MAY  
REGISTERED PROFESSIONAL LAND SURVEYOR  
No. 4217

**WOLZ**  
OIL & GAS CORPORATION

**MUSTANG ENGINEERING, INC.**  
317 E. HEMPSTEAD  
GIDDINGS, TEXAS  
PHONE: 979 542-1146  
FAX: 979 542-3353

**WOLZ No. 1-H  
276.87 ACRE UNIT**

DATE: JANUARY 25, 2012  
SCALE: 1" = 1000'

FIELD BOOK: 110, PAGE 05  
DRAWN BY: LPR

FILE: WOLZ No. 1-H R1  
DATE: MALISCHKA NAT

REVISED: 02/06/12 NW 5/4 THE