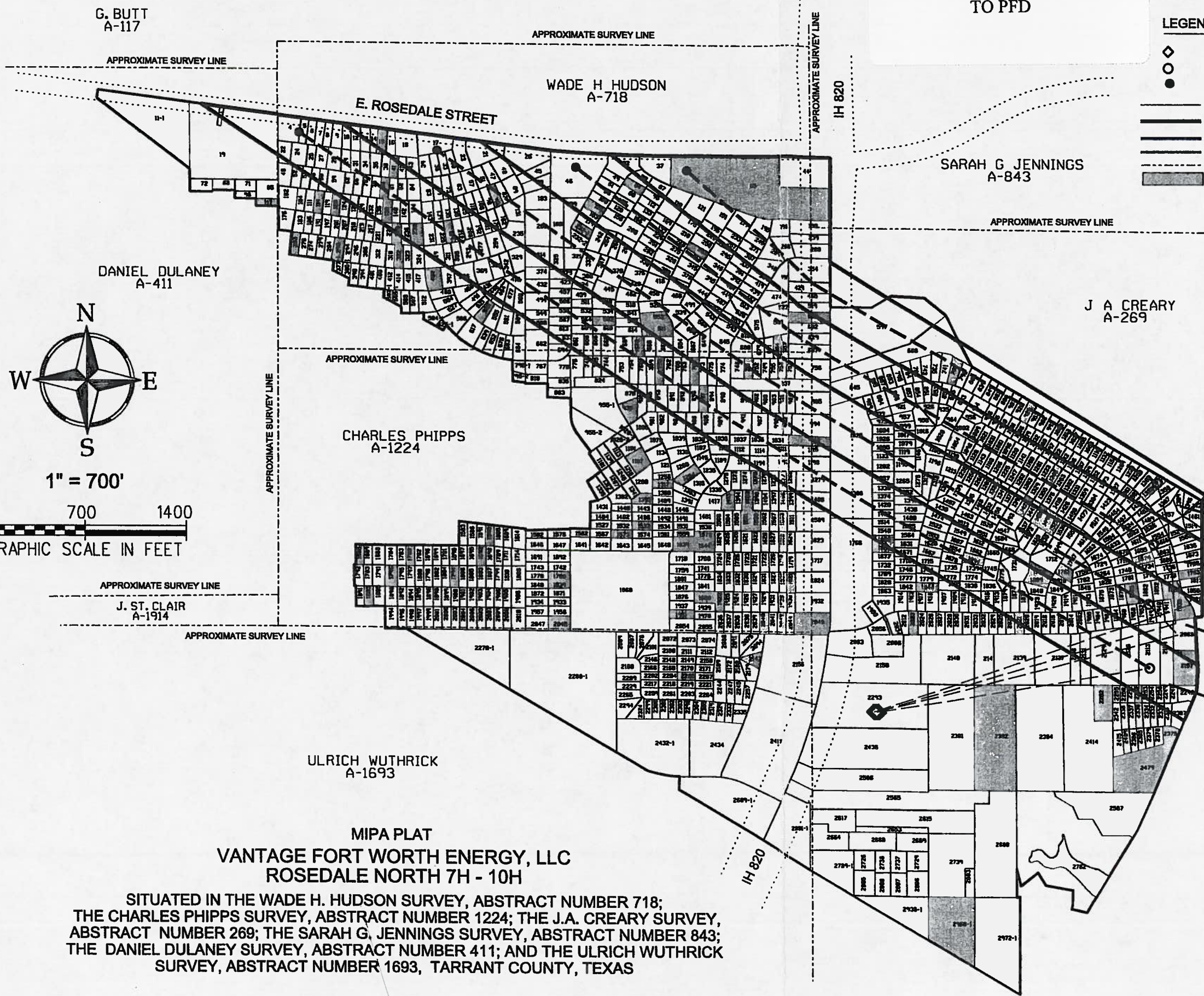


APPENDIX 1 TO PFD

- LEGEND**
- ◇ SURFACE HOLE LOCATION (SHL)
  - PENETRATION POINT (PP)
  - BOTTOM HOLE LOCATION (BHL)
  - PARCEL LINES
  - MIPA BOUNDARY
  - BORE PATH
  - UNIT BOUNDARY
  - - - SURVEY ABSTRACT LINE
  - UNLEASED



10H 42.870 ACRES  
 9H 47.943 ACRES  
 8H 57.065 ACRES  
 7H 66.402 ACRES

**MIPA PLAT**  
**VANTAGE FORT WORTH ENERGY, LLC**  
**ROSEDALE NORTH 7H - 10H**

SITUATED IN THE WADE H. HUDSON SURVEY, ABSTRACT NUMBER 718;  
 THE CHARLES PHIPPS SURVEY, ABSTRACT NUMBER 1224; THE J.A. CREARY SURVEY,  
 ABSTRACT NUMBER 269; THE SARAH G. JENNINGS SURVEY, ABSTRACT NUMBER 843;  
 THE DANIEL DULANEY SURVEY, ABSTRACT NUMBER 411; AND THE ULRICH WUTHRICK  
 SURVEY, ABSTRACT NUMBER 1693, TARRANT COUNTY, TEXAS

Exhibit No. 3  
 O&G Docket No. 09-0284751, 09-0284752, 09-0284753, & 09-0284754  
 Date: October 31, 2013  
 Vantage Fort Worth Energy LLC

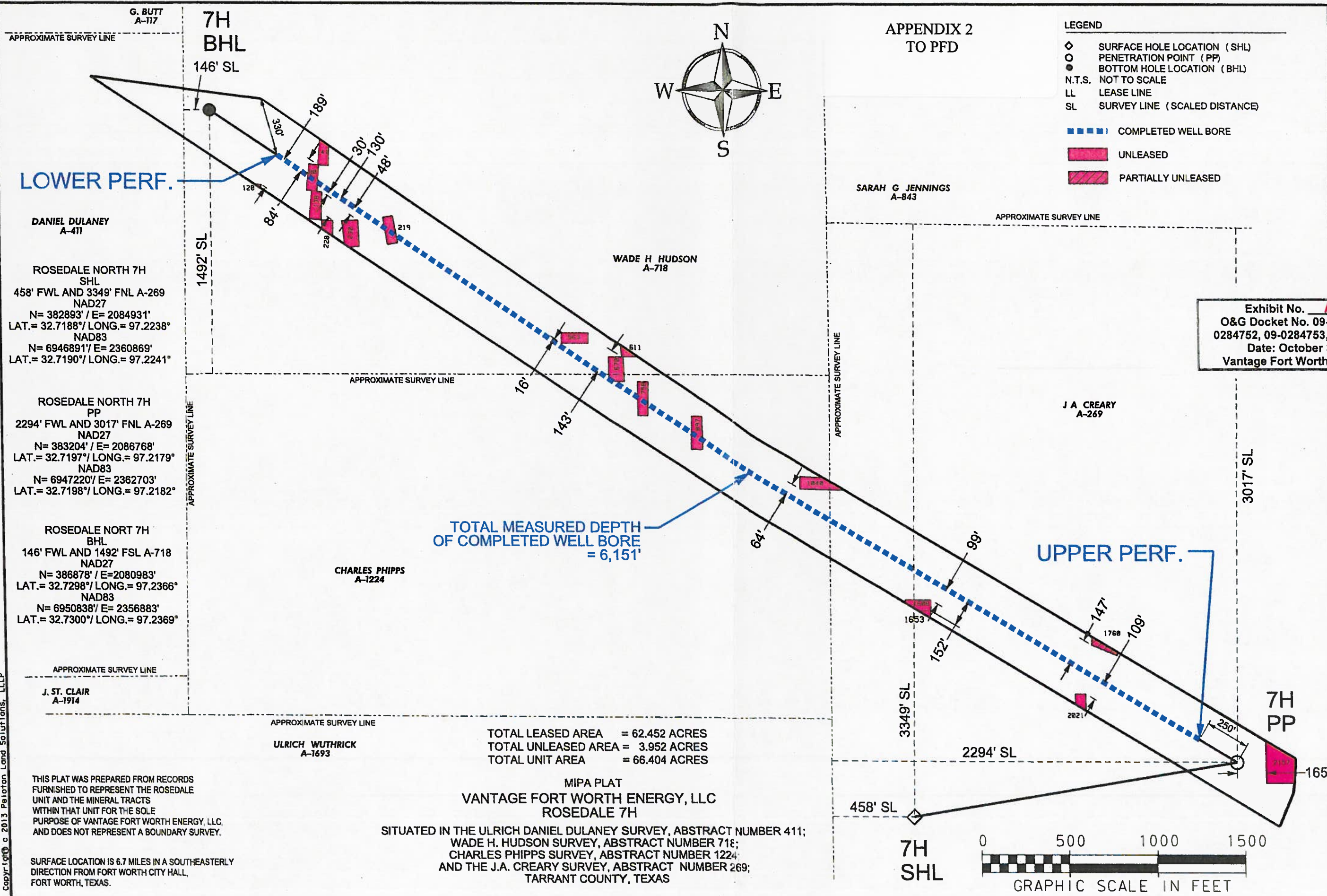
SURFACE LOCATION IS 6.7 MILES IN A SOUTHEASTERLY DIRECTION FROM FORT WORTH CITY HALL, FORT WORTH, TEXAS.

THIS PLAT WAS PREPARED FROM RECORDS FURNISHED TO REPRESENT THE ROSEDALE UNIT AND THE MINERAL TRACTS WITHIN THAT UNIT FOR THE SOLE PURPOSE OF VANTAGE FORT WORTH ENERGY, LLC, AND DOES NOT REPRESENT A BOUNDARY SURVEY.

JOB #:	VAN11003
DRAWN BY:	D.FREEMON
CHECKED BY:	C.GARLAND
DATE:	9-18-13
REVISIONS:	

**PELOTON**  
 LAND SOLUTIONS

5751 KROGER DR. STE. 186 | KELLER, TX 76244 | 817-562-3350  
 G:\JOB VAN11003-Rosedale\VAN11003.5 - 6108 Willard Rd\Sur\ARC\7H-10H\_MPL\_Base.dgn



LOWER PERF.

UPPER PERF.

TOTAL MEASURED DEPTH OF COMPLETED WELL BORE = 6,151'

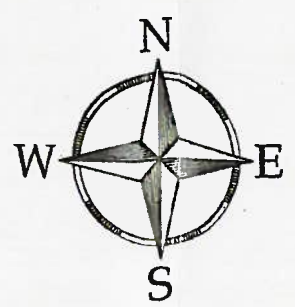
TOTAL LEASED AREA = 62.452 ACRES  
 TOTAL UNLEASED AREA = 3.952 ACRES  
 TOTAL UNIT AREA = 66.404 ACRES

MIPA PLAT  
 VANTAGE FORT WORTH ENERGY, LLC  
 ROSEDALE 7H

SITUATED IN THE ULRICH DANIEL DULANEY SURVEY, ABSTRACT NUMBER 411;  
 WADE H. HUDSON SURVEY, ABSTRACT NUMBER 71E;  
 CHARLES PHIPPS SURVEY, ABSTRACT NUMBER 1224  
 AND THE J.A. CREAMY SURVEY, ABSTRACT NUMBER 269;  
 TARRANT COUNTY, TEXAS

APPENDIX 2 TO PFD

- LEGEND
- ◇ SURFACE HOLE LOCATION (SHL)
  - PENETRATION POINT (PP)
  - BOTTOM HOLE LOCATION (BHL)
  - N.T.S. NOT TO SCALE
  - LL LEASE LINE
  - SL SURVEY LINE (SCALED DISTANCE)
- COMPLETED WELL BORE
  - UNLEASED
  - PARTIALLY UNLEASED



JOB #:	VAN11003
DRAWN BY:	C. GARLAND
CHECKED BY:	T. BRIDGES
DATE:	10-30-13
REVISIONS:	

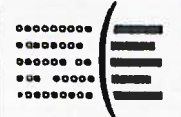
Exhibit No. 11A  
 O&G Docket No. 09-0284751, 09-0284752, 09-0284753, & 09-0284754  
 Date: October 31, 2013  
 Vantage Fort Worth Energy LLC

THIS PLAT WAS PREPARED FROM RECORDS FURNISHED TO REPRESENT THE ROSEDALE UNIT AND THE MINERAL TRACTS WITHIN THAT UNIT FOR THE SOLE PURPOSE OF VANTAGE FORT WORTH ENERGY, LLC, AND DOES NOT REPRESENT A BOUNDARY SURVEY.

SURFACE LOCATION IS 6.7 MILES IN A SOUTHEASTERLY DIRECTION FROM FORT WORTH CITY HALL, FORT WORTH, TEXAS.



**PELOTON**  
 LAND SOLUTIONS



G. BUTT  
A-117

APPROXIMATE SURVEY LINE

APPROXIMATE SURVEY LINE

DANIEL DULANEY  
A-471

ROSEDALE NORTH 8H  
SHL  
448' FWL AND 3349' FNL A-269  
NAD27  
N= 382893' / E= 2084921'  
LAT.= 32.7188° / LONG.= 97.2239°  
NAD83  
N= 6946891' / E= 2360859'  
LAT.= 32.7190° / LONG.= 97.2242°

ROSEDALE NORTH 8H  
PP  
2287' FWL AND 2576' FNL A-269  
NAD27  
N= 383645' / E= 2086762'  
LAT.= 32.7209° / LONG.= 97.2179°  
NAD83  
N= 6947660' / E= 2362692'  
LAT.= 32.7210° / LONG.= 97.2182°

ROSEDALE NORTH 8H  
BHL  
1083' FWL AND 739' FNL A-718  
NAD27  
N= 386760' / E= 2081919'  
LAT.= 32.7295° / LONG.= 97.2336°  
NAD83  
N= 6950729' / E= 2357820'  
LAT.= 32.7296° / LONG.= 97.2339°

APPROXIMATE SURVEY LINE

J. ST. CLAIR  
A-1914

APPROXIMATE SURVEY LINE

ULRICH WUTHRICK  
A-1693

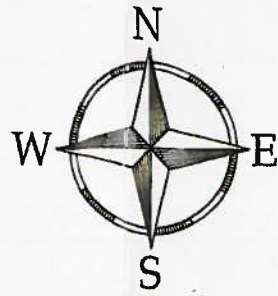
SURFACE LOCATION IS 6.7 MILES IN A SOUTHEASTERLY  
DIRECTION FROM FORT WORTH CITY HALL,  
FORT WORTH, TEXAS.

THIS PLAT WAS PREPARED FROM RECORDS  
FURNISHED TO REPRESENT THE ROSEDALE  
UNIT AND THE MINERAL TRACTS  
WITHIN THAT UNIT FOR THE SOLE  
PURPOSE OF VANTAGE FORT WORTH ENERGY, LLC,  
AND DOES NOT REPRESENT A BOUNDARY SURVEY.

MIPA PLAT  
VANTAGE FORT WORTH ENERGY, LLC  
ROSEDALE NORTH 8H  
SITUATED IN THE WADE H. HUDSON SURVEY, ABSTRACT NUMBER 718;  
CHARLES PHIPPS SURVEY, ABSTRACT NUMBER 1224;  
AND THE J.A. CREARY SURVEY, ABSTRACT NUMBER 269;  
TARRANT COUNTY, TEXAS

TOTAL LEASED AREA = 54.770 ACRES  
TOTAL UNLEASED AREA = 2.295 ACRES  
TOTAL UNIT AREA = 57.065 ACRES

WADE H HUDSON  
A-718



1" = 500'

APPENDIX 3  
TO PFD

SARAH G JENNINGS  
A-843

LEGEND

- ◇ SURFACE HOLE LOCATION (SHL)
- PENETRATION POINT (PP)
- BOTTOM HOLE LOCATION (BHL)
- N.T.S. NOT TO SCALE
- SL SURVEY LINE (SCALED DISTANCE)

- COMPLETED WELL BORE
- UNLEASED
- PARTIALLY UNLEASED

JOB #:	VAN1103	PAGE #:	9
DRAWN BY:	C. GARLAND	REVISIONS:	
CHECKED BY:	T. BRIDGES		
DATE:	10-30-13		

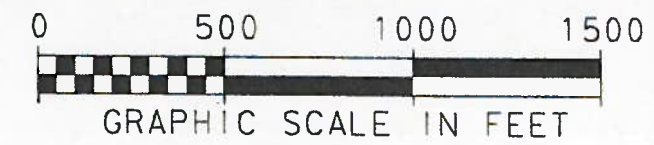
Exhibit No. 11B  
O&G Docket No. 09-0284751, 09-0284752, 09-0284753, & 09-0284754  
Date: October 31, 2013  
Vantage Fort Worth Energy LLC

J A CREARY  
A-269

UPPER PERF.

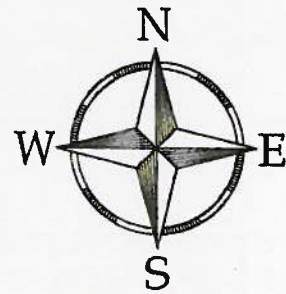
LOWER PERF.

TOTAL MEASURED DEPTH  
OF COMPLETED WELL BORE  
= 5,064'



PELTON  
LAND SOLUTIONS

5751 KROGER DR. STE. 185 | KELLER, TX 76244 | 817-562-3350



1" = 500'

APPENDIX 4  
TO PFD

LEGEND

- ◇ SURFACE HOLE LOCATION (SHL)
- PENETRATION POINT (PP)
- BOTTOM HOLE LOCATION (BHL)
- N.T.S. NOT TO SCALE
- SL SURVEY LINE (SCALED DISTANCE)

- ▬ COMPLETED WELL BORE
- UNLEASED
- ▨ PARTIALLY UNLEASED

ROSEDALE NORTH 9H  
SHL  
428' FWL AND 3349' FNL A-269  
NAD27  
N= 382893' / E= 2084901'  
LAT.= 32.7188° / LONG.= 97.2239°  
NAD83  
N= 6946891' / E= 2360839'  
LAT.= 32.7190° / LONG.= 97.2242°

ROSEDALE NORTH 9H  
PP  
2320' FWL AND 2158' FNL A-269  
NAD27  
N= 384082' / E= 2086798'  
LAT.= 32.7220° / LONG.= 97.2178°  
NAD83  
N= 6948078' / E= 2362724'  
LAT.= 32.7222° / LONG.= 97.2181°

ROSEDALE NORT 9H  
BHL  
1624' FEL AND 844' FNL A-718  
NAD27  
N= 386653' / E=2082858'  
LAT.= 32.7292° / LONG.= 97.2306°  
NAD83  
N= 6950631' / E= 2358760'  
LAT.= 32.7293° / LONG.= 97.2308°

CHARLES PHIPPS  
A-1224

ULRICH WUTHRICK  
A-1693

WADE H HUDSON  
A-718

SARAH G JENNINGS  
A-843

J A CREARY  
A-269

LOWER PERF.

TOTAL MEASURED DEPTH  
OF COMPLETED WELL BORE  
= 4,088'

UPPER PERF.

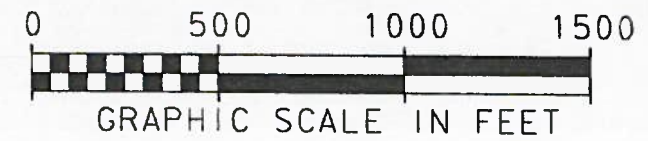
TOTAL LEASED AREA = 47.047 ACRES  
TOTAL UNLEASED AREA = 0.896 ACRES  
TOTAL UNIT AREA = 47.943 ACRES

Exhibit No. **11C**  
O&G Docket No. 09-0284751, 09-0284752, 09-0284753, & 09-0284754  
Date: October 31, 2013  
Vantage Fort Worth Energy LLC

MIPA PLAT  
VANTAGE FORT WORTH ENERGY, LLC  
ROSEDALE NORTH 9H  
SITUATED IN THE WADE H. HUDSON SURVEY, ABSTRACT NUMBER 718;  
CHARLES PHIPPS SURVEY, ABSTRACT NUMBER 1224;  
AND THE J.A. CREARY SURVEY, ABSTRACT NUMBER 269;  
TARRANT COUNTY, TEXAS

SURFACE LOCATION IS 6.7 MILES IN A SOUTHEASTERLY  
DIRECTION FROM FORT WORTH CITY HALL,  
FORT WORTH, TEXAS.

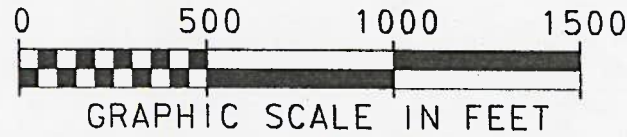
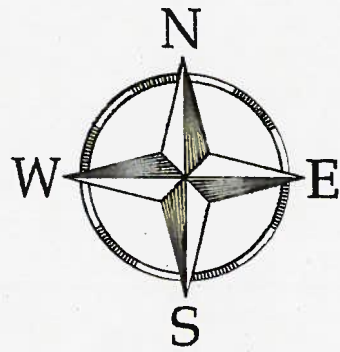
THIS PLAT WAS PREPARED FROM RECORDS  
FURNISHED TO REPRESENT THE ROSEDALE  
UNIT AND THE MINERAL TRACTS  
WITHIN THAT UNIT FOR THE SOLE  
PURPOSE OF VANTAGE FORT WORTH ENERGY, LLC,  
AND DOES NOT REPRESENT A BOUNDARY SURVEY.



JOB #:	VAN11003	PAGE #:	9
DRAWN BY:	C. GARLAND	DATE:	10-30-13
CHECKED BY:	T. BRIDGES	REVISIONS:	

**PELTON**  
LAND SOLUTIONS

5751 KROGER DR., STE. 185 | KELLER, TX 76244 | 817-562-3350



APPENDIX 5  
TO PFD

LEGEND

- ◇ SURFACE HOLE LOCATION (SHL)
- PENETRATION POINT (PP)
- BOTTOM HOLE LOCATION (BHL)
- N.T.S. NOT TO SCALE
- SL SURVEY LINE (SCALED DISTANCE)

- COMPLETED WELL BORE
- UNLEASED

JOB #:	VAN11003	PAGE #:	8
DRAWN BY:	C. GARLAND	DATE:	10-29-13
CHECKED BY:	T. BRIDGES	REVISIONS:	

Exhibit No. 11D  
 O&G Docket No. 09-0284751, 09-0284752, 09-0284753, & 09-0284754  
 Date: October 31, 2013  
 Vantage Fort Worth Energy LLC

ROSEDALE NORTH 10H  
 SHL  
 428' FWL AND 3349' FNL A-269  
 NAD27  
 N= 382893' / E= 2084901'  
 LAT.= 32.7188° / LONG.= 97.2239°  
 NAD83  
 N= 6946891' / E= 2360849'  
 LAT.= 32.7190° / LONG.= 97.2242°

ROSEDALE NORTH 10H  
 PP  
 2342' FWL AND 21735' FNL A-269  
 NAD27  
 N= 384485' / E= 2086822'  
 LAT.= 32.7232° / LONG.= 97.2177°  
 NAD83  
 N= 6948501' / E= 2362744'  
 LAT.= 32.7233° / LONG.= 97.2180°

ROSEDALE NORT 10H  
 BHL  
 838' FEL AND 826' FSL A-718  
 NAD27  
 N= 386633' / E=2083607'  
 LAT.= 32.7291° / LONG.= 97.2281°  
 NAD83  
 N= 6950618' / E= 2359509'  
 LAT.= 32.7293° / LONG.= 97.2284°

TOTAL LEASED AREA = 42.380 ACRES  
 TOTAL UNLEASED AREA = 0.490 ACRES  
 TOTAL UNIT AREA = 42.870 ACRES

MIPA PLAT  
 VANTAGE FORT WORTH ENERGY, LLC  
 ROSEDALE NORTH 10H

SITUATED IN THE WADE H. HUDSON SURVEY, ABSTRACT NUMBER 718;  
 CHARLES PHIPPS SURVEY, ABSTRACT NUMBER 1224;  
 AND THE J.A. CREARY SURVEY, ABSTRACT NUMBER 269;  
 TARRANT COUNTY, TEXAS

SURFACE LOCATION IS 6.7 MILES IN A SOUTHEASTERLY DIRECTION FROM FORT WORTH CITY HALL, FORT WORTH, TEXAS.

THIS PLAT WAS PREPARED FROM RECORDS FURNISHED TO REPRESENT THE ROSEDALE UNIT AND THE MINERAL TRACTS WITHIN THAT UNIT FOR THE SOLE PURPOSE OF VANTAGE FORT WORTH ENERGY, LLC, AND DOES NOT REPRESENT A BOUNDARY SURVEY.

**PELTON**  
 LAND SOLUTIONS

5751 KROGER DR. STE. 185 | KELLER, TX 76244 | 817-562-3350

LOWER PERF.

TOTAL MEASURED DEPTH OF COMPLETED WELL BORE = 3,277'

UPPER PERF.

