

E. RATHBURN
F. RATHBURN
No. S553035

W. LIVINGSTON
F. LIVINGSTON
No. N698539

down
ion

N 02°37'42" W 1848.67'

SECTION 16

SECTION 5

SECTION 2

SECTION 6

SECTION 6

SECTION 4

SECTION 4

SECTION 3

SECTION 4

SECTION 4

SECTION 3

S 02°57'58" E 2854.05'

EXISTING LAKE

DARKWAY ALIGNMENT

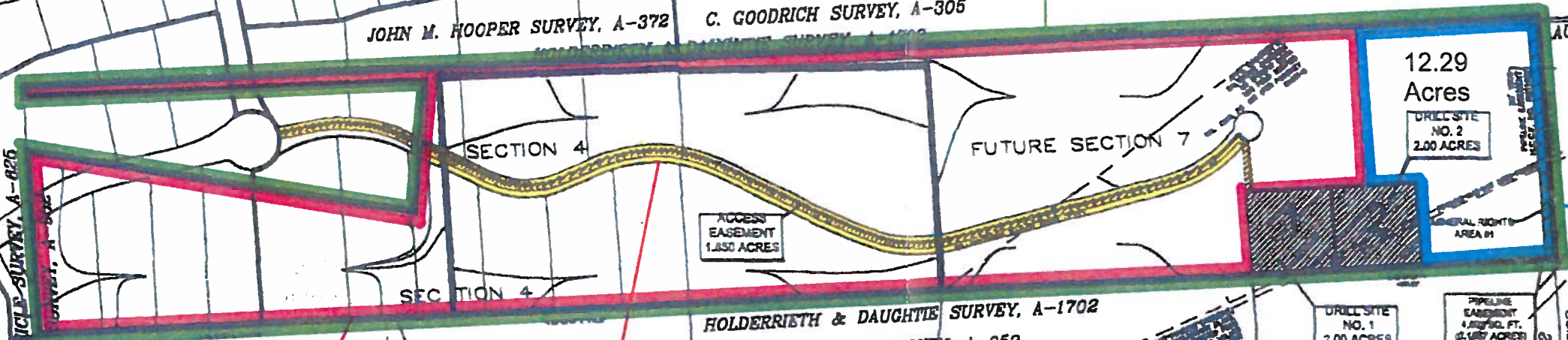
606 acres
Merenco Realty, Inc.
H.C.C.F. No. T693301
Restricted against
residential uses

1" = 500'

Exhibit II

VARIANCE PREVIOUSLY
GRANTED FROM 42-127
AND 42-128 (2013-0274)

Proposed Rule 76 Subdivision - 92.29 Acres



80 Acres for
Drill Site # 1

Access Easement

12.29 Acres for
Drill Site # 2

12.29
Acres
DRILL SITE
NO. 2
2.00 ACRES

DRILL SITE
NO. 1
2.00 ACRES

PIPELINE
EASEMENT
4,197 SQ. FT.
(0.095 ACRES)

Boudreaux Estates, Section One
(Unrecorded)