

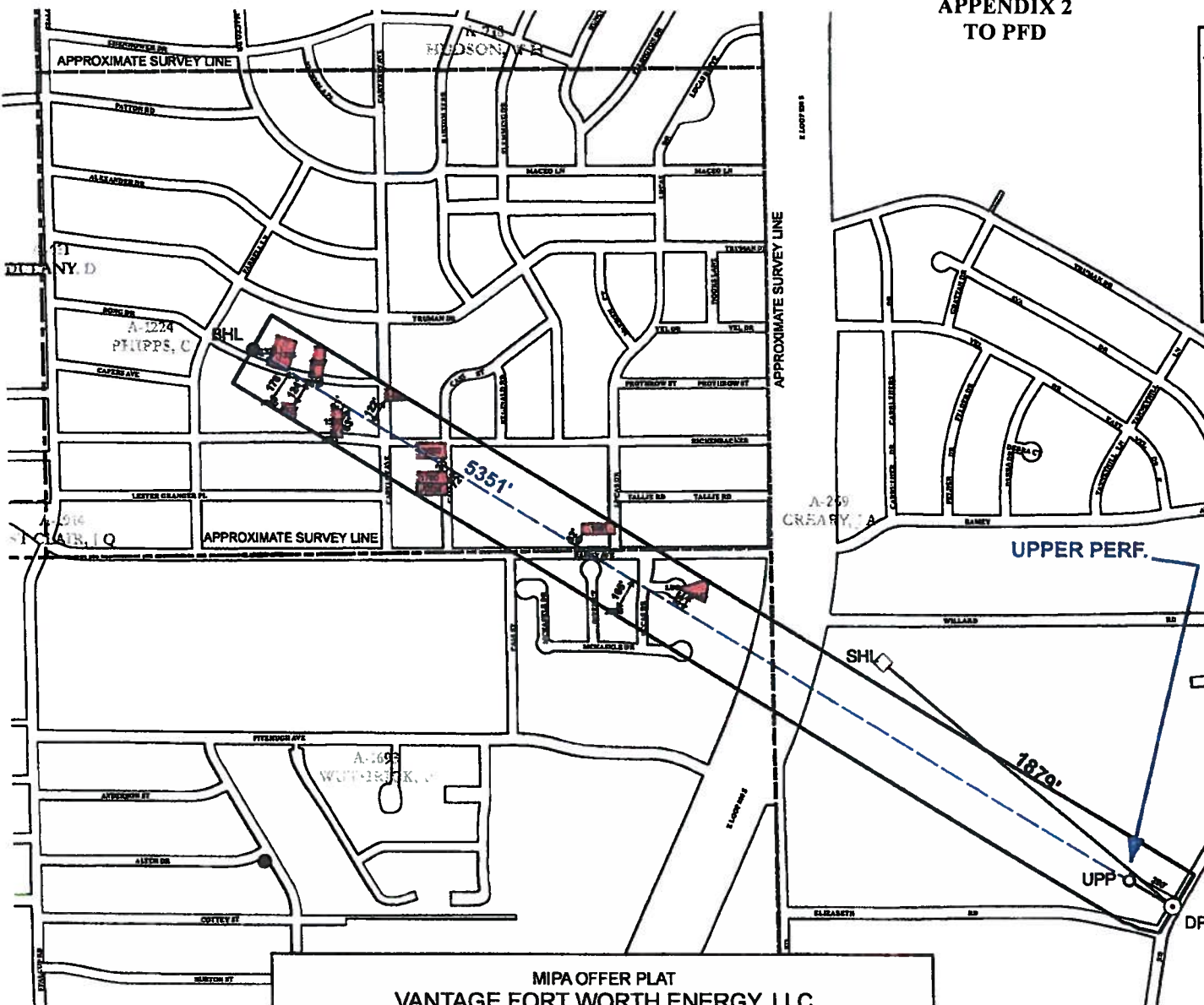
APPENDIX 2
TO PFD

Legend

- PROPOSED BOTTOM HOLE LOCATION (BHL)
- PROPOSED DEFLECTION POINT (DP)
- ◇ PROPOSED SURFACE HOLE LOCATION (SHL)
- UPPER PROPOSED PENETRATION POINT (UPP)
- KICK
- LATERAL
- MIPA BOUNDARIES
- SURVEY LINE
- UNLEASED
- ▨ PARTIAL LEASE

Rosedale North 3H

Tract #	Distance Wellbore Traversed
1321	Traversed
1333	Traversed
1367	55'
1483	122'
1565	176'
1577	124'
1595	21'
1692	Traversed
1693	163'
1780	20'
1839	72'
1961	62'
2143	85'
2206	165'



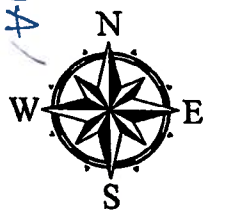
ROSEDALE NORTH 3H
BHL
NAD83
N=6948434.17079/E=2357776.41838
LAT. =32.723319°LONG. =-97.234127°

ROSEDALE NORTH 3H
UPP
NAD83
N=6945794.15748/E=2362140.88256
LAT. =32.715917°LONG. =-97.220041°

ROSEDALE NORTH 3H
POP
NAD83
N=6945666.82849/E=2362356.02747
LAT. =32.71556°LONG. =-97.219346°

ROSEDALE NORTH 3H
SHL
NAD83
N=6946880.3604/E=2360922.06046
LAT. =32.718943°LONG. =-97.22396°

Exhibit No. 114
O & G Dkt. Nos. 09-0288329, 09-0288331, 09-0288332, 09-0288333
Date: June 5, 2014
Vantage Fort Worth Energy LLC



1 inch = 750 feet

MIPA OFFER PLAT
VANTAGE FORT WORTH ENERGY, LLC
ROSEDALE NORTH 3H

SITUATED IN THE U. WUTHRICK SURVEY, ABSTRACT NUMBER 1693;
CHARLES PHIPPS SURVEY, ABSTRACT NUMBER 1224;
AND THE J.A. CREARY SURVEY, ABSTRACT NUMBER 269;
TARRANT COUNTY, TEXAS

TOTAL UNIT AREA = 47.86

SURFACE LOCATION IS 6.7 MILES IN A SOUTHEASTERLY DIRECTION FROM FORT WORTH CITY HALL, FORT WORTH, TEXAS.

THIS PLAT WAS PREPARED FROM RECORDS FURNISHED TO REPRESENT THE ROSEDALE UNIT AND THE MINERAL TRACTS WITHIN THAT UNIT FOR THE SOLE PURPOSE OF VANTAGE FORT WORTH ENERGY, LLC, AND DOES NOT REPRESENT A BOUNDARY SURVEY

APPENDIX 3
TO PFD

Legend

- PROPOSED BOTTOM HOLE LOCATION (BHL)
- PROPOSED DEFLECTION POINT (DP)
- ◇ PROPOSED SURFACE HOLE LOCATION (SHL)
- UPPER PROPOSED PENETRATION POINT (UPP)
- KICK
- - - LATERAL
- ▭ MIPA BOUNDARIES
- - - SURVEY LINE
- UNLEASED
- ▨ PARTIAL LEASED

ROSEDALE NORTH 4H
BHL
NAD83
N=6948774.4498/E=2357973.28785
LAT. =32.724247°LONG. =-97.233474°

ROSEDALE NORTH 4H
UPP
NAD83
N=6946119.2778/E=2362332.84091
LAT. =32.716804°LONG. =-97.219404°

ROSEDALE NORTH 4H
POP
NAD83
N=6945994.75243/E=2362550.94779
LAT. =32.716455°LONG. =-97.218699°

ROSEDALE NORTH 4H
SHL
NAD83
N=6948880.4719/E=2360933.75996
LAT. =32.718943°LONG. =-97.223922°

Rosedale North 4H Tract #	Distance Wellbore
1880	Traversed
2045	131'
1928	111'
2036	20'
1367	196'
2143	182'
1533	60'
1573	Traversed
2040	Traversed
1483	136'
1922	Traversed
1961	Traversed
2045	44'
1644	158'
1639	74'

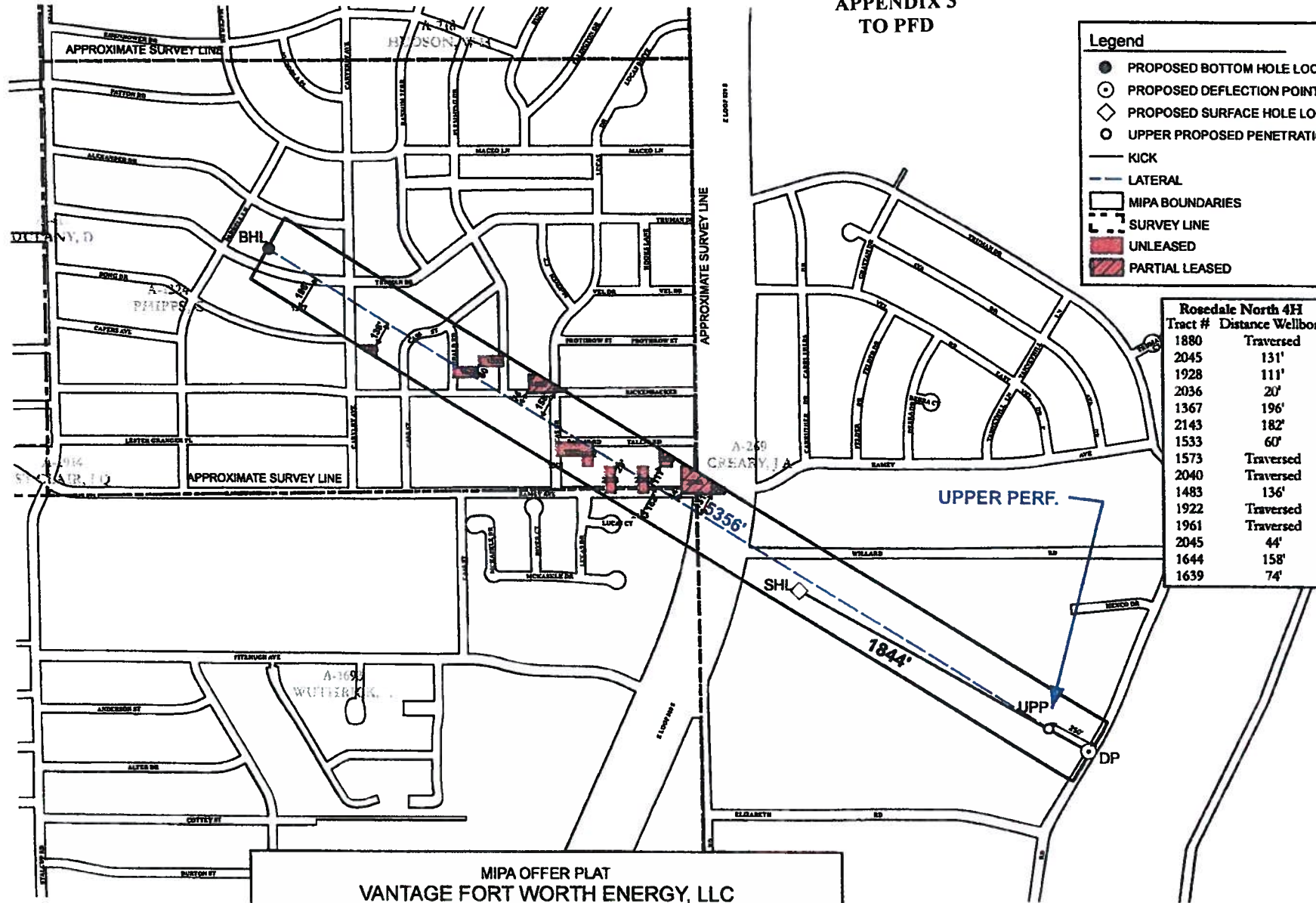
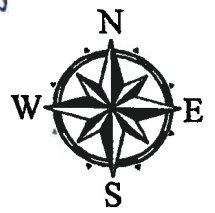


Exhibit No. HR
O & G Dkt. Nos. 09-0288329, 09-0288331, 09-0288332, 09-0288333
Date: June 5, 2014
Vantage Fort Worth Energy LLC



1 inch = 750 feet

TOTAL UNIT AREA = 47.44

MIPA OFFER PLAT
VANTAGE FORT WORTH ENERGY, LLC
ROSEDALE NORTH 4H
SITUATED IN THE U. WUTHRICK SURVEY, ABSTRACT NUMBER 1693;
CHARLES PHIPPS SURVEY, ABSTRACT NUMBER 1224;
AND THE J.A. CREARY SURVEY, ABSTRACT NUMBER 269;
TARRANT COUNTY, TEXAS

SURFACE LOCATION IS 6.7 MILES IN A SOUTHEASTERLY DIRECTION FROM FORT WORTH CITY HALL, FORT WORTH, TEXAS.

THIS PLAT WAS PREPARED FROM RECORDS FURNISHED TO REPRESENT THE ROSEDALE UNIT AND THE MINERAL TRACTS WITHIN THAT UNIT FOR THE SOLE PURPOSE OF VANTAGE FORT WORTH ENERGY, LLC, AND DOES NOT REPRESENT A BOUNDARY SURVEY.



DRAWN BY: WJAMES DATE: 06-04-2014

APPENDIX 4
TO PFD

Legend

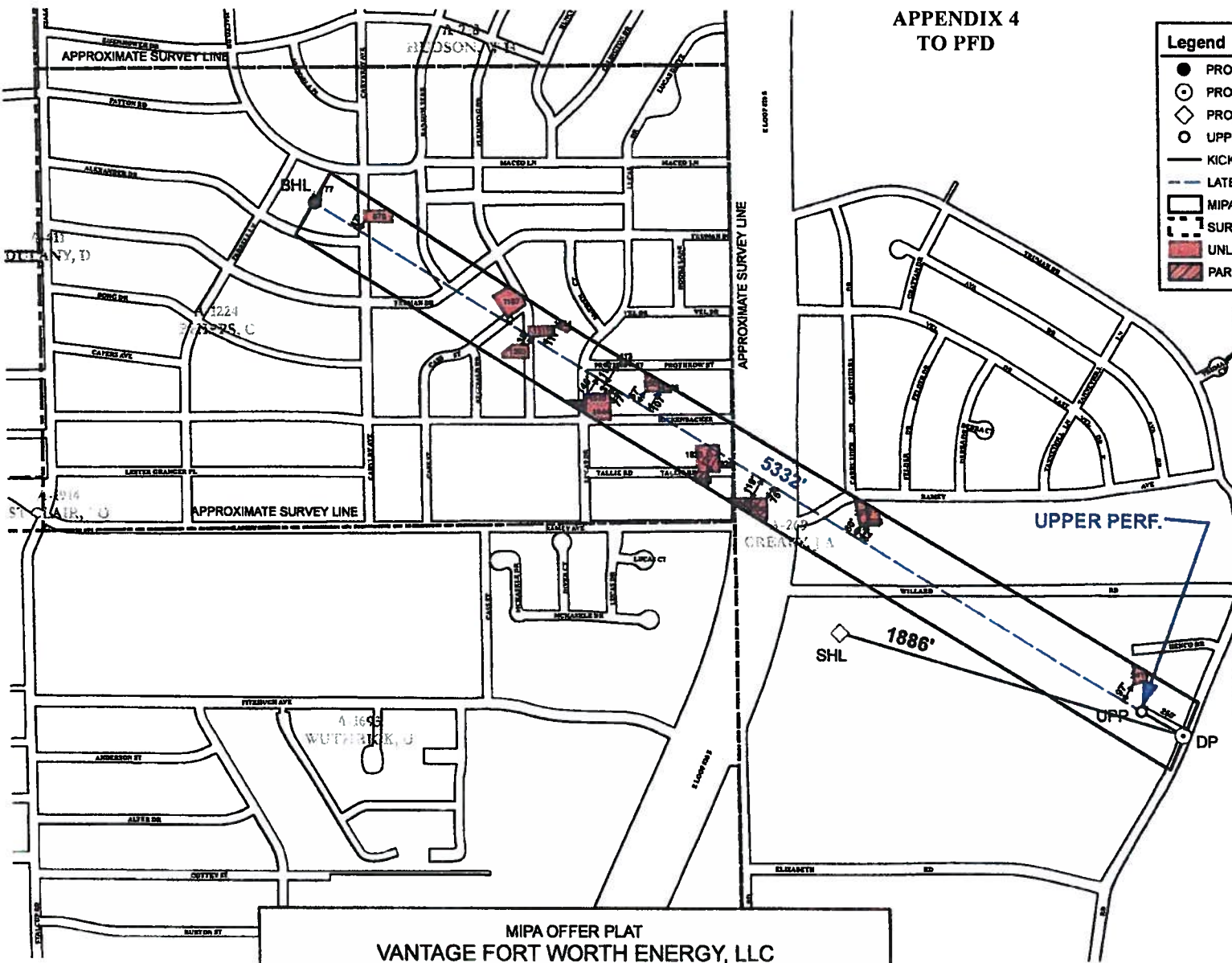
- PROPOSED BOTTOM HOLE LOCATION (BHL)
- PROPOSED DEFLECTION POINT (DP)
- ◇ PROPOSED SURFACE HOLE LOCATION (SHL)
- UPPER PROPOSED PENETRATION POINT (UPP)
- KICK
- - - LATERAL
- ▭ MIPA BOUNDARIES
- - - SURVEY LINE
- UNLEASED
- ▨ PARTIAL LEASE

ROSEDALE NORTH 5H
BHL
NAD83
N=6949095.68905/E=2358198.77964
LAT. =32.725123°LONG. =-97.232728°

ROSEDALE NORTH 5H
UPP
NAD83
N=6946463.44457/E=2362503.9894
LAT. =32.717745°LONG. =-97.218833°

ROSEDALE NORTH 5H
POP
NAD83
N=6946339.77349/E=2362721.25759
LAT. =32.717397°LONG. =-97.218132°

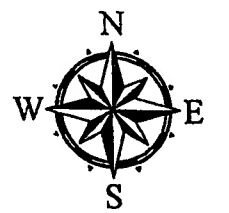
ROSEDALE NORTH 5H
SHL
NAD83
N=6946868.54917/E=2360910.47248
LAT. =32.718911°LONG. =-97.223998°



Rosedale 5H

Tract #	Distance	Wellbore
876	47'	
777	52'	
2415	97'	
2045	119'	
2045	75'	
2023	82'	
2012	60'	
1928	120'	
1826	Traversed	
1644	77'	
1639	140'	
1578	31'	
1506	107'	
1501	67'	
1413	117'	
1393	38'	
1317	Traversed	
1254	111'	
1187	17'	
1825	Traversed	

Exhibit No. 17
O & G Dkt. Nos. 09-0288329, 09-0288331, 09-0288332, 09-0288333
Date: June 5, 2014
Vantage Fort Worth Energy LLC



1 inch = 750 feet

MIPA OFFER PLAT
VANTAGE FORT WORTH ENERGY, LLC
ROSEDALE NORTH 5H

SITUATED IN THE ULRICH DANIEL DULANEY SURVEY, ABSTRACT NUMBER 411;
CHARLES PHIPPS SURVEY, ABSTRACT NUMBER 1224;
AND THE J.A. CREARY SURVEY, ABSTRACT NUMBER 269;
TARRANT COUNTY, TEXAS

TOTAL UNIT AREA = 44.72

SURFACE LOCATION IS 6.7 MILES IN A SOUTHEASTERLY DIRECTION FROM FORT WORTH CITY HALL, FORT WORTH, TEXAS

THIS PLAT WAS PREPARED FROM RECORDS FURNISHED TO REPRESENT THE ROSEDALE UNIT AND THE MINERAL TRACTS WITHIN THAT UNIT FOR THE SOLE PURPOSE OF VANTAGE FORT WORTH ENERGY, LLC, AND DOES NOT REPRESENT A BOUNDARY SURVEY

DRAWN BY: WJAMES DATE: 06-04-2014

VANTAGE ENERGY

APPENDIX 5
TO PFD

Legend

- PROPOSED BOTTOM HOLE LOCATION (BHL)
- PROPOSED DEFLECTION POINT (DP)
- ◇ PROPOSED SURFACE HOLE LOCATION (SHL)
- UPPER PROPOSED PENETRATION POINT (UPP)
- KICK
- - - LATERAL
- MIPA BOUNDARIES
- - - SURVEY LINE
- UNLEASED
- PARTIAL LEASE

ROSEDALE NORTH 6H
BHL
NAD83
N=6951054.0358/E=2355876.38694
LAT. =32.730582°LONG. =-97.240203°

ROSEDALE NORTH 6H
UPP
NAD83
N=6946839.44931/E=2362608.91545
LAT. =32.718774°LONG. =-97.218477°

ROSEDALE NORTH6H
POP
NAD83
N=6946895.04743/E=2362865.48242
LAT. =32.718369°LONG. =-97.217649°

ROSEDALE NORTH6H
SHL
NAD83
N=6946833.67166/E=2360934.2054
LAT. =32.718815°LONG. =-97.223923°

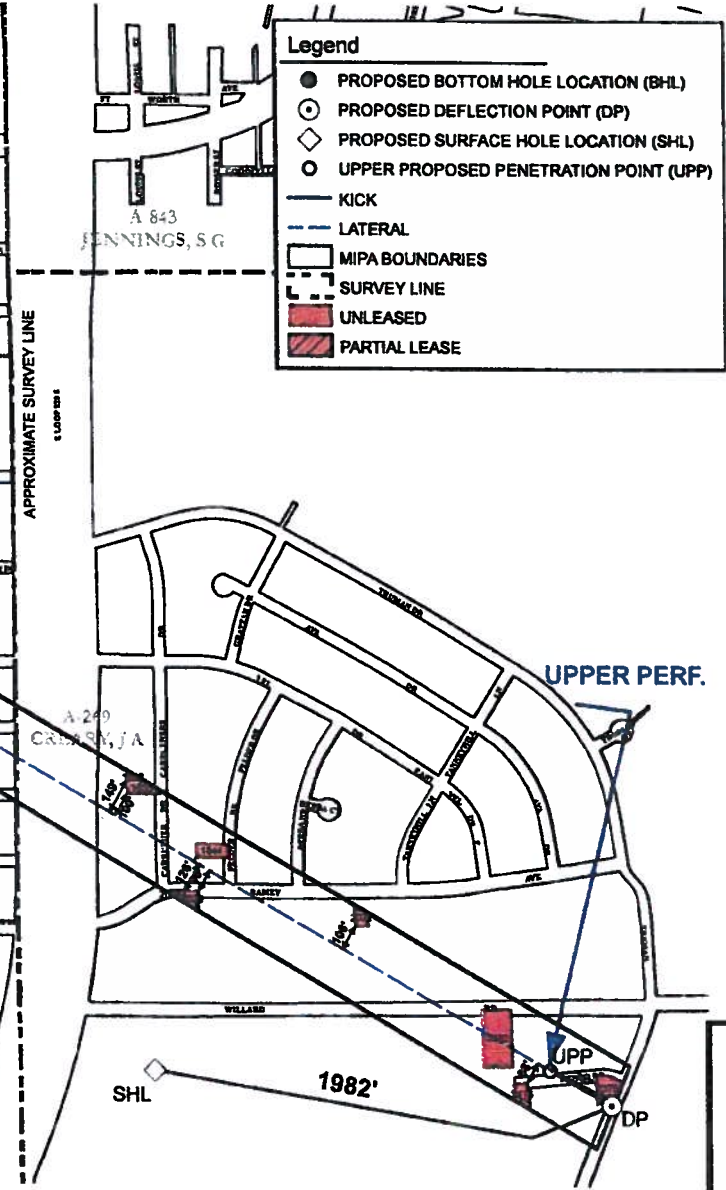
Rosedale North 6H

Tract #	Distance Wellbore
981	Traversed
930	Traversed
876	160'
777	157'
538	Traversed
507	78'
504	Traversed
409	Traversed
322	Traversed
290	Traversed
279	118'
2415	88'
2375	Traversed
230	158'
2282	Traversed
228	87'
2023	96'
2021	106'
2012	126'
1844	16'
176	87'
1653	100'
1608	149'
1506	58'
1501	89'
1413	28'
1404	Traversed
1400	Traversed
1270	31'
127	75'
1254	13'
120	20'
1187	124'
117	86'
114	Traversed
1107	7'
1101	86'
1039	Traversed
1036	152'
566	47'
124	2'

TOTAL UNIT AREA = 69.18

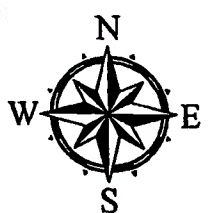
MIPA OFFER PLAT
VANTAGE FORT WORTH ENERGY, LLC
ROSEDALE NORTH 6H

SITUATED IN THE ULRICH DANIEL DULANEY SURVEY, ABSTRACT NUMBER 411;
WADE H. HUDSON SURVEY, ABSTRACT NUMBER 718;
CHARLES PHIPPS SURVEY, ABSTRACT NUMBER 1224;
AND THE J.A. CREARY SURVEY, ABSTRACT NUMBER 269;
TARRANT COUNTY, TEXAS



THIS PLAT WAS PREPARED FROM RECORDS FURNISHED TO REPRESENT THE ROSEDALE UNIT AND THE MINERAL TRACTS WITHIN THAT UNIT FOR THE SOLE PURPOSE OF VANTAGE FOR WORTH ENERGY, LLC, AND DOES NOT REPRESENT A BOUNDARY SURVEY

Exhibit No. 111
O & G Dkt. Nos. 09-0288329, 09-0288331, 09-0288332, 09-0288333
Date: June 5, 2014
Vantage Fort Worth Energy LLC



1 inch = 750 feet

SURFACE LOCATION IS 6.7 MILES IN A SOUTHEASTERLY DIRECTION FROM FORT WORTH CITY HALL, FORT WORTH, TEXAS.

DRAWN BY: WJAMES DATE: 06-04-2014

