

1 inch = 750 Feet



0 375 750 Feet

Total Unit Acres: 96,901

VANTAGE FORT WORTH ENERGY, LLC  
ROSEDALE SOUTH WEST 2H

SITUATED IN THE D. DULANY, ABSTRACT 411; J.A. CREARY, ABSTRACT 269; J.Q. ST. CLAIR, ABSTRACT 1914; U. WUTHRICK, ABSTRACT 1693; G.J. ASHABRANNER, ABSTRACT 7 TARRANT COUNTY, TEXAS

APPENDIX 1

Legend	
●	PROPOSED BOTTOM HOLE LOCATION (BHL)
○	FIRST PERFORATION POINT
◇	PROPOSED SURFACE HOLE LOCATION (SHL)
—	KICK
- - -	LATERAL
▬	MIRA UNIT BOUNDARY
▨	UNLEASED
▩	PARTIAL LEASE

ROSEDALE SOUTH WEST 2H	Tract #	Distance Wellbore	
1540			
1541*	Traversed		
1606	Traversed		
1637	Traversed		
1638	Traversed		
1668	Traversed		
1676	Traversed		
1846	Traversed		
1962	Traversed		
1967	Traversed		
1974	Traversed		
1975	Traversed		
2057	Traversed		
2068	Traversed		
2081	Traversed		
2100	Traversed		
2105	Traversed		
2116	Traversed		
2120	Traversed		
2123	Traversed		
2134	Traversed		
2142	Traversed		
2164	Traversed		
2195*	Traversed		
2196*	Traversed		
2220	Traversed		
2222	Traversed		
2277*	Traversed		
2287	Traversed		
2288	Traversed		
2306	Traversed		
2334	Traversed		
2489	Traversed		
2491	Traversed		
2492	Traversed		
2495	Traversed		
2559	Traversed		
2610	Traversed		
2624	Traversed		
2674	Traversed		
3239.2	Traversed		
3318	Traversed		

\*Partial Lease

**Rosedale South West 2H MIPA Unit Description**

**BEING** a 96.899 acre tract of land situated in the J. Creary Survey, Abstract Number 269, the U. Wuthrick Survey, Abstract Number 1693, the G.J. Ashabranner Survey, Abstract Number 7, the J.Q. St. Clair Survey Abstract Number 411 and the D. Dulany Survey, Abstract Number 411, Tarrant County, Texas and being more particularly described by metes and bounds as follows:

**BEGINNING** at the southeast corner of Lot 7, Block 3, Handley Heights South Addition, an addition to the City of Fort Worth recorded in Volume 388-D, Page 199, Plat Records, Tarrant County, Texas:

**THENCE** N 89°37'39"E, 199.85 feet;

**THENCE** S 56°17'13"E, 126.42 feet;

**THENCE** S 04°49'56"W, 328.12 feet;

**THENCE** N 60°49'57"W, 531.51 feet;

**THENCE** N 60°46'58"W, 804.91 feet;

**THENCE** N 64°26'45"W, 1498.80 feet;

**THENCE** N 63°24'52"W, 2371.96 feet;

**THENCE** N 62°58'41"W, 725.05 feet;

**THENCE** N 66°58'24"W, 1163.87 feet;

**THENCE** N 66°51'16"W, 1510.68 feet;

**THENCE** N 65°23'54"W, 751.30 feet;

**THENCE** N 00°34'18"W, 45.94 feet;

**THENCE** N 89°58'11"E, 6.80 feet;

**THENCE** N 00°23'18"W, 282.22 feet;

**THENCE** N 01°04'17"W, 143.28 feet;

**THENCE** N 89°24'44"E, 19.99 feet;

**THENCE** N 01°17'31"W, 131.89 feet;

APPENDIX 1A

THENCE S 64°44'03"E, 974.89 feet;

THENCE S 64°56'05"E, 1521.00 feet;

THENCE S 65°31'30"E, 1155.08 feet;

THENCE S 64°42'21"E, 425.16 feet;

THENCE S 59°00'52"E, 337.12 feet;

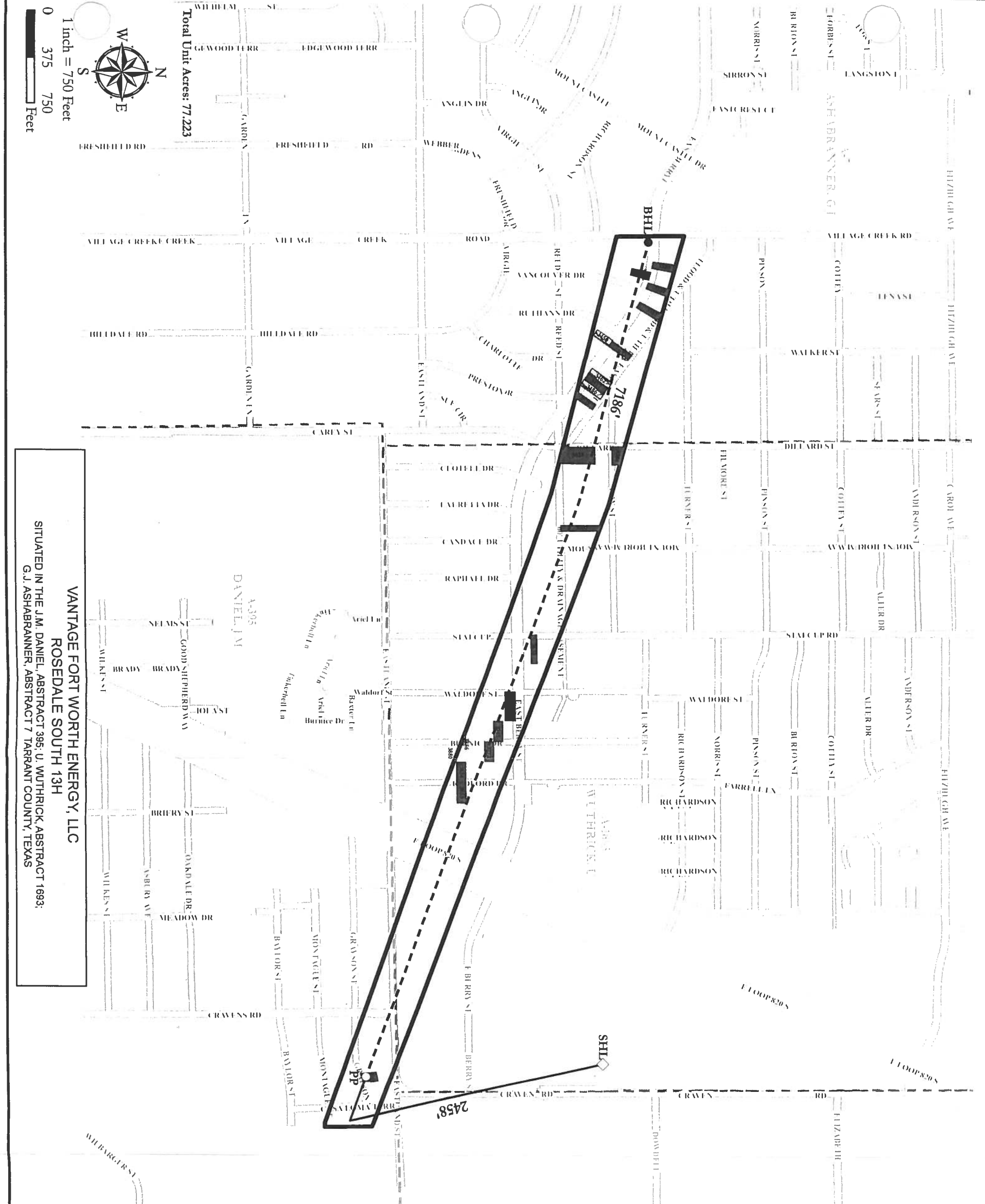
THENCE S 62°26'09"E, 2349.86 feet;

THENCE S 63°34'22"E, 1501.44 feet;

THENCE S 56°40'29"E, 845.36 feet;

THENCE S 56°17'12"E, 16.90 feet;

THENCE S 00°22'21"E, 135.23 feet, to the **POINT OF BEGINNING** and containing 4220920 square feet or 96.899 acres of land more or less.



1 inch = 750 Feet  
 0 375 750  
 Feet



Total Unit Acres: 77.223

**VANTAGE FORT WORTH ENERGY, LLC**  
**ROSEDALE SOUTH 13H**  
 SITUATED IN THE J.M. DANIEL, ABSTRACT 395; U. WUTHRICK, ABSTRACT 1693;  
 G.J. ASHABRANNER, ABSTRACT 7 TARRANT COUNTY, TEXAS

**Legend**

- PROPOSED BOTTOM HOLE LOCATION (BHL)
- FIRST PERFORATION POINT
- ◇ PROPOSED SURFACE HOLE LOCATION (SHL)
- KICK
- - - LATERAL
- ▭ MIPA UNIT BOUNDARY
- ▭ Unleased
- ▨ Partial Lease

ROSEDALE SOUTH 13H	Tract #	Distance Wellbore	
	3320	73'	
	3328	75'	
	3351	40'	
	3362	Traversed	
	3384	136'	
	3422	Traversed	
	3450*	74'	
	3462*	Traversed	
	3477	11'	
	3486*	29'	
	3507	Traversed	
	3519	68'	
	3525	Traversed	
	3638	0'	
	3706	Traversed	
	3745	Traversed	
	3772	Traversed	
	3853	1'	
	3854	62'	
	3856*	183'	
	3880	192'	
	4061	Traversed	

\*Partial Lease

APPENDIX 2



**Rosedale South 13 MIPA Unit Description**

**BEING** a 77.223 acre tract of land situated in the U. Wuthrick Survey, Abstract Number 1693, the G.J. Ashabranner Survey, Abstract Number 7, and the J.M. Daniel Survey, Abstract Number 395, Tarrant County, Texas and being more particularly described by metes and bounds as follows:

**BEGINNING** at the common southeast corner of Lot 9, Block F, and the northeast corner of Lot 10, Block F, Melody Oaks, an addition to the City of Fort Worth recorded in Volume 388-11, Page 112, Plat Records, Tarrant County, Texas:

**THENCE** S 89°27'17"W, 37.05 feet;

**THENCE** N 70°19'02"W, 1102.82 feet;

**THENCE** N 70°37'18"W, 1408.46 feet;

**THENCE** N 70°07'50"W, 2463.72 feet;

**THENCE** N 71°05'26"W, 480.14 feet;

**THENCE** N 75°56'53"W, 1181.82 feet;

**THENCE** N 75°52'31"W, 968.01 feet;

**THENCE** N 00°43'40"W, 539.86 feet;

**THENCE** S 74°27'28"E, 1104.68 feet;

**THENCE** S 74°37'52"E, 1159.75 feet;

**THENCE** S 69°59'17"E, 539.97 feet;

**THENCE** S 69°10'59"E, 2452.68 feet;

**THENCE** S 69°43'22"E, 1427.39 feet;

**THENCE** S 68°56'54"E, 1009.82 feet;

**THENCE** S 00°32'44"E, 377.18 feet, to the **POINT OF BEGINNING** and containing 3,363,832 square feet or 77.223 acres of land more or less.

APPENDIX 2A

1 inch = 750 Feet  
 0 375 750 Feet



Total Unit Acres: 74.587

**VANTAGE FORT WORTH ENERGY, LLC**  
**ROSEDALE SOUTH 14H**  
 SITUATED IN THE J.M. DANIEL, ABSTRACT 385, U. WUTHRICK, ABSTRACT 1693,  
 G.J. ASHBRANNER, ABSTRACT 7 TARRANT COUNTY, TEXAS



**Legend**

- PROPOSED BOTTOM HOLE LOCATION (BHL)
- FIRST PERFORATION POINT
- ◇ PROPOSED SURFACE HOLE LOCATION (SHL)
- KICK
- - - LATERAL
- ▭ MPA UNIT BOUNDARY
- ▭ Unleased
- ▨ Partial Lease

ROSEDALE SOUTH 14H	Tract #	Distance Wellbore
	3519	216
	3520*	52
	3525	218
	3552	Traversed
	3556	36
	3558	39
	3561	53
	3586*	26
	3587	48
	3596	Traversed
	3597	Traversed
	3599	Traversed
	3621	226'
	3654	2'
	3656	38'
	3664	180'
	3694	11'
	3709	221'
	3719	Traversed
	3758*	69'
	3783*	Traversed
	3812	104'
	3826	41'
	3856*	113'
	3860	184'
	3880	102'
	3949	162'
	3950	83'
	3961	Traversed
	3962	Traversed
	3981	177'
	4003*	179'
	4022*	190'
	4055	Traversed
	4073	56'

\*Partial Lease

Appendix 3

THIS PLAT WAS PREPARED FROM RECORDS FURNISHED TO REPRESENT THE ROSEDALE SOUTH AND WEST UNITS AND THE MINERAL TRACTS WITHIN THOSE UNITS FOR THE SOLE PURPOSE OF VANTAGE FORT WORTH ENERGY, LLC, AND DOES NOT REPRESENT A BOUNDARY SURVEY.



## Rosedale South 14 MIPA Unit Description

**BEING** a 74.587 acre tract of land situated in the U. Wuthrick Survey, Abstract Number 1693, the G.J. Ashabranner Survey, Abstract Number 7, and the J.M. Daniel Survey, Abstract Number 395, Tarrant County, Texas and being more particularly described by metes and bounds as follows:

**BEGINNING** at the common southeast corner of Lot 9, Block F, and the northeast corner of Lot 10, Block F, Melody Oaks, an addition to the City of Fort Worth recorded in Volume 388-11, Page 112, Plat Records, Tarrant County, Texas:

**THENCE** S 00°53'15"E, 107.14 feet;

**THENCE** S 69°50'19"E, 19.17 feet;

**THENCE** S 00°10'26"E, 280.06 feet;

**THENCE** N 72°14'50"W, 493.24 feet;

**THENCE** N 70°30'53"W, 769.30 feet;

**THENCE** N 69°59'08"W, 22.31 feet;

**THENCE** N 70°04'30"W, 106.57 feet;

**THENCE** N 70°09'23"W, 96.37 feet;

**THENCE** N 70°25'08"W, 95.10 feet;

**THENCE** N 70°16'33"W, 92.49 feet;

**THENCE** N 69°54'00"W, 93.25 feet;

**THENCE** N 69°19'30"W, 92.34 feet;

**THENCE** N 69°25'45"W, 53.99 feet;

**THENCE** S 89°27'08"W, 115.39 feet;

**THENCE** N 71°33'20"W, 589.45 feet;

**THENCE** N 24°18'07"E, 121.85 feet;

**THENCE** S 89°08'16"W, 340.87 feet;

APPENDIX 3A

THENCE N 69°35'57"W, 632.17 feet;

THENCE N 71°53'06"W, 1590.29 feet;

THENCE N 72°23'50"W, 422.03 feet;

THENCE N 77°13'36"W, 1206.49 feet;

THENCE N 77°18'08"W, 838.71 feet;

THENCE N 00°43'40"W, 533.14 feet;

THENCE S 75°52'31"E, 968.01 feet;

THENCE S 75°56'53"E, 1181.82 feet;

THENCE S 71°05'26"E, 480.14 feet;

THENCE S 70°07'50"E, 2463.72 feet;

THENCE S 70°37'18"E, 1408.46 feet;

THENCE S 70°19'02"E, 1102.82 feet;

THENCE N 89°27'17"E, 37.05 feet to the **POINT OF BEGINNING** and containing 3,249,003 square feet or 74.587 acres of land more or less.



Total Unit Acres: 39.972



1 inch = 750 Feet  
 0 375 750 Feet

**VANTAGE FORT WORTH ENERGY, LLC**  
**ROSEDALE SOUTH 15H**  
 SITUATED IN THE J.M. DANIEL, ABSTRACT 395; U. WUTHRICK, ABSTRACT 1693;  
 G.J. ASHABRANNER, ABSTRACT 7 TARRANT COUNTY, TEXAS



**Legend**

- PROPOSED BOTTOM HOLE LOCATION (BHL)
- FIRST PERFORATION POINT
- ◇ PROPOSED SURFACE HOLE LOCATION (SHL)
- KICK
- - - LATERAL
- ▭ MIPA UNIT BOUNDARY
- ▭ Unleased
- ▨ Partial Lease

ROSEDALE SOUTH 15H		
Tract #	Distance Wellbore	Traversed
3621	182'	
3664	216'	
3686*		Traversed
3701	141'	
3709	184'	
3752*	13'	
3762	148'	
3796	7'	
3806	18'	
3812	221'	
3818	64'	
3841	64'	
3860	133'	
3862	42'	
3892	71'	
3907		Traversed
3919*	217'	
3934	185'	
3949	113'	
3950	182'	
3960	113'	
3981	87'	
3995	39'	
4003*	34'	
4022*		Traversed
4028		Traversed
*Partial Lease		

Appendix 4



**Rosedale South 15H MIPA Unit Description**

**BEING** a 39.989 acre tract of land situated in the U. Wuthrick Survey, Abstract Number 1693, and the G.J. Ashabranner Survey, Abstract Number 7, Tarrant County, Texas and being more particularly described by metes and bounds as follows:

**COMMENCING** at the common southeast corner of Lot 13, Block 2, Sandy Acres Addition, an addition to the City of Fort Worth recorded in Volume 388-L, Page 22, Plat Records, Tarrant County, Texas:

**THENCE** S 89°08'16"W, 122.36 feet, to the **POINT OF BEGINNING**;

**THENCE** S 89°08'16"W, 1161.46 feet;

**THENCE** N 74°30'03"W, 1114.51 feet;

**THENCE** N 74°01'31"W, 367.49 feet;

**THENCE** N 78°27'33"W, 1229.39 feet, to the beginning of a non-tangent curve to the left;

**THENCE** with said non-tangent curve to the left, an arc distance of 175.77 feet, through a central angle of 19°21'28", having a radius of 520.26 feet, the long chord which bears N 37°57'44"W, 174.94 feet to the beginning of a compound curve to the left;

**THENCE** with said compound curve to the left, an arc distance of 517.80 feet, through a central angle of 43°29'28", having a radius of 682.16 feet, the long chord which bears N 68°52'32"W, 505.46 feet;

**THENCE** N 90°00'00"W, 124.45 feet;

**THENCE** N 00°43'40"W, 346.06 feet;

**THENCE** S 77°18'08"E, 838.71 feet;

**THENCE** S 77°13'36"E, 1206.49 feet;

**THENCE** S 72°23'50"E, 422.03 feet;

**THENCE** S 71°53'06"E, 1590.29 feet;

**THENCE** S 69°35'57"E, 632.17 feet to the **POINT OF BEGINNING** and containing 1,741.934 square feet or 39.989 acres of land more or less.

APPENDIX 4A