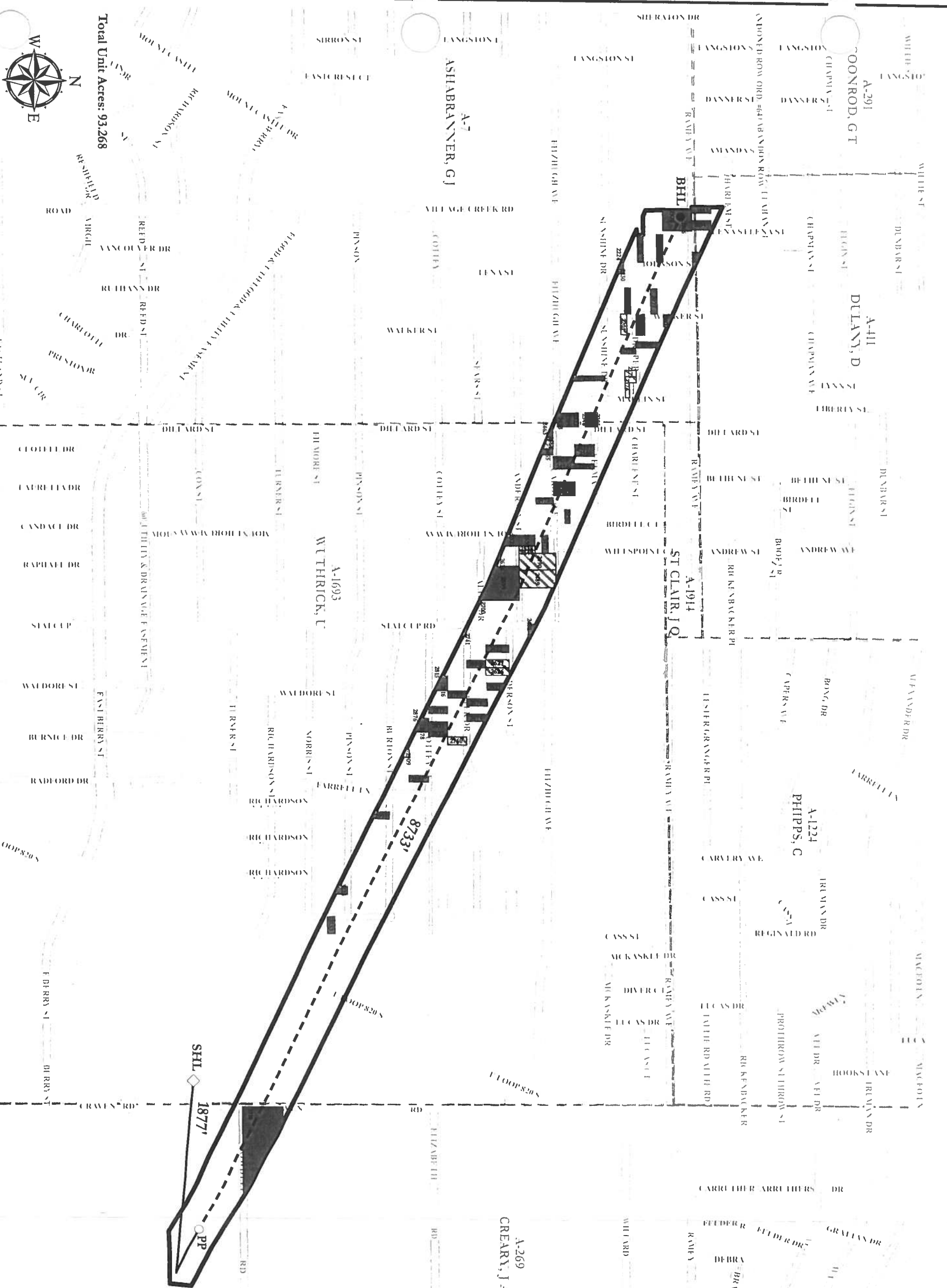


1 inch = 750 Feet
 0 375 750 Feet



Total Unit Acres: 93.268

VANTAGE FORT WORTH ENERGY, LLC
ROSEDALE SOUTH WEST 3H
 SITUATED IN THE D. DULANY, ABSTRACT 411; J.A. CREARY, ABSTRACT 289;
 U. WUTHRICK, ABSTRACT 1693; G.J. ASHABRANNER, ABSTRACT 7 TARRANT COUNTY, TEXAS



ROSEDALE SOUTH WEST 3H			
Tract #	Distance Wellbore	Tract #	Distance Wellbore
1668	190'	2472	10'
1853	90'	2477	Traversed
1854	89'	2489*	Traversed
1966	Traversed	2490*	Traversed
1967	183'	2491	175'
1970	Traversed	2492	223'
2066	Traversed	2538*	2'
2077	12'	2539	15'
2100	74'	2540*	Traversed
2130	115'	2573	129'
2136	Traversed	2599	Traversed
2173*	83'	2621	98'
2174*	103'	2622	Traversed
2178	Traversed	2626	39'
2183	45'	2627*	13'
2201*	9'	2636	216'
2224	250'	2674	69'
2230	217'	2676	17'
2295	Traversed	2686	Traversed
2341	23'	2700	Traversed
2346	Traversed	2741	196'
2350	Traversed	2753	Traversed
2354	19'	2760*	18'
2357	Traversed	2815	165'
2372	64'	2816	138'
2389	112'	2819	60'
2410	82'	2821	7'
2411	253'	2822	Traversed
2419	Traversed	2876	150'
2424	Traversed	2878	126'
2427	Traversed	2885	Traversed
2428	Traversed	2909	174'
2433	164'	2995	94'
2463	203'	3125	121'
2464	177'	3133	71'
2465	157'	3318	Traversed

*Partial Lease

Legend

- PROPOSED BOTTOM HOLE LOCATION (BHL)
- FIRST PERFORATION POINT
- ◇ PROPOSED SURFACE HOLE LOCATION (SHL)
- KICK
- - - LATERAL
- ▭ MIPA UNIT BOUNDARY
- ▭ Unleased
- ▨ Partial Lease

APPENDIX 1

Rosedale South West 3H MIPA Unit Description

BEING a 93.268 acre tract of land situated in the J. Creary Survey, Abstract Number 269, the U. Wuthrick Survey, Abstract Number 1693, the G.J. Ashabrunner Survey, Abstract Number 7, and the D. Dulany Survey, Abstract Number 411, Tarrant County, Texas and being more particularly described by metes and bounds as follows:

COMMENCING at the southeast corner of Lot 4, Block 4, being the northeast corner of Lot 5, Block 4, Handley Heights South Addition, an addition to the City of Fort Worth recorded in Volume 1867, Page 310, Plat Records, Tarrant County, Texas:

THENCE N 16°17'46" E, 609.37 feet, to the **POINT OF BEGINNING**;

THENCE N 61°08'09"W, 248.18 feet;

THENCE N 63°37'41"W, 782.90 feet;

THENCE N 65°18'53"W, 1489.91 feet;

THENCE N 64°23'25"W, 2390.87 feet;

THENCE N 64°05'28"W, 699.46 feet;

THENCE N 68°14'38"W, 1169.65 feet;

THENCE N 67°36'07"W, 1495.72 feet;

THENCE N 66°20'31"W, 338.28 feet;

THENCE N 88°38'42"E, 43.30 feet;

THENCE N 01°28'14"W, 47.15 feet;

THENCE S 89°00'14"W, 146.23 feet;

THENCE N 66°20'31"W, 52.15 feet;

THENCE N 00°20'37"W, 353.07 feet;

THENCE S 89°28'00"W, 26.86 feet;

THENCE N 00°17'39"W, 146.07 feet;

THENCE N 00°34'19"W, 89.05 feet;

APPENDIX 1A

THENCE S 65°23'54"E, 751.30 feet;

THENCE S 66°51'16"E, 1510.68 feet;

THENCE S 66°58'24"E, 1163.87 feet;

THENCE S 62°58'41"E, 725.05 feet;

THENCE S 63°24'52"E, 2371.96 feet;

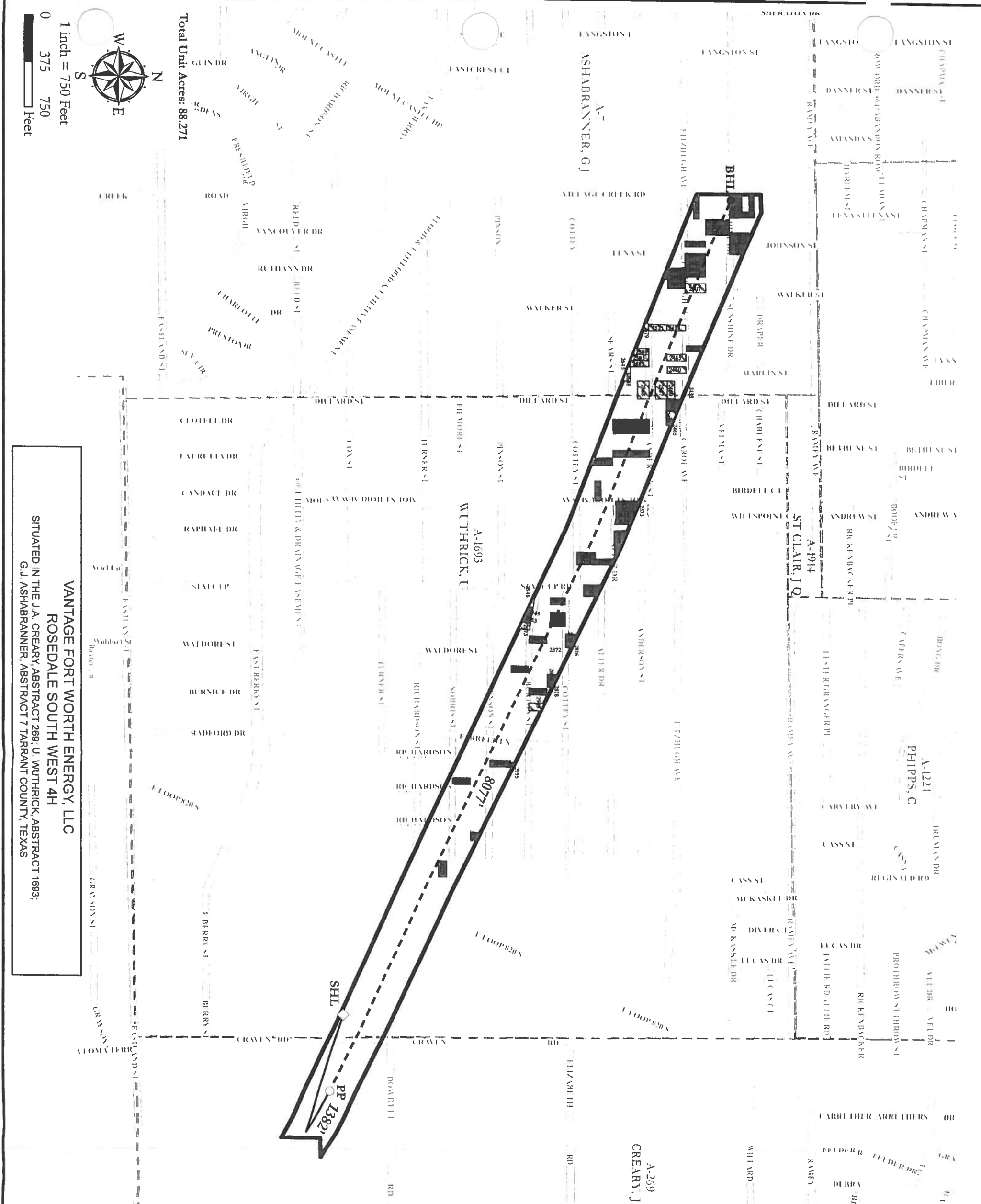
THENCE S 64°26'45"E, 1498.80 feet;

THENCE S 60°46'58"E, 804.91 feet;

THENCE S 60°49'57"E, 531.51 feet;

THENCE S 05°10'51"W, 162.44 feet;

THENCE S 88°37'18"W, 395.38 feet, to the **POINT OF BEGINNING** and containing 4062755 square feet or 93.268 acres of land more or less.



1 inch = 750 Feet
 0 375 750 Feet



Total Unit Acres: 88.271

VANTAGE FORT WORTH ENERGY, LLC
ROSEDALE SOUTH WEST 4H
 SITUATED IN THE J.A. CREARY, ABSTRACT 269, U. WUTHRICK, ABSTRACT 1693,
 G.J. ASHABRANNER, ABSTRACT 7 TARRANT COUNTY, TEXAS

Legend

- PROPOSED BOTTOM HOLE LOCATION (BHL)
- FIRST PERFORMANCE POINT
- ◇ PROPOSED SURFACE HOLE LOCATION (SHL)
- KICK
- - - LATERAL
- ▭ MIPA UNIT BOUNDARY
- ▭ Unleased
- ▨ Partial Lease

ROSEDALE SOUTH WEST 4H			
Tract #	Distance Wellbore	Tract #	Distance Wellbore
2185	143'	2600	Traversed
2224	95'	2606	Traversed
2230	133'	2607	Traversed
2238	Traversed	2632	Traversed
2315	Traversed	2633	87'
2315	Traversed	2636	106'
2341	251'	2645*	214'
2383	172'	2648*	190'
2394	35'	2700	89'
2399	Traversed	2719	51'
2402	Traversed	2731	71'
2403	Traversed	2741	89'
2405	Traversed	2776	Traversed
2407*	Traversed	2780	Traversed
2411	116'	2815	130'
2433	240'	2816	156'
2451	63'	2862	Traversed
2455*	4'	2864	Traversed
2458*	Traversed	2865	Traversed
2460*	42'	2876	138'
2461	110'	2878	161'
2462	91'	2902	Traversed
2463	130'	2907	54'
2464*	169'	2909	106'
2465	193'	2946	195'
2480*	85'	2949	175'
2507*	Traversed	2953	160'
2521*	71'	2973	143'
2568*	Traversed	2982	Traversed
2573	185'	2995	181'
2579*	209'	3049	19'
2580	132'	3125	132'
2583*	114'	3156	32'
2585*	95'	3229	Traversed
2599	130'		

*Partial Lease

Appendix 2

Rosedale South West 4H MIPA Unit Description

BEING a 88.270 acre tract of land situated in the J. Creary Survey, Abstract Number 269, the U. Wuthrick Survey, Abstract Number 1693, and the G.J. Ashabranner Survey, Abstract Number 7, Tarrant County, Texas and being more particularly described by metes and bounds as follows:

COMMENCING at the southeast corner of Lot 4, Block 4, being the northeast corner of Lot 5, Block 4, Handley Heights South Addition, an addition to the City of Fort Worth recorded in Volume 1867, Page 310, Plat Records, Tarrant County, Texas:

THENCE N 00°21'41" W, 263.25 feet to the **POINT OF BEGINNING**;

THENCE N 63°00'59"W, 223.74 feet;

THENCE N 64°53'33"W, 282.41 feet;

THENCE N 64°53'33"W, 494.10 feet;

THENCE N 66°11'14"W, 1480.33 feet;

THENCE N 65°21'33"W, 2408.51 feet;

THENCE N 65°14'27"W, 673.10 feet;

THENCE N 69°30'50"W, 1171.14 feet;

THENCE N 68°57'02"W, 1481.38 feet;

THENCE N 68°04'09"W, 297.09 feet;

THENCE N 00°20'37"W, 518.45 feet;

THENCE N 88°38'42"E, 151.52 feet;

THENCE S 66°20'31"E, 338.28 feet;

THENCE S 67°36'07"E, 1495.72 feet;

THENCE S 68°14'38"E, 1169.65 feet;

THENCE S 64°05'28"E, 699.46 feet;

THENCE S 64°23'25"E, 2390.87 feet;

THENCE S 65°18'53"E, 1489.91 feet;

APPENDIX 2A

THENCE S 63°37'41"E, 782.90 feet;

THENCE S 61°08'09"E, 248.18 feet;

THENCE S 88°37'18"W, 174.77 feet;

THENCE S 00°22'22"E, 317.44 feet, to the **POINT OF BEGINNING** and containing 3845049 square feet or 88.270 acres of land more or less.

Rosedale South West 5H MIPA Unit Description

BEING a 92.020 acre tract of land situated in the J. Creary Survey, Abstract Number 269, the U. Wuthrick Survey, Abstract Number 1693, and the G.J. Ashabranner Survey, Abstract Number 7, Tarrant County, Texas and being more particularly described by metes and bounds as follows:

COMMENCING at the southeast corner of Lot 4, Block 4, being the northeast corner of Lot 5, Block 4, Handley Heights South Addition, an addition to the City of Fort Worth recorded in Volume 1867, Page 310, Plat Records, Tarrant County, Texas:

THENCE S 51°33'57" E, 527.63 feet to the **POINT OF BEGINNING**;

THENCE N 65°44'34"W, 1610.55 feet;

THENCE N 67°03'57"W, 1470.39 feet;

THENCE N 66°19'12"W, 2420.03 feet;

THENCE N 66°26'10"W, 650.56 feet;

THENCE N 70°47'06"W, 1168.93 feet;

THENCE N 70°18'26"W, 1465.01 feet;

THENCE N 70°20'59"W, 121.82 feet;

THENCE N 01°46'30"E, 237.65 feet;

THENCE N 00°23'03"W, 129.35 feet;

THENCE N 00°14'56"W, 103.96 feet;

THENCE N 00°16'30"W, 102.03 feet;

THENCE S 68°04'09"E, 297.09 feet;

THENCE S 68°57'02"E, 1481.38 feet;

THENCE S 69°30'50"E, 1171.14 feet;

THENCE S 65°14'27"E, 673.10 feet;

THENCE S 65°21'33"E, 2408.51 feet;

APPENDIX 3A

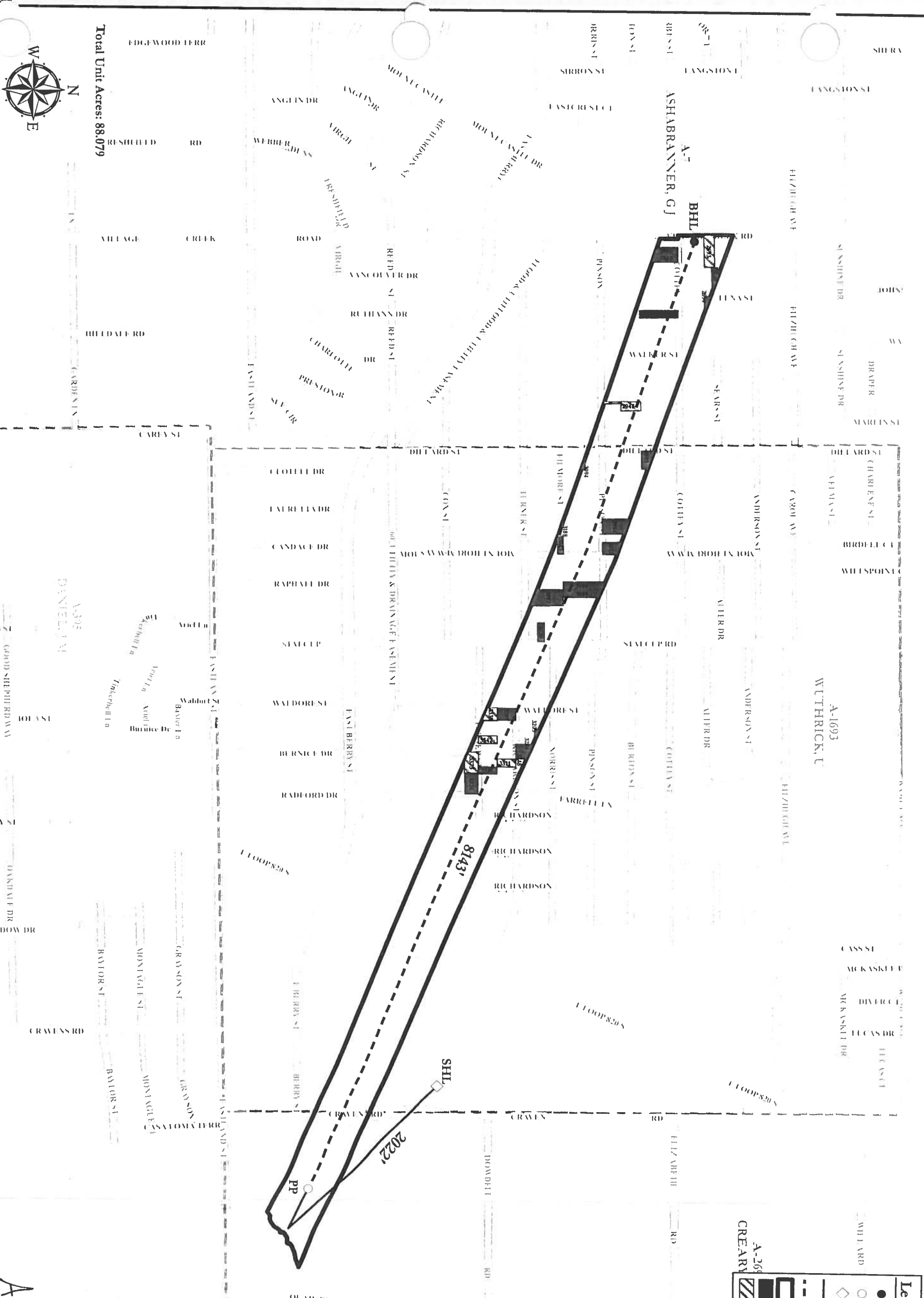
THENCE S 66°11'14"E, 1480.33 feet;
THENCE S 64°53'33"E, 494.10 feet;
THENCE S 64°53'33"E, 282.41 feet;
THENCE S 63°00'59"E, 223.74 feet;
THENCE S 62°51'20"E, 304.21 feet;
THENCE S 62°55'25"E, 551.47 feet;
THENCE S 89°19'00"W, 46.58 feet;
THENCE N 88°57'30"W, 27.27 feet;
THENCE S 08°40'11"W, 56.06 feet;
THENCE S 75°36'10"W, 29.77 feet;
THENCE S 79°34'03"W, 7.63 feet;
THENCE S 71°08'52"W, 7.37 feet;
THENCE S 79°34'35"W, 14.20 feet;
THENCE S 65°39'03"W, 17.46 feet;
THENCE S 88°44'20"W, 10.00 feet;
THENCE S 62°43'52"W, 15.65 feet;
THENCE S 58°52'20"W, 18.55 feet;
THENCE S 54°33'33"W, 20.70 feet;
THENCE S 39°40'28"W, 6.17 feet;
THENCE S 51°14'03"W, 15.24 feet;
THENCE S 22°24'21"W, 5.12 feet;



Total Unit Acres: 88.079

1 inch = 750 Feet
0 375 750 Feet

VANTAGE FORT WORTH ENERGY, LLC
ROSEDALE SOUTH WEST 6H
SITUATED IN THE J.A. CREARY, ABSTRACT 269; U. WUTHRICK, ABSTRACT 1693;
G.J. ASHBRANNER, ABSTRACT 7 TARRANT COUNTY, TEXAS



Legend

- PROPOSED BOTTOM HOLE LOCATION (BHL)
- FIRST PERFORATION POINT
- ◇ PROPOSED SURFACE HOLE LOCATION (SHL)
- KICK
- - - LATERAL
- ▭ MIPA UNIT BOUNDARY
- ▭ Unleased
- ▨ Partial Lease

ROSEDALE SOUTH WEST 6H	Tract #	Distance Wellbore
	2667	189'
	2693*	72'
	2694	211'
	2842	69'
	2852	91'
	2857	147'
	2891	147'
	2945*	Traversed
	2954	32'
	3012	93'
	3086	Traversed
	3089	Traversed
	3094	216'
	3143	153'
	3188	233'
	3197	Traversed
	3203	180'
	3220	19'
	3230	242'
	3246	95'
	3248	119'
	3289	Traversed
	3307.1	221'
	3311*	10'
	3339*	108'
	3342*	37'
	3346	Traversed
	3373*	80'
	3374	13'

*Partial Lease

APPENDIX 4

THIS PLAT WAS PREPARED FROM RECORDS FURNISHED TO REPRESENT THE ROSEDALE SOUTH AND WEST UNITS AND THE MINERAL TRACTS WITHIN THOSE UNITS FOR THE SOLE PURPOSE OF VANTAGE FORT WORTH ENERGY, LLC, AND DOES NOT REPRESENT A BOUNDARY SURVEY.

Rosedale South West 6H MIPA Unit Description

BEING a 88.079 acre tract of land situated in the J. Creary Survey, Abstract Number 269, the U. Wuthrick Survey, Abstract Number 1693, and the G.J. Ashabrunner Survey, Abstract Number 7, Tarrant County, Texas and being more particularly described by metes and bounds as follows:

COMMENCING at the northeast corner of Lot 1, Block F, Melody Oaks, an addition to the City of Fort Worth recorded in Volume 388-11, Page 112, Plat Records, Tarrant County, Texas:

THENCE N 56°57'11" E, 632.49 feet to the **POINT OF BEGINNING**;

THENCE N 63°50'35"W, 315.20 feet;

THENCE N 66°46'08"W, 229.10 feet;

THENCE N 65°53'45"W, 769.91 feet;

THENCE N 67°56'49"W, 1458.88 feet;

THENCE N 67°16'38"W, 2430.51 feet;

THENCE N 69°03'25"W, 625.92 feet;

THENCE N 71°18'29"W, 1163.24 feet;

THENCE N 71°39'03"W, 1374.89 feet;

THENCE N 00°17'40"W, 140.39 feet;

THENCE S 89°40'24"W, 27.80 feet;

THENCE N 00°46'57"W, 422.41 feet;

THENCE N 00°47'03"W, 3.74 feet;

THENCE N 01°46'27"E, 5.05 feet;

THENCE S 70°20'59"E, 121.82 feet;

THENCE S 70°18'26"E, 1465.01 feet;

THENCE S 70°47'06"E, 1168.93 feet;

THENCE S 66°26'10"E, 650.56 feet;

APPENDIX 4A

THENCE S 66°19'12"E, 2420.03 feet;
THENCE S 67°03'57"E, 1470.39 feet;
THENCE S 65°44'34"E, 1610.55 feet;
THENCE S 81°17'06"W, 14.33 feet;
THENCE S 61°43'05"W, 10.15 feet;
THENCE S 75°24'34"W, 19.57 feet;
THENCE S 65°12'22"W, 23.01 feet;
THENCE S 77°58'23"W, 12.24 feet;
THENCE S 89°20'38"W, 6.99 feet;
THENCE S 70°45'23"W, 14.78 feet;
THENCE S 89°15'38"W, 6.99 feet;
THENCE S 67°48'29"W, 19.35 feet;
THENCE S 58°40'12"W, 13.94 feet;
THENCE S 71°08'49"W, 7.36 feet;
THENCE S 62°24'23"W, 15.70 feet;
THENCE S 45°02'54"W, 16.76 feet;
THENCE S 27°17'19"W, 10.64 feet;
THENCE S 11°20'36"W, 9.61 feet;
THENCE S 34°26'31"W, 8.68 feet;
THENCE N 82°11'10"W, 16.18 feet;
THENCE S 89°18'43"W, 5.00 feet;
THENCE S 74°21'06"W, 9.30 feet;

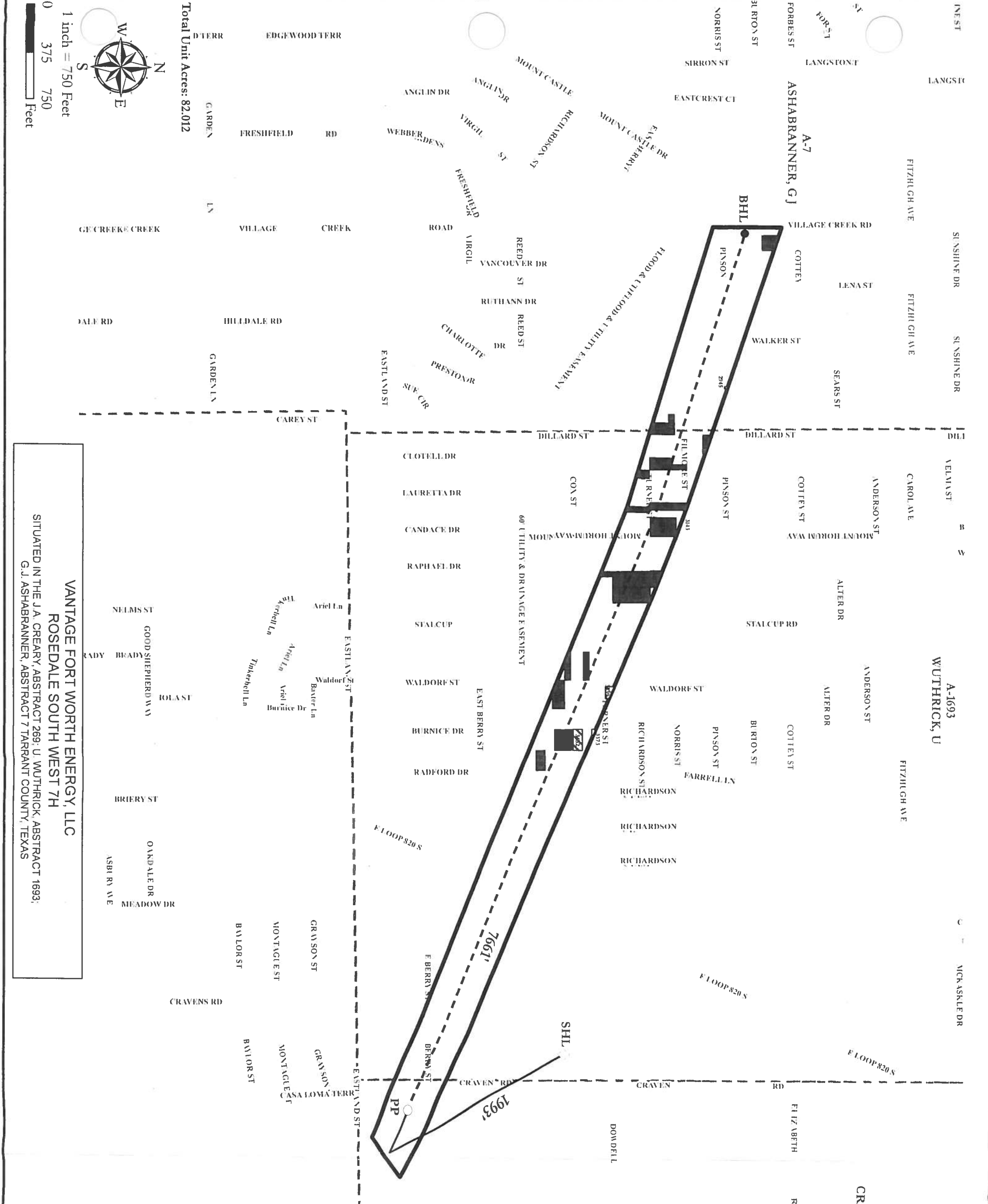
THEENCE S 55°28'50"W, 8.44 feet;
THEENCE S 51°12'19"W, 15.24 feet;
THEENCE S 55°26'29"W, 8.43 feet;
THEENCE S 44°20'46"W, 9.90 feet;
THEENCE S 22°14'29"W, 12.81 feet;
THEENCE S 23°52'16"E, 7.61 feet;
THEENCE S 14°58'03"W, 11.08 feet;
THEENCE S 87°56'19"W, 10.01 feet;
THEENCE S 46°12'42"W, 15.07 feet;
THEENCE S 22°20'01"W, 5.10 feet;
THEENCE S 44°15'51"W, 9.90 feet;
THEENCE S 22°26'41"W, 5.11 feet;
THEENCE S 35°58'15"W, 11.71 feet;
THEENCE S 46°03'43"W, 6.86 feet;
THEENCE S 31°53'45"W, 5.58 feet;
THEENCE S 55°26'33"W, 8.43 feet;
THEENCE S 39°40'28"W, 6.17 feet;
THEENCE S 58°40'09"W, 13.94 feet;
THEENCE S 63°00'34"W, 21.20 feet;
THEENCE S 70°20'33"W, 7.40 feet;
THEENCE S 74°57'58"W, 9.29 feet;
THEENCE S 70°24'52"W, 7.40 feet;

THENCE N 77°10'48"W, 10.28 feet;

THENCE S 89°16'13"W, 11.00 feet;

THENCE N 68°01'43"W, 6.82 feet;

THENCE S 56°57'13"W, 40.96 feet, to the **POINT OF BEGINNING** and containing 3,836,727 square feet or 88.079 acres of land more or less.



1 inch = 750 Feet
 0 375 750 Feet



Total Unit Acres: 82.012

VANTAGE FORT WORTH ENERGY, LLC
 ROSEDALE SOUTH WEST 7H
 SITUATED IN THE J.A. CREARY, ABSTRACT 269; U. WUTHRICK, ABSTRACT 1693;
 G.J. ASHABRANNER, ABSTRACT 7 TARRANT COUNTY, TEXAS

APPENDIX 5

ROSEDALE SOUTH WEST 7H Tract #	Distance Wellbore
2842	150'
2852	135'
2945*	222'
3094	170'
3143	210'
3177	43'
3188	Traversed
3197	133'
3200	Traversed
3230	Traversed
3233	Traversed
3235	89'
3291	131'
3305.1	54'
3305.2	Traversed
3307.1	37'
3307.2	Traversed
3309	46'
3339*	158'
3373*	188'
3386	131'
3415	Traversed
3432*	50'
3454	Traversed
3457	36'
3473	23'
3480	Traversed
3489	121'
3532	24'

*Partial Lease

- Legend**
- PROPOSED BOTTOM HOLE LOCATION (BHL)
 - FIRST PERFORATION POINT
 - PROPOSED SURFACE HOLE LOCATION (SHL)
 - KICK
 - LATERAL
 - MIPA UNIT BOUNDARY
 - Unleased
 - ▨ Partial Lease



Rosedale South West 7H MIPA Unit Description

BEING an 82.012 acre tract of land situated in the J. Creary Survey, Abstract Number 269, the W. Wuthrick Survey, Abstract Number 1693, and the G.J. Ashabranner Survey, Abstract Number 7, Tarrant County, Texas and being more particularly described by metes and bounds as follows:

COMMENCING at the northeast corner of Lot 1, Block F, Melody Oaks, an addition to the City of Fort Worth recorded in Volume 388-11, Page 112, Plat Records, Tarrant County, Texas:

THENCE N 56°57'11" E, 213.92 feet to the **POINT OF BEGINNING**;

THENCE N 67°41'20"W, 309.09 feet;

THENCE N 68°48'58"W, 165.67 feet;

THENCE N 67°07'42"W, 75.71 feet;

THENCE N 67°07'42"W, 515.35 feet;

THENCE N 68°49'54"W, 1444.26 feet;

THENCE N 68°13'56"W, 2441.79 feet;

THENCE N 68°49'11"W, 587.54 feet;

THENCE N 73°20'13"W, 1154.79 feet;

THENCE N 73°03'01"W, 1227.66 feet;

THENCE N 00°17'40"W, 552.63 feet;

THENCE S 71°39'03"E, 1374.89 feet;

THENCE S 71°18'29"E, 1163.24 feet;

THENCE S 69°03'25"E, 625.92 feet;

THENCE S 67°16'38"E, 2430.51 feet;

THENCE S 67°56'49"E, 1458.88 feet;

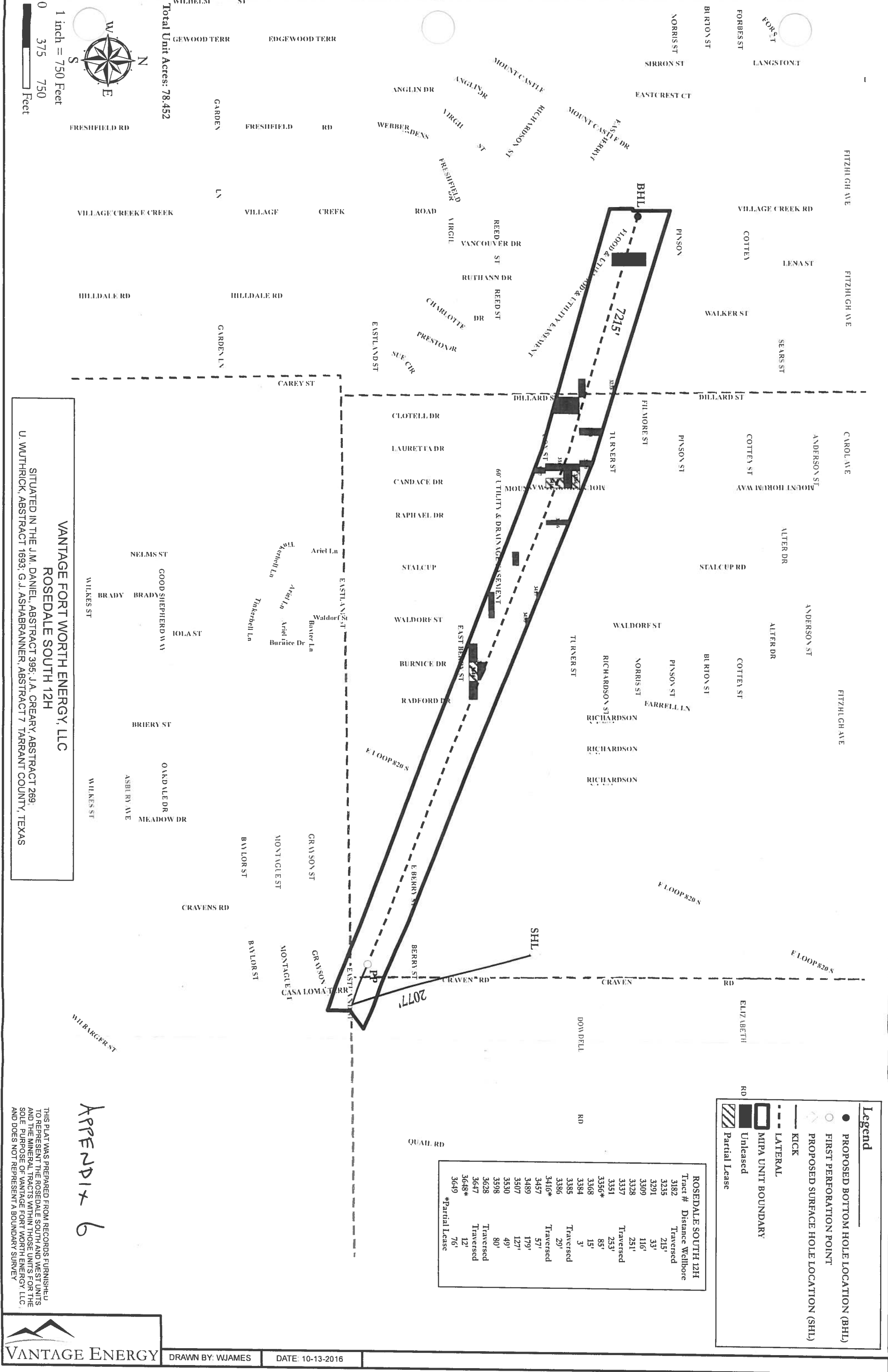
THENCE S 65°53'45"E, 769.91 feet;

THENCE S 66°46'08"E, 229.10 feet;

APPENDIX 5A

THENCE S 63°50'35"E, 315.20 feet;

THENCE S 56°57'11"W, 418.57 feet, to the **POINT OF BEGINNING** and containing 3572431 square feet or 82.012 acres of land more or less.



1 inch = 750 Feet
 0 375 750 Feet



Total Unit Acres: 78.452

VANTAGE FORT WORTH ENERGY, LLC
ROSEDALE SOUTH 12H
 SITUATED IN THE J.M. DANIEL, ABSTRACT 396, J.A. CREARY, ABSTRACT 269,
 U. WUTHRICK, ABSTRACT 1693; G.J. ASHARANNER, ABSTRACT 7 TARRANT COUNTY, TEXAS

Legend

- PROPOSED BOTTOM HOLE LOCATION (BHL)
- FIRST PERFORATION POINT
- ◇ PROPOSED SURFACE HOLE LOCATION (SHL)
- KICK
- - - LATERAL
- MIPA UNIT BOUNDARY
- ▭ Unleased
- ▨ Partial Lease

ROSEDALE SOUTH 12H	
Tract #	Distance Wellbore Traversed
3182	215'
3235	33'
3291	116'
3309	251'
3328	253'
3337	85'
3351	15'
3356*	3'
3368	Traversed
3384	29'
3385	Traversed
3386	57'
3416*	179'
3457	127'
3489	49'
3507	80'
3530	Traversed
3598	12'
3628	76'
3647	
3648*	
3649	

*Partial Lease

APPENDIX 6

THIS PLAT WAS PREPARED FROM RECORDS FURNISHED TO REPRESENT THE ROSEDALE SOUTH AND WEST UNITS AND THE MINERAL TRACTS WITHIN THOSE UNITS FOR THE SOLE PURPOSE OF VANTAGE FORT WORTH ENERGY, LLC, AND DOES NOT REPRESENT A BOUNDARY SURVEY



Rosedale South 12H MIPA Unit Description

BEING a 78.452 acre tract of land situated in the J. Creary Survey, Abstract Number 269, the U. Wuthrick Survey, Abstract Number 1693, the G.J. Ashabrunner Survey, Abstract Number 7, and the J.M. Daniel Survey, Abstract Number 395, Tarrant County, Texas and being more particularly described by metes and bounds as follows:

BEGINNING at the northeast corner of Lot 1, Block F, Melody Oaks, an addition to the City of Fort Worth recorded in Volume 388-11, Page 112, Plat Records, Tarrant County, Texas:

THENCE S 00°32'43"E, 206.05 feet;

THENCE N 68°56'54"W, 1009.82 feet;

THENCE N 69°43'22"W, 1427.39 feet;

THENCE N 69°10'59"W, 2452.68 feet;

THENCE N 69°59'17"W, 539.97 feet;

THENCE N 74°37'52"W, 1159.75 feet;

THENCE N 74°27'28"W, 1104.68 feet;

THENCE N 00°43'40"W, 206.35 feet;

THENCE S 87°22'39"E, 17.57 feet;

THENCE N 00°17'40"W, 335.27 feet;

THENCE S 73°03'01"E, 1227.66 feet;

THENCE S 73°20'13"E, 1154.79 feet;

THENCE S 68°49'11"E, 587.54 feet;

THENCE S 68°13'56"E, 2441.79 feet;

THENCE S 68°49'54"E, 1444.26 feet;

THENCE S 67°07'42"E, 515.35 feet;

THENCE S 67°07'42"E, 75.71 feet;

APPENDIX 6A

THENCE S 68°48'58"E, 165.67 feet;

THENCE S 67°41'20"E, 309.09 feet;

THENCE S 56°57'11"W, 213.92 feet, to the **POINT OF BEGINNING** and containing 3,417,358 square feet or 78.452 acres of land more or less.