

REEVES COUNTY, TEXAS

METES AND BOUNDS DESCRIPTION

BEING the metes and bounds description of a 148.39 acre tract situated in SECTION NO. 08, BLOCK 5, H.&G.N.RR.CO. SURVEY, ABSTRACT NO. 926, Reeves County, Texas and in SECTION NO. 09, BLOCK 5, H.&G.N.RR.CO. SURVEY, ABSTRACT NO. 522, Reeves County, Texas.

Said metes and bounds being more particularly described as follows:

BEGINNING at a point of said SECTION 09, from which a Calculated Corner found for the Southeast corner of said SECTION NO. 09, bears N 77°09'50" W, a distance of 1969.60 feet (TIE) and N 12°50'10" E, a distance of 204.19 feet (TIE) to said POINT OF BEGINNING having a TX-Central Zone 4203, NAD 83 coordinate value of Y:10487818.63, X:1305469.24;

THENCE: N 77°04'55" W, along the south line of said 148.39 acre tract, a distance of 662.83 feet to a point;

THENCE: N 12°47'44" E, along the west line of said 148.39 acre tract, a distance of 5077.25 feet to a point;

THENCE: N 12°47'44" E, along the west line of said 148.39 acre tract, a distance of 4286.66 feet to a point;

THENCE: N 13°11'04" E, along the west line of said 148.39 acre tract, a distance of 936.57 feet to a point;

THENCE: S26°27'51" E, a distance of 894.09 feet to a point;

THENCE: N 69°42'29" E, a distance of 117.90 feet to a point;

THENCE: S 12°50'37" W, along the east line of said 148.39 acre tract, a distance of 4595.70 feet to a point

THENCE: S 12°50'37" W, along the east line of said 148.39 acre tract, a distance of 5078.26 feet to the POINT OF BEGINNING.

Said boundary tract containing 6,463,868.40 square feet or 148.39 acres in SECTION NO. 08 & SECTION NO. 09.

Exhibit No. 10A
O&G Docket No. 08-0304960
Date: July 7, 2017
Colgate Operating, LLC

NOTES:

- 1.) BEARINGS, DISTANCES, AREA AND COORDINATES SHOWN HEREON ARE GRID BASED ON "THE TEXAS COORDINATE SYSTEM OF 1983, CENTRAL ZONE" AS DETERMINED BY GPS OBSERVATIONS REFERENCED TO TRANSGLOBAL CONTROL POINT "SAM 3" (N: 10488004.16, E: 1323111.21) WHERE THE CONVERGENCE ANGLE IS 01°36'26.5" AND THE COMBINED SCALE FACTOR IS 0.99978737. ELEVATIONS ARE NAVD88 (GEOID 128).
- 2.) THIS PLAT WAS PREPARED WITHOUT THE BENEFIT OF A TITLE REPORT OR A REVIEW OF THE ABSTRACT OF TITLE OWNERSHIP INFORMATION WAS PROVIDED BY OTHERS.
- 3.) THE PLAT WAS PREPARED FOR TEXAS RAILROAD COMMISSION PERMITTING PURPOSES ONLY. SEE DOCUMENTS AND ELECTRONIC DATA FILED IN THE OFFICE OF TRANSGLOBAL SERVICES, LLC FOR COMPLETE RECONSTRUCTION OF THESE SECTIONS OR BLOCKS.
- 4.) THIS PLAT AND THE SURVEY IT IS BASED ON DO NOT CONSTITUTE AN:
 - a. ENVIRONMENTAL ASSESSMENT
 - b. WETLANDS DETERMINATION
 - c. SUBSURFACE DETERMINATION



Lease Overview Exhibit
MOSES 08-09
 Tract 1 - 74.19 Acres
 Section 08, Block 5, H & G N.RR.CO. Survey,
 Abstract No. 926

Tract 2 - 74.20 Acres
 Section 09, Block 5, H & G N.RR.CO. Survey,
 Abstract No. 522
 Reeves County, Texas



201 W. Wall St. - Suite 325
 Midland, Texas 79701
 Phone: (432) 218-7942
 TBPLS# 10194245

DRAWN BY: DHR	DATE: 07-08-2017
CHECKED BY: TAN	DATE: 07-08-2017
PAGE: 2 OF 2	SCALE: 1" = 1000'

DWG. NO. <small>The Resource Team Follows Colgate Energy's O&G Lease Outline</small>	REVISION NO. 0
---	-------------------

REEVES COUNTY, TEXAS

METES AND BOUNDS DESCRIPTION

BEING the metes and bounds description of a 159.01 acre tract situated in SECTION NO. 6, BLOCK 5, H. & G.N. RR. CO. SURVEY, ABSTRACT NO. 60, Reeves County, Texas, SECTION NO. 5, BLOCK 5, H. & G.N. RR. CO. SURVEY, ABSTRACT NO. 424, Reeves County, Texas and SECTION NO. 10, BLOCK 5, H. & G.N. RR. CO. SURVEY, ABSTRACT NO. 241, Reeves County .

Said metes and bounds being more particularly described as follows:

BEGINNING at a point of said SECTION 10, at the Calculated Corner found for the southeast corner of said SECTION NO. 10, said POINT OF BEGINNING having a TX- Central Zone 4203, NAD 83 coordinate value of Y:10486286.96, X:1312493.04;

THENCE: N 77°09'23" W, along the south line of said 159.01 acre tract, a distance of 536.70 feet to a point;

THENCE: N 12°50'38" E, along the west line of said 159.01 acre tract, a distance of 5196.78 feet to a point;

THENCE: N 12°50'38" E, along the west line of said 159.01 acre tract, a distance of 5398.34 feet to a point;

THENCE: N 12°50'38" E, along the west line of said 159.01 acre tract, a distance of 2053.24 feet to a point;

THENCE: N 69°45'01" E, a distance of 640.61 feet to a point;

THENCE: S 12°50'42" W, along the east line of said 159.01 acre tract, a distance of 139.43 feet to a point;

THENCE: S 12°50'46" W, along the east line of said 159.01 acre tract, a distance of 68.10 feet to a point;

THENCE: S 12°50'37" W, along the east line of said 159.01 acre tract, a distance of 1788.06 feet to a point;

THENCE: S 12°50'37" W, along the east line of said 159.01 acre tract, a distance of 407.31 feet to a point;

THENCE: S 12°50'37" W, along the east line of said 159.01 acre tract, a distance of 5400.39 feet to a point;

THENCE: S 12°50'37" W, along the east line of said 159.01 acre tract, a distance of 5051.43 feet to a point;

THENCE: S 12°50'38" W, along the east line of said 159.01 acre tract, a distance of 143.43 feet to the POINT OF BEGINNING.

Said boundary tract containing 6,926,475.60 square feet or 159.01 acres in SECTION NO. 06, SECTION NO. 5 & SECTION NO. 10

Exhibit No. 10 B
O&G Docket No. 08-0304960
Date: July 7, 2017
Colgate Operating, LLC

NOTES:

- 1.) BEARINGS, DISTANCES, AREA AND COORDINATES SHOWN HEREON ARE GRID BASED ON "THE TEXAS COORDINATE SYSTEM OF 1983, CENTRAL ZONE" AS DETERMINED BY GPS OBSERVATIONS REFERENCED TO TRANSGLOBAL CONTROL POINT "SAM 3" (N: 10488004.16, E: 1323111.21) WHERE THE CONVERGENCE ANGLE IS 01°36'26.5" AND THE COMBINED SCALE FACTOR IS 0.99978737. ELEVATIONS ARE NAVD88 (GEOID 12B).
- 2.) THIS PLAT WAS PREPARED WITHOUT THE BENEFIT OF A TITLE REPORT OR A REVIEW OF THE ABSTRACT OF TITLE. OWNERSHIP INFORMATION WAS PROVIDED BY OTHERS.
- 3.) THE PLAT WAS PREPARED FOR TEXAS RAILROAD COMMISSION PERMITTING PURPOSES ONLY. SEE DOCUMENTS AND ELECTRONIC DATA FILED IN THE OFFICE OF TRANSGLOBAL SERVICES, LLC FOR COMPLETE RECONSTRUCTION OF THESE SECTIONS OR BLOCKS.
- 4.) THIS PLAT AND THE SURVEY IT IS BASED ON DO NOT CONSTITUTE AN:
 - a. ENVIRONMENTAL ASSESSMENT
 - b. WETLANDS DETERMINATION
 - c. SUBSURFACE DETERMINATION



Lease Overview Exhibit
GOLIATH 06-10
 Tract 1 - 27.45 Acres
 Section 06, Block 5, H & G.N RR.CO. Survey,
 Abstract No. 60
 Tract 2 - 66.57 Acres
 Section 05, Block 5, H & G.N RR.CO. Survey,
 Abstract No. 424
 Tract 3 - 64.99 Acres
 Section 10, Block 5, H & G.N RR.CO. Survey,
 Abstract No. 241
 Reeves County, Texas



201 W. Wall St. - Suite 325
 Midland, Texas 79701
 Phone: (432) 218-7942
 TBPLS# 10194245

DRAWN BY: JMJ	DATE: 07-08-2017
CHECKED BY: TAN	DATE: 07-08-2017
PAGE: 2 OF 2	SCALE: 1" = 1000'

DWG. NO.	REVISION NO.
0	0

REEVES COUNTY, TEXAS

METES AND BOUNDS DESCRIPTION

BEING the metes and bounds description of a 155.00 acre tract situated in SECTION NO. 6, BLOCK 5, H. & G.N. RR. CO. SURVEY, ABSTRACT NO. 60, Reeves County, Texas, SECTION NO. 5, BLOCK 5, H. & G.N. RR. CO. SURVEY, ABSTRACT NO. 424, Reeves County, Texas and SECTION NO. 10, BLOCK 5, H. & G.N. RR. CO. SURVEY, ABSTRACT NO. 241, Reeves County .

Said metes and bounds being more particularly described as follows:

BEGINNING at a point of said SECTION 10, from which a Calculated Corner found for the southeast corner of said SECTION NO. 10, bears S 77°55'59", a distance of 2594.40 feet (TIE) to said POINT OF BEGINNING having a TX- Central Zone 4203, NAD 83 coordinate value of Y:10486829.33, X:1309955.97;

THENCE: N 77°55'59" W, along the south line of said 155.00 acre tract, a distance of 627.27 feet to a point;

THENCE: N 12°50'33" E, along the west line of said 155.00 acre tract, a distance of 5286.32 feet to a point;

THENCE: N 12°50'33" E, along the west line of said 155.00 acre tract, a distance of 5351.88 feet to a point;

THENCE: N 12°50'33" E, along the west line of said 155.00 acre tract, a distance of 303.73 feet to a point;

THENCE: N 69°44'46" E, along the north line of said 155.00 acre tract, a distance of 748.97 feet to a point;

THENCE: S 12°50'37" W, along the east line of said 155.00 acre tract, a distance of 712.57 feet to a point;

THENCE: S 12°50'37" W, along the east line of said 155.00 acre tract, a distance of 5362.73 feet to a point;

THENCE: S 12°50'37" W along the east line of said 155.00 acre tract, a distance of 5267.10 feet to the POINT OF BEGINNING.

Said boundary tract containing 6,751,800 square feet or 155.00 acres in SECTION NO. 06, SECTION NO. 5 & SECTION NO. 10

Exhibit No. 10 C
 O&G Docket No. 08-0304960
 Date: July 7, 2017
 Colgate Operating, LLC

NOTES:

- 1.) BEARINGS, DISTANCES, AREA AND COORDINATES SHOWN HEREON ARE GRID BASED ON "THE TEXAS COORDINATE SYSTEM OF 1983, CENTRAL ZONE" AS DETERMINED BY GPS OBSERVATIONS REFERENCED TO TRANSGLOBAL CONTROL POINT "SAM 3" (N: 10488004.16, E: 1323111.21) WHERE THE CONVERGENCE ANGLE IS 01°36'26.5" AND THE COMBINED SCALE FACTOR IS 0.99978737. ELEVATIONS ARE NAVD88 (GEOID 128).
- 2.) THIS PLAT WAS PREPARED WITHOUT THE BENEFIT OF A TITLE REPORT OR A REVIEW OF THE ABSTRACT OF TITLE. OWNERSHIP INFORMATION WAS PROVIDED BY OTHERS.
- 3.) THE PLAT WAS PREPARED FOR TEXAS RAILROAD COMMISSION PERMITTING PURPOSES ONLY. SEE DOCUMENTS AND ELECTRONIC DATA FILED IN THE OFFICE OF TRANSGLOBAL SERVICES, LLC FOR COMPLETE RECONSTRUCTION OF THESE SECTIONS OR BLOCKS.
- 4.) THIS PLAT AND THE SURVEY IT IS BASED ON DO NOT CONSTITUTE AN:
 - a. ENVIRONMENTAL ASSESSMENT
 - b. WETLANDS DETERMINATION
 - c. SUBSURFACE DETERMINATION



Lease Overview Exhibit
 KING DAVID 06-10
 Tract 1 - 7.31 Acres
 Section 06, Block 5, H & G.N. RR.CO. Survey,
 Abstract No. 60
 Tract 2 - 72.72 Acres
 Section 05, Block 5, H & G.N. RR.CO. Survey,
 Abstract No. 424
 Tract 3 - 72.97 Acres
 Section 10, Block 5, H & G.N. RR.CO. Survey,
 Abstract No. 241
 Reeves County, Texas

201 W. Wall St. - Suite 325
 Midland, Texas 79701
 Phone: (432) 218-7942
 TBPLS# 10194245

DRAWN BY: JMJ	DATE: 07-08-2017
CHECKED BY: TAN	DATE: 07-08-2017
PAGE: 2 OF 2	SCALE: 1" = 1000'

DWG. NO.	REVISION NO.
	0

The Resources I have Foster/Captain Energy/Big Deal 08-10 Lease Outline

REEVES COUNTY, TEXAS

METES AND BOUNDS DESCRIPTION

BEING the metes and bounds description of a 151.86 acre tract situated in SECTION NO. 08, BLOCK 5, H.&G.N.RR.CO. SURVEY, ABSTRACT NO. 926, Reeves County, Texas and in SECTION NO. 09, BLOCK 5, H.&G.N.RR.CO. SURVEY, ABSTRACT NO. 522, Reeves County, Texas.

Said metes and bounds being more particularly described as follows:

BEGINNING at a point of said SECTION 08, from which a Calculated Corner found for the Southeast corner of said SECTION NO. 08, said POINT OF BEGINNING having a TX-Central Zone 4203, NAD 83 coordinate value of Y:10492332.01, X:1308519.75;

THENCE: S 12°51'27" W, along the east line of said 151.86 acre tract, a distance of 5081.47 feet to a point;

THENCE: N 77°04'24" W, along the south line of said 151.86 acre tract, a distance of 662.87 feet to a point;

THENCE: N 12°49'51" E, along the west line of said 151.86 acre tract, a distance of 5080.36 feet to a point;

THENCE: N 12°51'20" E, along the west line of said 151.86 acre tract, a distance of 5550.65 feet to a point;

THENCE: S 77°02'31" E, a distance of 503.74 feet to a point;

THENCE: S 13°01'06" W, a distance of 174.69 feet to a point;

THENCE: S 69°42'27" W, a distance of 296.84 feet to a point;

THENCE: S 20°14'09" E, a distance of 383.00 feet to a point;

THENCE: N 69°35'37" E, a distance of 45.59 feet to a point;

THENCE: S 13°01'44" W, a distance of 84.47 feet to a point;

THENCE: S 19°37'54" E, a distance of 294.65 feet to a point;

THENCE: S 12°47'07" W, along the east line of said 151.86 acre tract, a distance of 4317.54 feet to a point

THENCE: S 12°51'27" W, along the east line of said 151.86 acre tract, a distance of 266.03 feet to the POINT OF BEGINNING.

Said boundary tract containing 6,615,021.60 square feet or 151.86 acres in SECTION NO. 08 & SECTION NO. 09.

Exhibit No. 10 D
O&G Docket No. 08-0304960
Date: July 7, 2017
Colgate Operating, LLC

NOTES:

- 1.) BEARINGS, DISTANCES, AREA AND COORDINATES SHOWN HEREON ARE GRID BASED ON "THE TEXAS COORDINATE SYSTEM OF 1983, CENTRAL ZONE" AS DETERMINED BY GPS OBSERVATIONS REFERENCED TO TRANSGLOBAL CONTROL POINT "SAM 3" (N: 10488004.16, E: 1323111.21) WHERE THE CONVERGENCE ANGLE IS 01°36'26.5" AND THE COMBINED SCALE FACTOR IS 0.99978737. ELEVATIONS ARE NAVD88 (GEOID 128).
- 2.) THIS PLAT WAS PREPARED WITHOUT THE BENEFIT OF A TITLE REPORT OR A REVIEW OF THE ABSTRACT OF TITLE. OWNERSHIP INFORMATION WAS PROVIDED BY OTHERS.
- 3.) THE PLAT WAS PREPARED FOR TEXAS RAILROAD COMMISSION PERMITTING PURPOSES ONLY. SEE DOCUMENTS AND ELECTRONIC DATA FILED IN THE OFFICE OF TRANSGLOBAL SERVICES, LLC FOR COMPLETE RECONSTRUCTION OF THESE SECTIONS OR BLOCKS.
- 4.) THIS PLAT AND THE SURVEY IT IS BASED ON DO NOT CONSTITUTE AN:
 - a. ENVIRONMENTAL ASSESSMENT
 - b. WETLANDS DETERMINATION
 - c. SUBSURFACE DETERMINATION



Lease Overview Exhibit
RAMSES 08-09
 Tract 1 - 76.46 Acres
 Section 08, Block 5, H.&G.N.RR.CO. Survey,
 Abstract No. 926

Tract 2 - 76.40 Acres
 Section 09, Block 5, H.&G.N.RR.CO. Survey,
 Abstract No. 522
 Reeves County, Texas

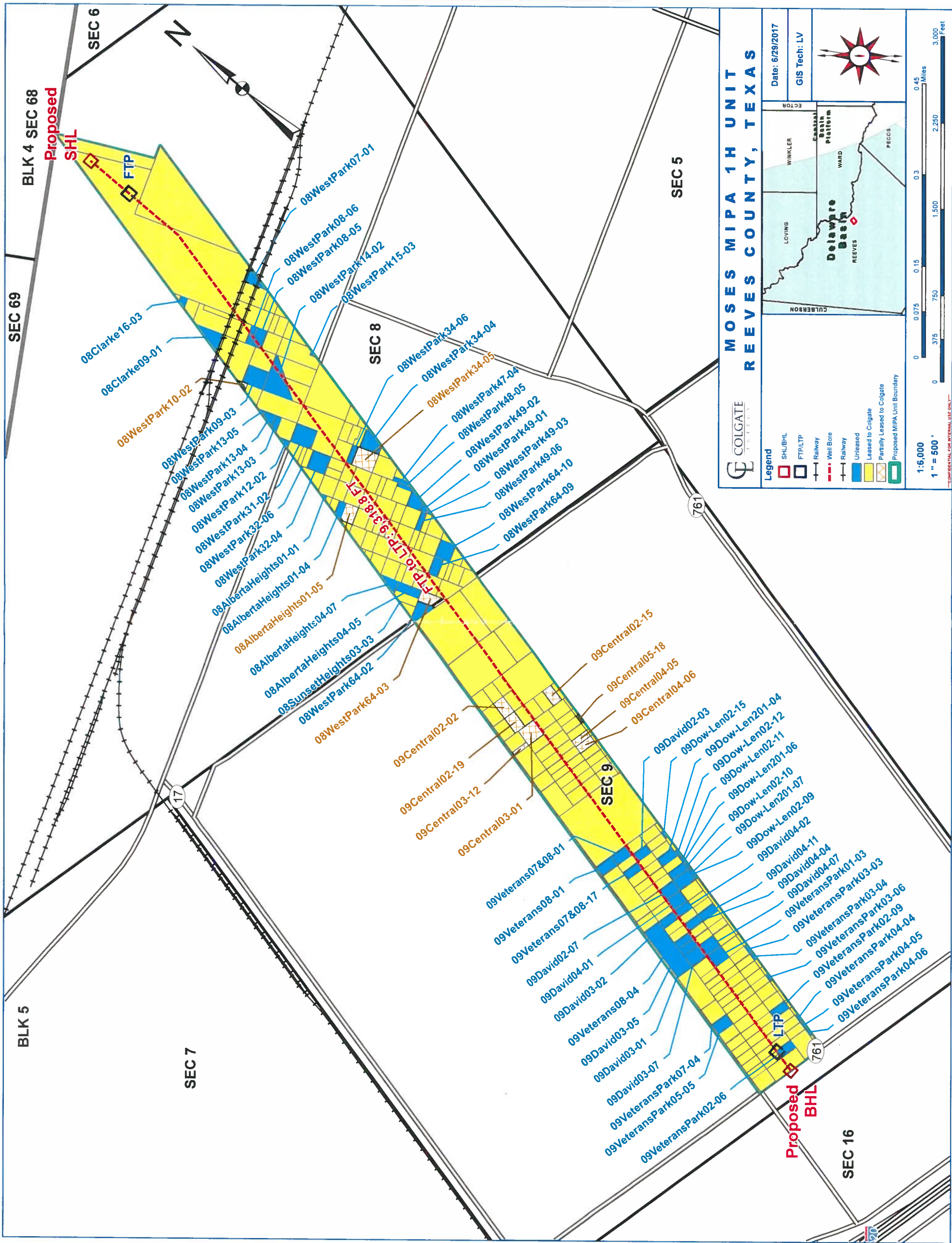
TRANSGLOBAL SERVICES LLC
 201 W. Wall St. - Suite 325
 Midland, Texas 79701
 Phone: (432) 218-7942
 TBPLS# 10194245

DRAWN BY: DHR	DATE: 07-08-2017
CHECKED BY: TAN	DATE: 07-08-2017
PAGE: 2 OF 2	SCALE: 1" = 1000'

DWG. NO.
Title Reserved from Future Copyright Energy/Plumbing 08-09 Lease 08-09

REVISION NO.
 0

Exhibit No. 6A
 O&G Docket No. 08-0304960
 Date: July 7, 2017
 Colgate Operating, LLC



COLGATE TEXAS

**MOSES MIPA 1H UNIT
 REEVES COUNTY, TEXAS**

Date: 6/29/2017
 GIS Tech: LV

Scale: 1" = 500'
 1:6,000

0 375 750 1,500 2,250 3,000 Feet

0 0.075 0.15 0.3 0.45 Miles

Legend

- SHL/BHL
- FTP/LTP
- Railway
- Well Bore
- Railway
- Unleased
- Leased to Colgate
- Partially Leased to Colgate
- Proposed MIPA Unit Boundary

Delaware Basin

WARD

REEVES

LOVING

WINKLER

ECATOR

CULBERSON

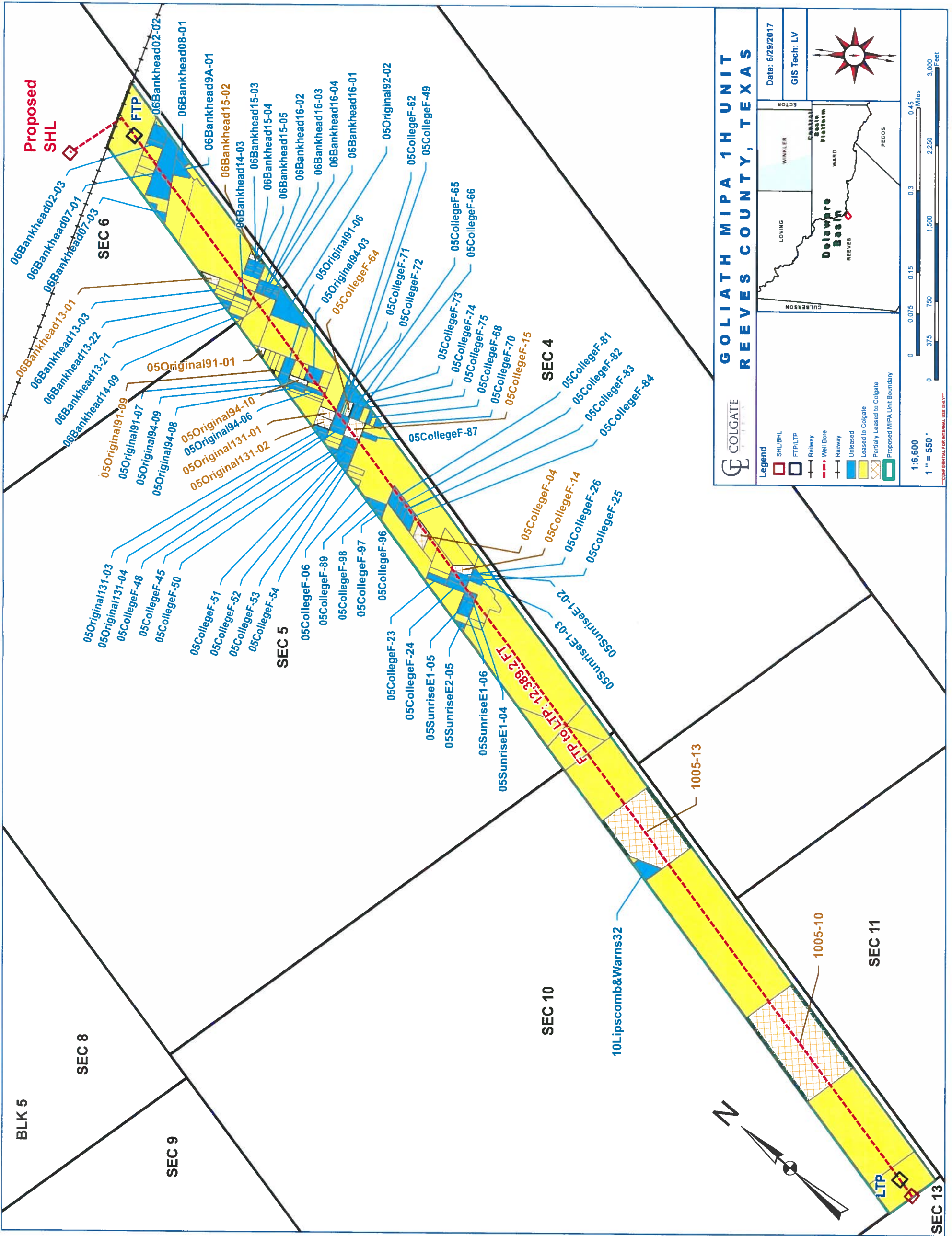
FEOS

Platform

Basin

CONFIDENTIAL FOR INTERNAL USE ONLY

Exhibit No. 6B
 O&G Docket No. 08-0304960
 Date: July 7, 2017
 Colgate Operating, LLC



**GOLIATH MIPA 1H UNIT
 REEVES COUNTY, TEXAS**

Date: 6/29/2017
 GIS Tech: LV

Legend

- SHL/BHL
- FTP/LTP
- Railway
- Well Bore
- Railway
- Unleased
- Leased to Colgate
- Partially Leased to Colgate
- Proposed MIPA Unit Boundary

Scale: 1:6,600
 1" = 550'

0 0.075 0.15 0.3 0.45 Miles
 0 375 750 1,500 2,250 3,000 Feet

Map of Reeves County showing Delaware Basin and Pecos Basin.

CONFIDENTIAL FOR INTERNAL USE ONLY

