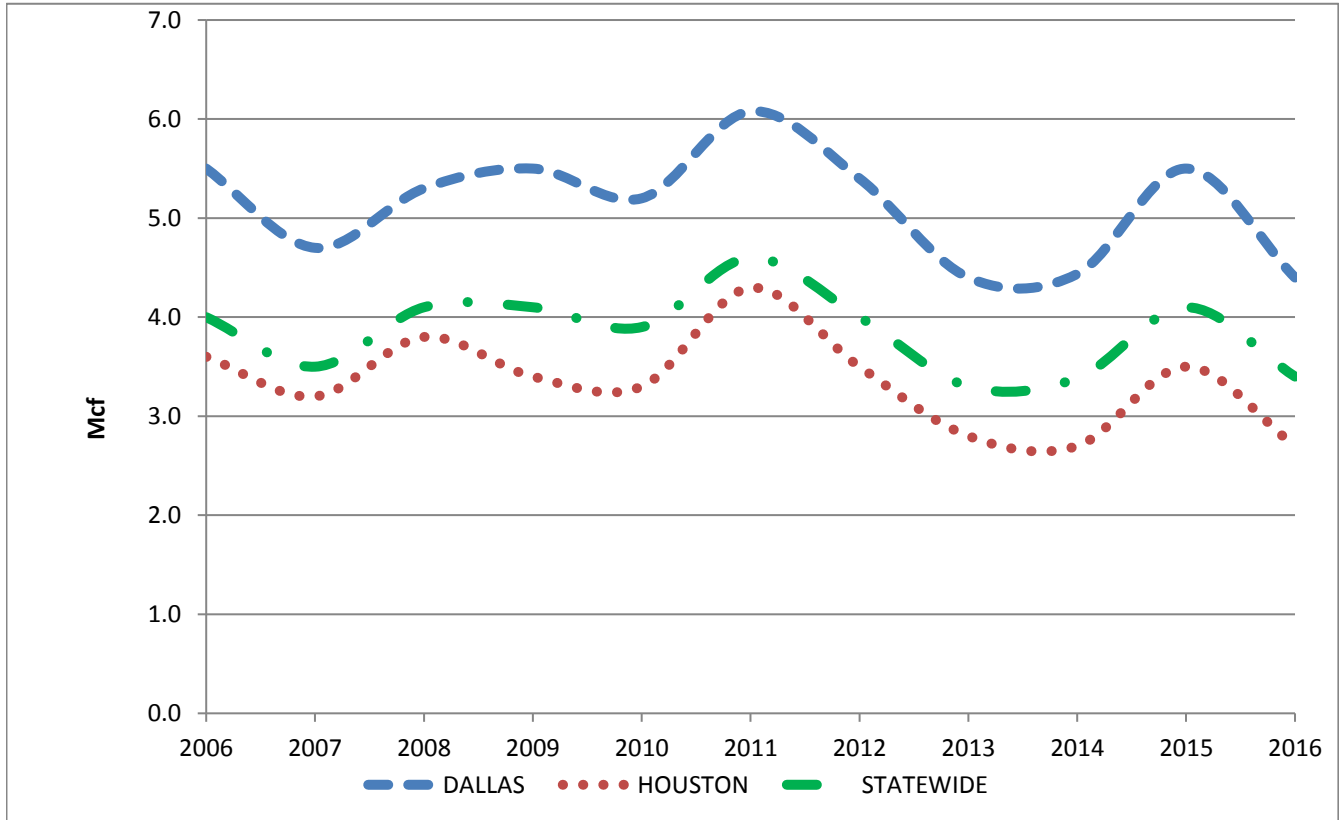


# RAILROAD COMMISSION OF TEXAS GAS SERVICES AVERAGE MONTHLY GAS CONSUMPTION (Mcf) PER RESIDENTIAL CUSTOMER



<u>YEAR</u>	<u>DALLAS</u>	<u>HOUSTON</u>	<u>STATEWIDE</u>
2006	5.5	3.6	4.0
2007	4.7	3.2	3.5
2008	5.3	3.8	4.1
2009	4.7	3.2	3.5
2010	5.2	3.3	3.9
2011	6.1	4.3	4.6
2012	5.4	3.5	4.0
2013	4.4	2.8	3.3
2014	6.3	4.3	4.6
2015	5.5	3.5	4.1
2016	4.4	2.7	3.4

SOURCE: COMPANY ANNUAL REPORTS