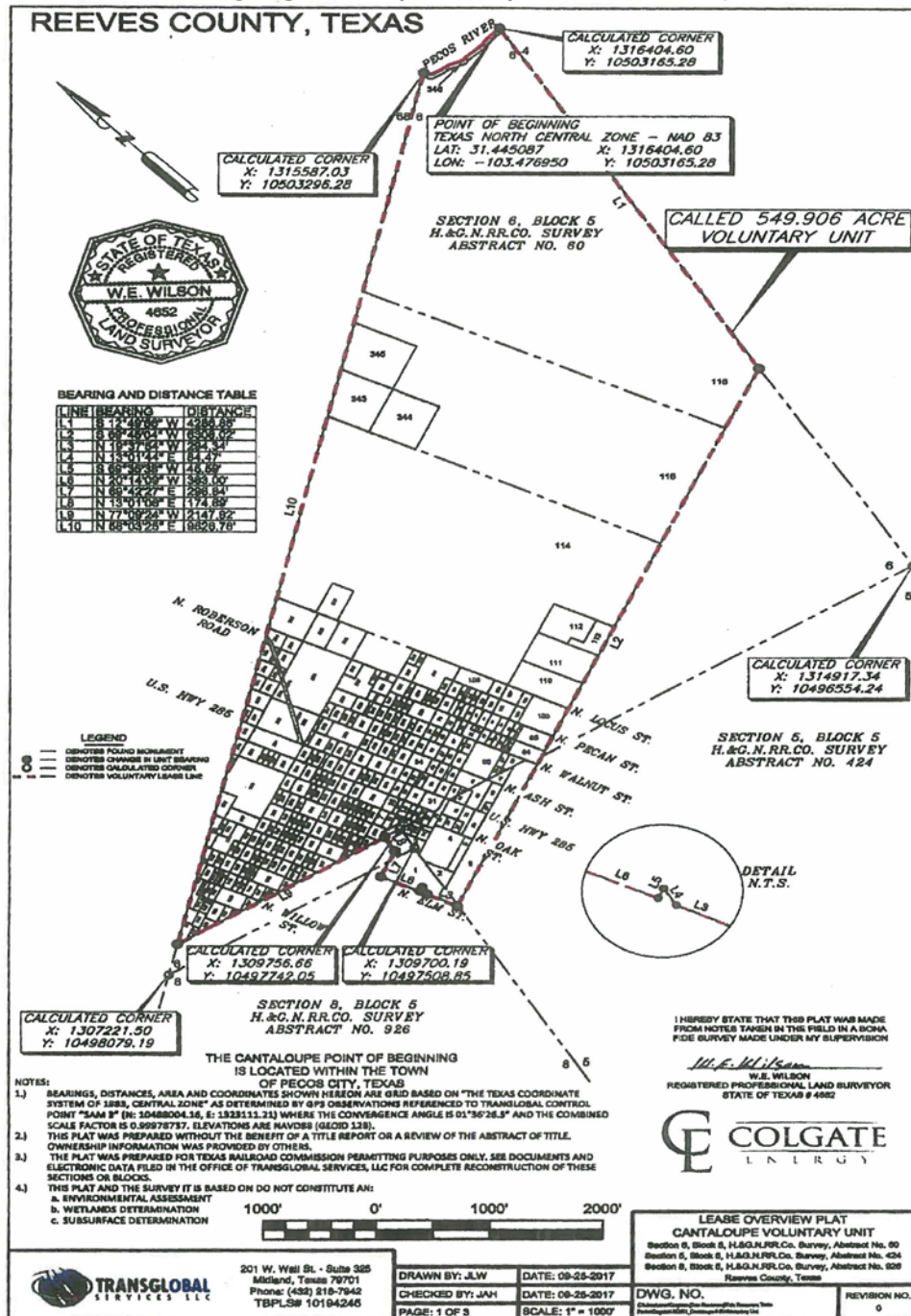


Appendix 2 O&G Docket No. 08-0316736 Colgate Operating, LLC

Exhibit "C"

Attached to and made part of that Designation of Unit made by COLGATE ENERGY, LLC designating the Cantaloupe 6 Voluntary Unit and dated October 1, 2017.



VOL 1488 PG 0384

APPENDIX 2
O&G Docket No. 08-0316736
February 4, 2019
Colgate Operating, LLC

Exhibit No. 10A
O&G Dkt. # 08-0316736, et al
Date: February 4, 2019
Colgate Operating, LLC

METES AND BOUNDS DESCRIPTION

BEING the metes and bounds description of a Called 549.906 acre tract situated in SECTION NO. 6, BLOCK 5, H & G.N.RR SURVEY, ABSTRACT NO. 60, Reeves County, Texas, SECTION NO. 5, BLOCK 5, H & G.N.RR SURVEY, ABSTRACT NO. 424, Reeves County, Texas and in SECTION NO. 8, BLOCK 5, H & G.N.RR SURVEY, ABSTRACT NO. 926, Reeves County, Texas

Said metes and bounds being more particularly described as follows:

BEGINNING at the calculated corner, Northeast corner hereof in the Pecos River, the Northeast corner of Section No. 6 Block 5 of the H. & G.N.RR SURVEY Abstract No. 60, the Northeast corner of herein described Called 549.906 acre tract POINT OF BEGINNING having a TX-CENTRAL ZONE 4203, NAD 83 coordinate value of Y:10503165.28, X:1316404.60

THENCE: S 12°49'56" W, along the Northeast line of said called 549.906 acre tract, a distance of 4286.85 feet to a point for the Southeast corner hereof,

THENCE: S 69°45'04" W, with the Southeast side of said called 549.906 acre tract, crossing N. Locust ST., N. Pecan ST., N. Walnut ST., N. Ash ST., U.S. Highway 285 and N. Oak ST., a distance of 6308.02 feet to a point for the most Southeasterly corner hereof,

THENCE: N 19°37'54" W, with the Northerly line of said called 549.906 acre tract, a distance of 294.34 feet to a point for an exterior corner hereof,

THENCE: N 13°01'44" E, 84.47 feet to a point for an exterior corner hereof,

THENCE: S 69°35'38" W, 45.59 feet to a point for an exterior corner hereof,

THENCE: N 20°14'09" W, with the Northerly line of said called 549.906 acre tract, a distance of 383.00 feet to a point for an exterior corner hereof

THENCE: N 69°42'27" E, with the Northeasterly line of said called 549.906 acre tract, a distance of 296.84 feet to a point for an exterior corner hereof,