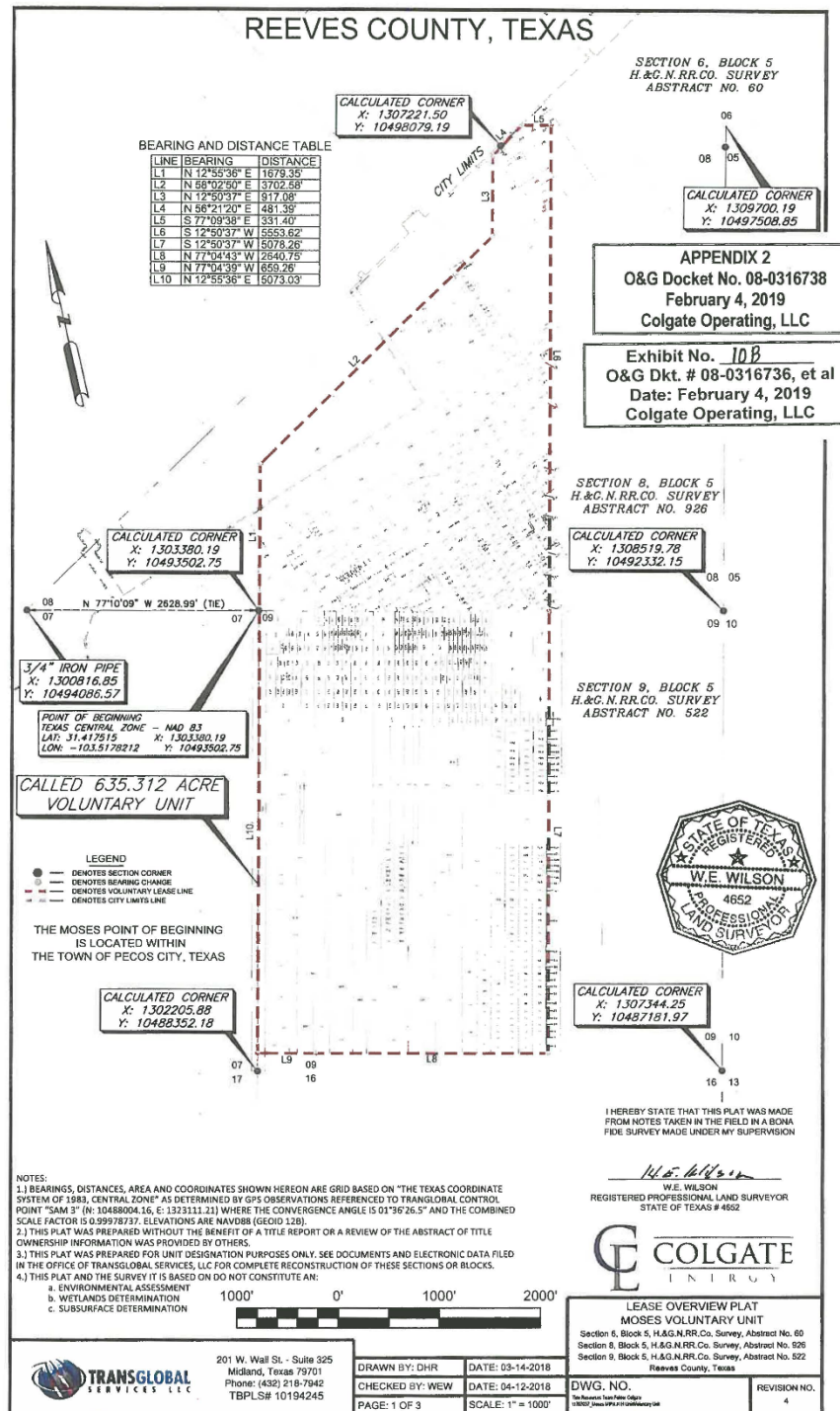


Appendix 2
O&G Docket No. 08-0316738
Colgate Operating, LLC



REEVES COUNTY, TEXAS

METES AND BOUNDS DESCRIPTION

BEING the metes and bounds description of a Called 635.312 acre tract situated in SECTION NO. 6, BLOCK 5, H & G.N.RR.CO. SURVEY, ABSTRACT NO. 60, Reeves County, Texas, SECTION NO. 8, BLOCK 5, H & G.N.RR.CO. SURVEY, ABSTRACT NO. 926, Reeves County, Texas and in SECTION NO. 9, BLOCK 5, H & G.N.RR.CO. SURVEY, ABSTRACT NO. 522, Reeves County, Texas

Said metes and bounds being more particularly described as follows:

BEGINNING at a point in the South boundary line of said SECTION NO. 8, from which a 3/4" Iron Pipe found for the Southwest corner of said SECTION NO. 8, bears N 77°10'09" W, a distance of 2628.99 feet (TIE), said POINT OF BEGINNING having a TX-CENTRAL ZONE 4203, NAD 83 coordinate value of X:1303380.19, Y:10493502.75,

THENCE: N 12°55'36" E, along the West line of said called 635.312 acre tract, a distance of 1679.35 feet to a point;

THENCE: N 58°02'50" E, a distance of 3702.58 feet to a point;

THENCE: N 12°50'37" E, along the West line of said called 635.312 acre tract, a distance of 917.08 feet to a point;

THENCE: N 56°21'20" E, a distance of 481.39 feet to a point;

THENCE: S 77°09'38" E, along the North line of said called 635.312 acre tract, a distance of 331.40 feet to a point;

THENCE: S 12°50'37" W, along the East line of said called 635.312 acre tract, a distance of 5553.62 feet to a point;

THENCE: S 12°50'37" W, along the East line of said called 635.312 acre tract, a distance of 5078.26 feet to a point;

THENCE: N 77°04'43" W, along the South line of said called 635.312 acre tract, a distance of 2640.75 feet to a point;

THENCE: N 77°04'39" W, along the South line of said called 635.312 acre tract, a distance of 659.26 feet to a point;

THENCE: N 12°55'36" E, along the West line of said called 635.312 acre tract, a distance of 5073.03 feet to the POINT OF BEGINNING;

Said boundary tract containing 27,674,190.72 square feet or 635.312 acres in SECTION NO. 6, SECTION NO. 8, & SECTION NO. 9.

NOTES:

- 1.) BEARINGS, DISTANCES, AREA AND COORDINATES SHOWN HEREON ARE GRID BASED ON "THE TEXAS COORDINATE SYSTEM OF 1983, CENTRAL ZONE" AS DETERMINED BY GPS OBSERVATIONS REFERENCED TO TRANSGLOBAL CONTROL POINT "SAM 3" (N: 10488004.16, E: 1323111.21) WHERE THE CONVERGENCE ANGLE IS 01°36'26.5" AND THE COMBINED SCALE FACTOR IS 0.99978737. ELEVATIONS ARE NAVD88 (GEOID 12B).
- 2.) THIS PLAT WAS PREPARED WITHOUT THE BENEFIT OF A TITLE REPORT OR A REVIEW OF THE ABSTRACT OF TITLE OWNERSHIP INFORMATION WAS PROVIDED BY OTHERS.
- 3.) THIS PLAT WAS PREPARED FOR UNIT DESIGNATION PURPOSES ONLY. SEE DOCUMENTS AND ELECTRONIC DATA FILED IN THE OFFICE OF TRANSGLOBAL SERVICES, LLC FOR COMPLETE RECONSTRUCTION OF THESE SECTIONS OR BLOCKS.
- 4.) THIS PLAT AND THE SURVEY IT IS BASED ON DO NOT CONSTITUTE AN:
 - a. ENVIRONMENTAL ASSESSMENT
 - b. WETLANDS DETERMINATION
 - c. SUBSURFACE DETERMINATION



TRANSGLOBAL
SERVICES LLC

201 W. Wall St. - Suite 325
Midland, Texas 79701
Phone: (432) 218-7942
TBPLS# 10194245

DRAWN BY: DHR	DATE: 03-14-2018
CHECKED BY: WEW	DATE: 04-12-2018
PAGE: 2 OF 3	SCALE: 1" = 1000'



LEASE OVERVIEW PLAT
MOSES VOLUNTARY UNIT
Section 6, Block 5, H.&G.N.RR.Co. Survey, Abstract No. 60
Section 8, Block 5, H.&G.N.RR.Co. Survey, Abstract No. 926
Section 9, Block 5, H.&G.N.RR.Co. Survey, Abstract No. 522
Reeves County, Texas

DWG. NO.

This document is a Team Folder Colgate
11701037_Moses SDA #14 Unit/Voluntary Unit

REVISION NO.

4