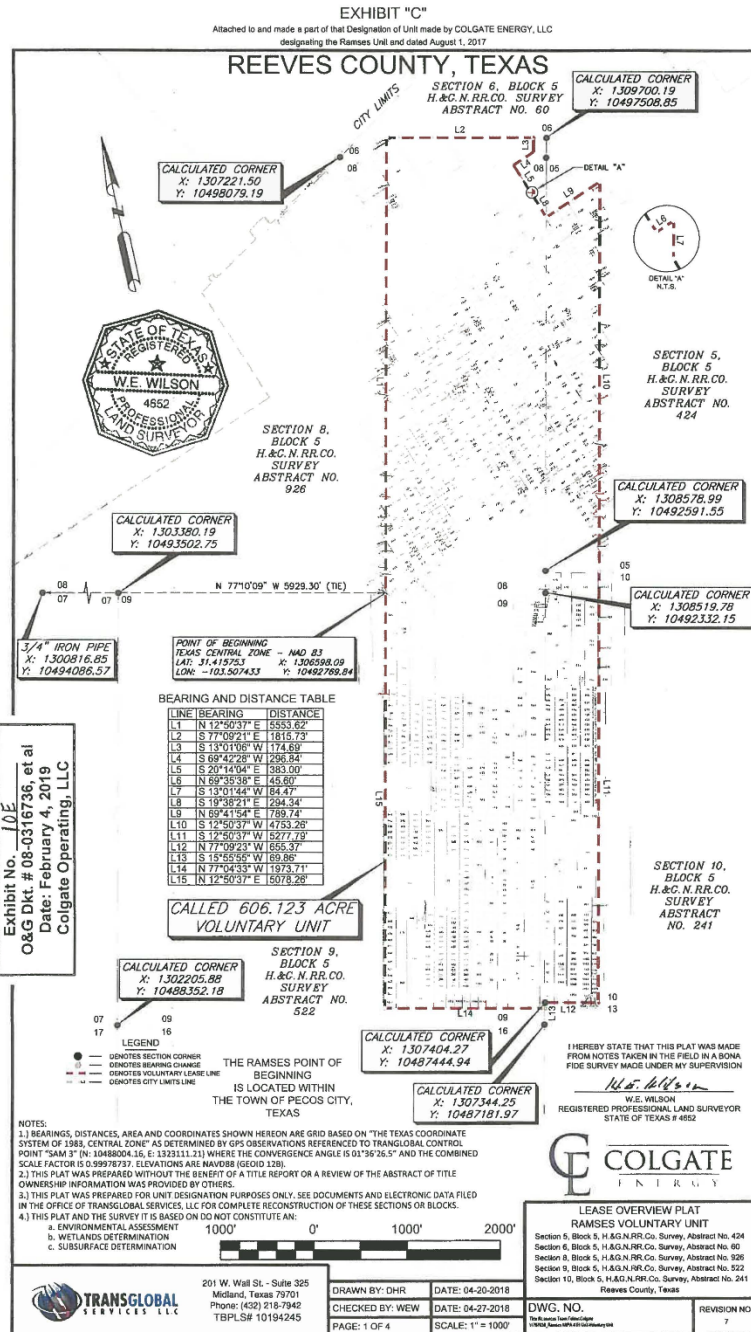


[illegible]

Appendix 2 O&G Docket No. 08-0316752 Colgate Operating, LLC



APPENDIX 2
O&G Docket No. 08-0316752
February 4, 2019
Colgate Operating, LLC

REEVES COUNTY, TEXAS

METES AND BOUNDS DESCRIPTION

BEING the metes and bounds description of a Called 606.123 acre tract situated in SECTION NO. 5, BLOCK 5, H & G.N.RR.CO. SURVEY, ABSTRACT NO. 424, SECTION NO. 6, BLOCK 5, H & G.N.RR.CO. SURVEY, ABSTRACT NO. 60, SECTION NO. 8, BLOCK 5, H & G.N.RR.CO. SURVEY, ABSTRACT NO. 926, SECTION NO. 9, BLOCK 5, H & G.N.RR.CO. SURVEY, ABSTRACT NO. 522, and in SECTION NO. 10, BLOCK 5, H & G.N.RR.CO. SURVEY, ABSTRACT NO. 241, Reeves County, Texas

Said metes and bounds being more particularly described as follows:

BEGINNING at a point in the South boundary line of said SECTION NO. 8, from which a 3/4" Iron Pipe found for the Southwest corner of said SECTION NO. 8, bears N 77°10'09" W, a distance of 5929.30 feet (TIE), said POINT OF BEGINNING having a TX-CENTRAL ZONE 4203, NAD 83 coordinate value of X:1306598.09, Y:10492769.84,

THENCE: N 12°50'37" E, along the West line of said called 606.123 acre tract, a distance of 5553.62 feet to a point;

THENCE: S 77°09'21" E, along the North line of said called 606.123 acre tract, a distance of 1815.73 feet to a point;

THENCE: S 13°01'06" W, a distance of 174.69 feet to a point;

THENCE: S 69°42'28" W, a distance of 296.84 feet to a point;

THENCE: S 20°14'04" E, a distance of 383.00 feet to a point;

THENCE: N 69°35'38" E, a distance of 45.60 feet to a point;

THENCE: S 13°01'44" W, a distance of 84.47 feet to a point;

THENCE: S 19°38'21" E, a distance of 294.34 feet to a point;

THENCE: N 69°41'54" E, a distance of 789.74 feet to a point;

THENCE: S 12°50'37" W, along the East line of said called 606.123 acre tract, a distance of 4753.26 feet to a point;

THENCE: S 12°50'37" W, along the East line of said called 606.123 acre tract, a distance of 5277.79 feet to a point;

THENCE: N 77°09'23" W, along the South line of said called 606.123 acre tract, a distance of 655.37 feet to a point;

THENCE: S 15°55'55" W, a distance of 69.86 feet to a point;

THENCE: N 77°04'33" W, along the South line of said called 606.123 acre tract, a distance of 1973.71 feet to a point;

THENCE: N 12°50'37" E, along the West line of said called 606.123 acre tract, a distance of 5078.26 feet to the POINT OF BEGINNING;

Said boundary tract containing 26,402,717.88 square feet or 606.123 acres in SECTION NO. 5, SECTION NO. 6, SECTION NO. 8, SECTION NO. 9, & SECTION NO. 10.

NOTES:

- 1.) BEARINGS, DISTANCES, AREA AND COORDINATES SHOWN HEREON ARE GRID BASED ON "THE TEXAS COORDINATE SYSTEM OF 1983, CENTRAL ZONE" AS DETERMINED BY GPS OBSERVATIONS REFERENCED TO TRANSGLOBAL CONTROL POINT "SAM 3" (N: 10488004.16, E: 1323111.21) WHERE THE CONVERGENCE ANGLE IS 01°36'26.5" AND THE COMBINED SCALE FACTOR IS 0.99978737. ELEVATIONS ARE NAVD88 (GEOID 128).
- 2.) THIS PLAT WAS PREPARED WITHOUT THE BENEFIT OF A TITLE REPORT OR A REVIEW OF THE ABSTRACT OF TITLE OWNERSHIP INFORMATION WAS PROVIDED BY OTHERS.
- 3.) THIS PLAT WAS PREPARED FOR UNIT DESIGNATION PURPOSES ONLY. SEE DOCUMENTS AND ELECTRONIC DATA FILED IN THE OFFICE OF TRANSGLOBAL SERVICES, LLC FOR COMPLETE RECONSTRUCTION OF THESE SECTIONS OR BLOCKS.
- 4.) THIS PLAT AND THE SURVEY IT IS BASED ON DO NOT CONSTITUTE AN:
 - a. ENVIRONMENTAL ASSESSMENT
 - b. WETLANDS DETERMINATION
 - c. SUBSURFACE DETERMINATION



201 W. Wall St. - Suite 325
Midland, Texas 79701
Phone: (432) 218-7942
TBPLS# 10194245

DRAWN BY: DHR	DATE: 04-20-2018
CHECKED BY: WEW	DATE: 04-27-2018
PAGE: 2 OF 4	SCALE: 1" = 1000'



LEASE OVERVIEW PLAT RAMSES VOLUNTARY UNIT	
Section 5, Block 5, H.&G.N.RR.Co. Survey, Abstract No. 424 Section 6, Block 5, H.&G.N.RR.Co. Survey, Abstract No. 60 Section 8, Block 5, H.&G.N.RR.Co. Survey, Abstract No. 926 Section 9, Block 5, H.&G.N.RR.Co. Survey, Abstract No. 522 Section 10, Block 5, H.&G.N.RR.Co. Survey, Abstract No. 241 Reeves County, Texas	
DWG. NO. <small>110194245_Ramsey MSPA Unit Voluntary Unit</small>	REVISION NO. 7