

**EXHIBIT "B"**

**METES AND BOUNDS DESCRIPTION  
96.32 ACRES OF LAND  
SITUATED IN TARRANT COUNTY, TEXAS**

**BEING** 96.32 acres of land situated in the R. Cross Survey, Abstract 304, and in the B.E. Waller Survey, Abstract 1659 of Tarrant County, Texas, and being a portion of Riverside Addition, third filing, and being a portion of The Page Company's East Side Addition first and second filing, and being all of the KAB Air Addition, and also being all of the Kendall Addition, all being recorded in the Tarrant County Deed Records, said 96.32 acres to be more particularly described by metes and bounds as follows;

**BEGINNING** at the intersection of the centerline of Beach Street and the centerline of First Street ;

**THENCE** South 00°21' West, for a distance of 724.7 feet, with the centerline of the above mentioned Beach Street to a point of intersection with the centerline of Fourth Street;

**THENCE** South 89°56' West, for a distance of 270.2 feet, with the centerline of the above mentioned First Street, to a point of intersection with the centerline of Gross Street;

**THENCE** South 00°28' East, for a distance of 184.8 feet, with the centerline of the above mentioned Gross Street to a point;

**THENCE** North 89°04' East, for a distance of 131.5 feet, with the centerline of an existing 20 foot wide alley to a point at the end of said alley;

**THENCE** South 00°06' East, for a distance of 188.4 feet, to a point of intersection with the centerline of Galvez Avenue;

**THENCE** South 88°21' West, for a distance of 129.9 feet, with the centerline of the above mentioned Galvez Avenue to a point of intersection with the above mentioned Gross Street;

**THENCE** South 00°42' East, for a distance of 109.0 feet, with the centerline of the above mentioned Gross Street to a point;

**THENCE** South 89°54' East, for a distance of 129.8 feet, across Lots 1 and 2 of Block 16 of the above referenced Page Company's East Side Addition, Second Filing to a point in the east line of the above mentioned Lot 2;

**THENCE** South 00°27' East, for a distance of 159.1 feet, with the east line of the above mentioned Lot 2, and with the east line of Lot 14 of Block 16 of said Page Company's East Side Addition, Second Filing to a point in east line of the above mentioned Lot 14;

**THENCE** North 89°50' West, for a distance of 132.2 feet, to a point in the centerline of the above mentioned Gross Street;

**THENCE** South 00°25' West, for a distance of 285.6 feet, with the centerline of said Gross Street to a point;

**THENCE** South 89°58' West, for a distance of 1832.2 feet, with the centerline of a 20 foot alley, to a point in the centerline of Denair Avenue;

**THENCE** North 00°32' West, for a distance of 176.3 feet, with the centerline of the above mentioned Denair Avenue, to a point of intersection with the centerline of Lawnwood Street;

**THENCE** South 89°51' West, for a distance of 435.5 feet, with the centerline of the above mentioned Lawnwood Street to a point;

**THENCE** North 00°03' East, for a distance of 170.0 feet, with the west line of Lot 21 of Block 42 of the above referenced Riverside Addition, Third Filing, to the northwest corner of said Lot 21, and being in the south line of a 20 foot alley;

**THENCE** South 89°51' West, for a distance of 50.0 feet, with the south line of alley to a point;

**THENCE** North 00°03' East, for a distance of 200.0 feet, with the west line of Lot 6 of Block 42 of the above mentioned Riverside Addition, Third Filing, to a point in the centerline of the above mentioned Galvez Avenue;

**THENCE** South 89°51' West, for a distance of 273.0 feet, with the centerline of the above mentioned Galvez Avenue, to a point of intersection with Covello Avenue;

**THENCE** North 00°15' West, for a distance of 913.9 feet, with the centerline of the above mentioned Covello Avenue to a point;

**THENCE** South 89°44' East, for a distance of 285.7 feet, with the centerline of a 20 foot alley, to a point;

**THENCE** North 00°16' East, for a distance of 51.8 feet, with the west line of Lot 5A of Block 11 of the above mentioned Riverside Addition, Third Filing, to the northwest corner of said Lot 5A;

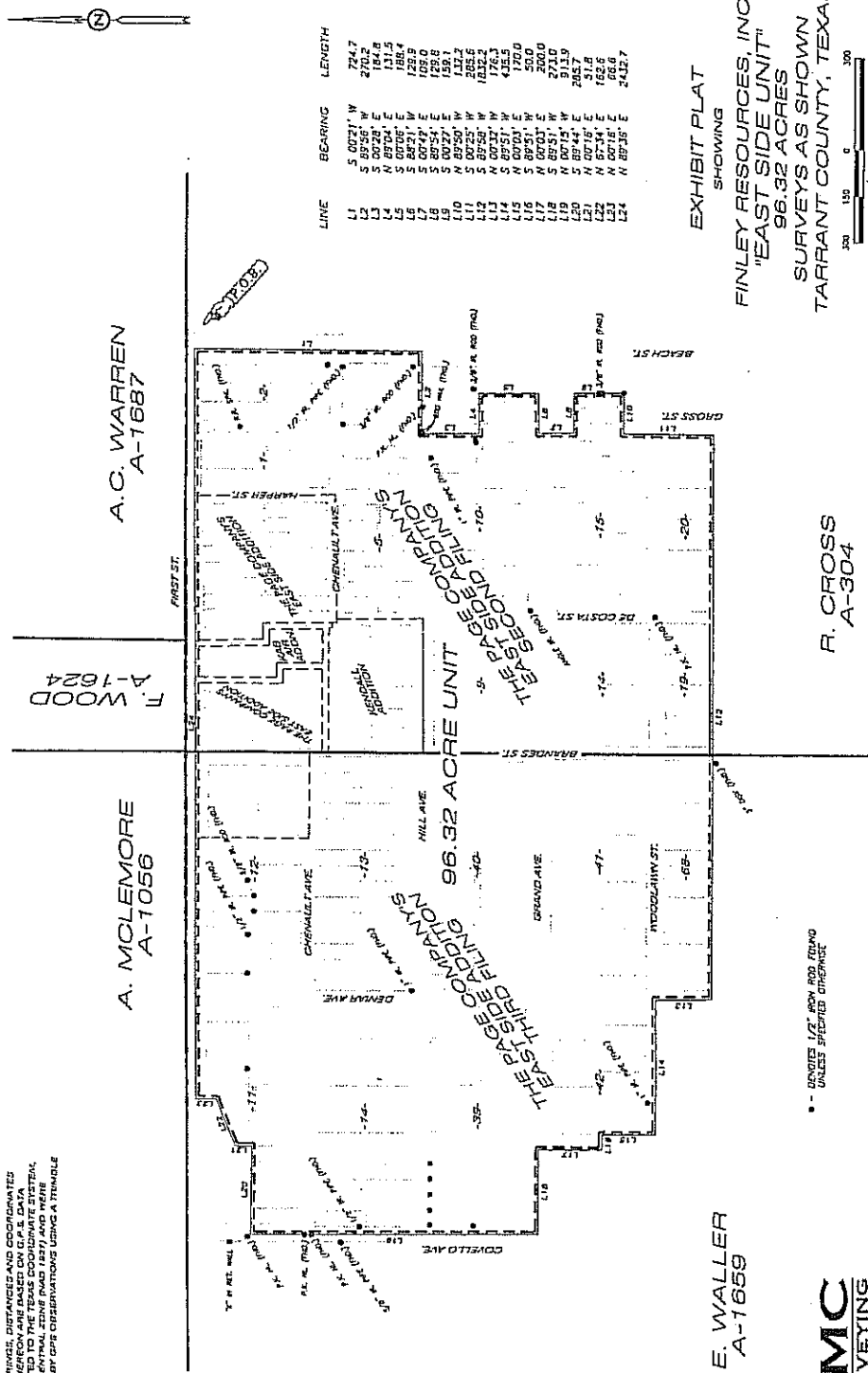
**THENCE** North 67°34" East, for a distance of 162.6 feet, with the north line of the above mentioned Lot 5A, and with the north line of Lots 6A and 7A of Block 11 of the above mentioned Riverside Addition, Third Filing, to the northeast corner of said Lot 7A, and being in the West line of Lot 8 of Block 11 in said Riverside Addition, Third Filing;

**THENCE** North 00°16' East, for a distance of 66.6 feet, with the west line of the above mentioned Lot 8, to a point in the centerline of First street;

**THENCE** North 89°36' East, for a distance of 2432.7 feet, back to the place of beginning containing 96.32 Acres, more or less.

NOTE: Acres shown herein are based on information provided by others. This plat shows hereon does not represent a boundary survey.

NOTES:  
 1) ALL BEARINGS, DISTANCES AND COORDINATES  
 WERE OBTAINED FROM THE ORIGINAL SURVEY  
 CONDUCTED TO THE TEXAS COORDINATE SYSTEM,  
 NORTH CENTRAL ZONE (NAD 83) AND WERE  
 DERIVED BY GPS OBSERVATIONS USING A TRIMBLE  
 PRO RPL.



LINE	BEARING	LENGTH
L1	S 00°31' W	274.7
L2	S 89°55' W	270.3
L3	S 00°28' E	184.8
L4	N 89°04' E	131.5
L5	S 89°59' W	186.4
L6	S 00°41' W	125.0
L7	S 00°41' E	103.0
L8	S 89°55' E	129.8
L9	S 00°27' E	158.1
L10	S 00°25' W	285.6
L11	S 89°25' W	285.6
L12	S 89°50' E	183.2
L13	N 00°37' W	176.3
L14	S 00°31' E	413.5
L15	S 89°51' W	50.0
L16	N 00°37' E	200.0
L17	S 89°51' W	273.0
L18	S 89°51' W	273.0
L19	S 89°44' E	285.7
L20	S 89°44' E	285.7
L21	N 00°16' E	31.8
L22	N 87°44' E	162.6
L23	N 87°44' E	162.6
L24	N 89°35' E	60.6
		242.7

EXHIBIT PLAT  
 SHOWING  
 FINLEY RESOURCES, INC.  
 "EAST SIDE UNIT"  
 96.32 ACRES  
 SURVEYS AS SHOWN  
 TARRANT COUNTY, TEXAS



\* - DIMENSIONS 1/2" AND ROD FINDING  
 UNLESS SPECIFIED OTHERWISE

B. E. WALLER  
 A-1659

**RMC**  
 SURVEYING  
 12559 C. R. 192  
 TYLER, TX. 75703  
 (903) 939-8860

DRAWN BY: T.J.C. CHECKED BY: R.L.M. FE/PS: 83/92 JOB NO.: 70253 DATE: 7/10/07 FILE: NEW-UNIT

FINLEY RESOURCES, INC.  
 Case No. 09-0252373  
 August 24, 2007  
 Exhibit No. 3