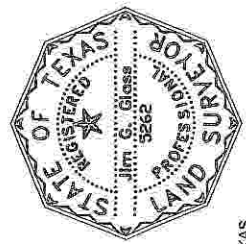




STATE OF TEXAS



I, Jim G. Glass, Registered Professional Land Surveyor, do hereby certify the above plat to be true and correct to the best of my knowledge.
 Harry L. Johnson & Associates
 ELS Surveying & Mapping, Inc.

Registered Professional Land Surveyor No. 5262

September 24, 2009.
 The location shown hereon was staked from tract lines as evidenced by occupation. Distances shown are not intended to be definitive in establishing title boundaries. The acreage shown hereon were provided by others. Bearings are based on NAD 27 State Plane Coordinates.

**FOR THE EXCLUSIVE USE OF
 XTO ENERGY INC.**

UNIT PLAT
XTO ENERGY INC.
TEXAS STEEL A UNIT
TARRANT COUNTY, TEXAS
SCALE: 1" = 500'
 From the Office of ELS Surveying & Mapping, Inc./
 Harry L. Johnson & Associates - Aledo, Texas

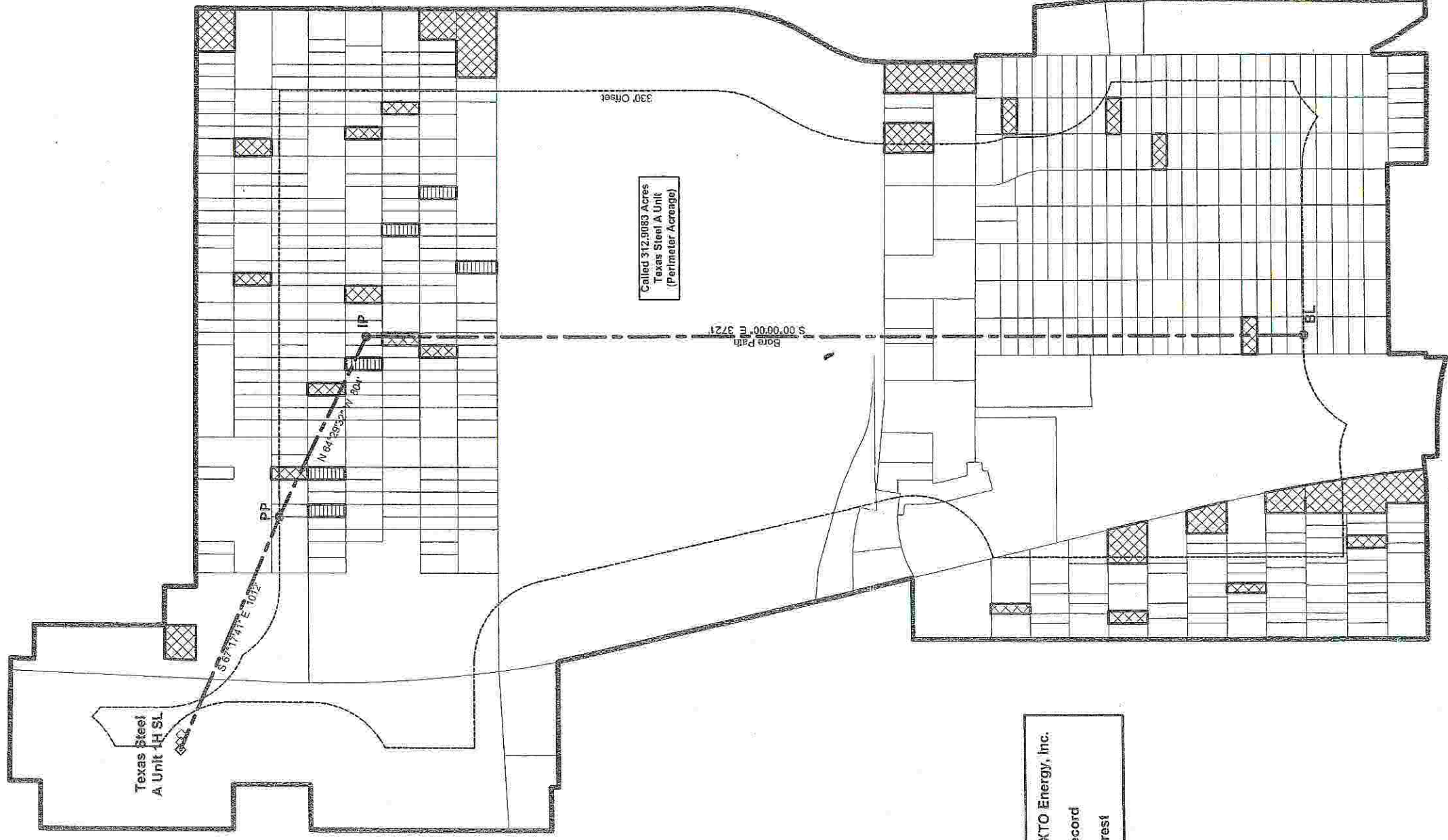
Appendix 3

Exhibit No. 14
 O&G Docket Nos. 09-0260202

Date: October 5, 2009
 XTO ENERGY INC.

Job No. 274098

Map No. T-727_Alternate_2



Leased to XTO Energy, Inc.
 Open of Record
 Partial Interest



STATE OF TEXAS

I, Jim G. Glass, Registered Professional Land Surveyor, do hereby certify the above plat to be true and correct to the best of my knowledge.

Harry L. Johnson & Associates
ELS Surveying & Mapping, Inc.

Registered Professional Land Surveyor No. 5262

September 25, 2009.

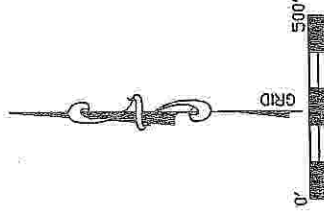
The location shown hereon was staked from tract lines as evidenced by occupation. Distances shown are not intended to be definitive in establishing title boundaries. The acreage shown hereon were provided by others. Bearings are based on NAD 27 State Plane Coordinates.

**FOR THE EXCLUSIVE USE OF
XTO ENERGY INC.**

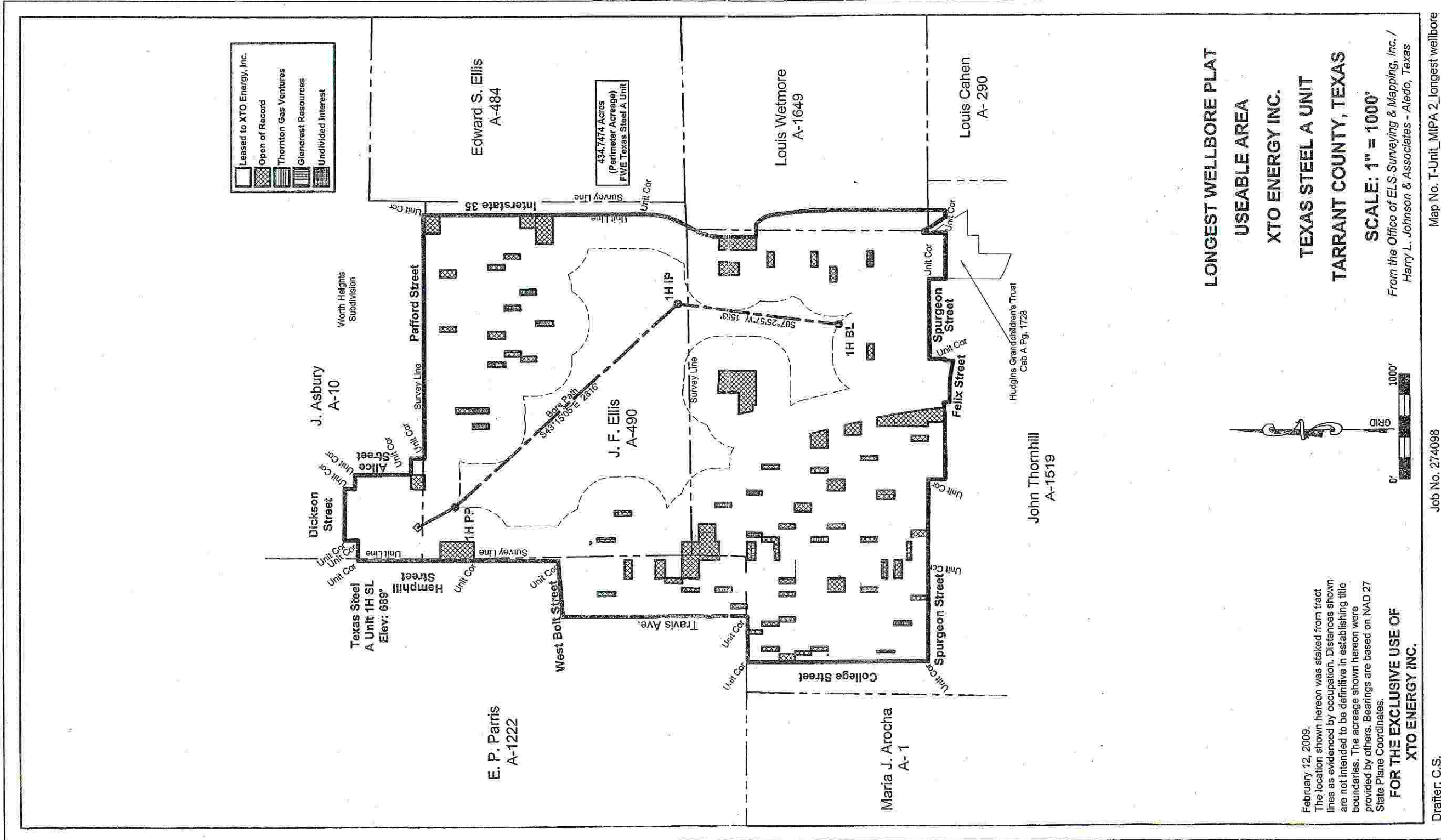
Exhibit No. **10**
 O & G Docket No. 09-0260202
 O & G Docket No. 09-0261248
 Reopened Hearing
 Date: October 5, 2009
 XTO Energy Inc.

MIPA EXHIBIT
XTO ENERGY INC.
TEXAS STEEL A UNIT
TARRANT COUNTY, TEXAS

SCALE: 1" = 500'
 From the Office of ELS Surveying & Mapping, Inc.
 Harry L. Johnson & Associates - Aledo, Texas



Appendix 4



February 12, 2009.
 The location shown hereon was staked from tract lines as evidenced by occupation. Distances shown are not intended to be definitive in establishing title boundaries. The acreage shown hereon were provided by others. Bearings are based on NAD 27 State Plane Coordinates.
**FOR THE EXCLUSIVE USE OF
 XTO ENERGY INC.**

Drafter: C.S.

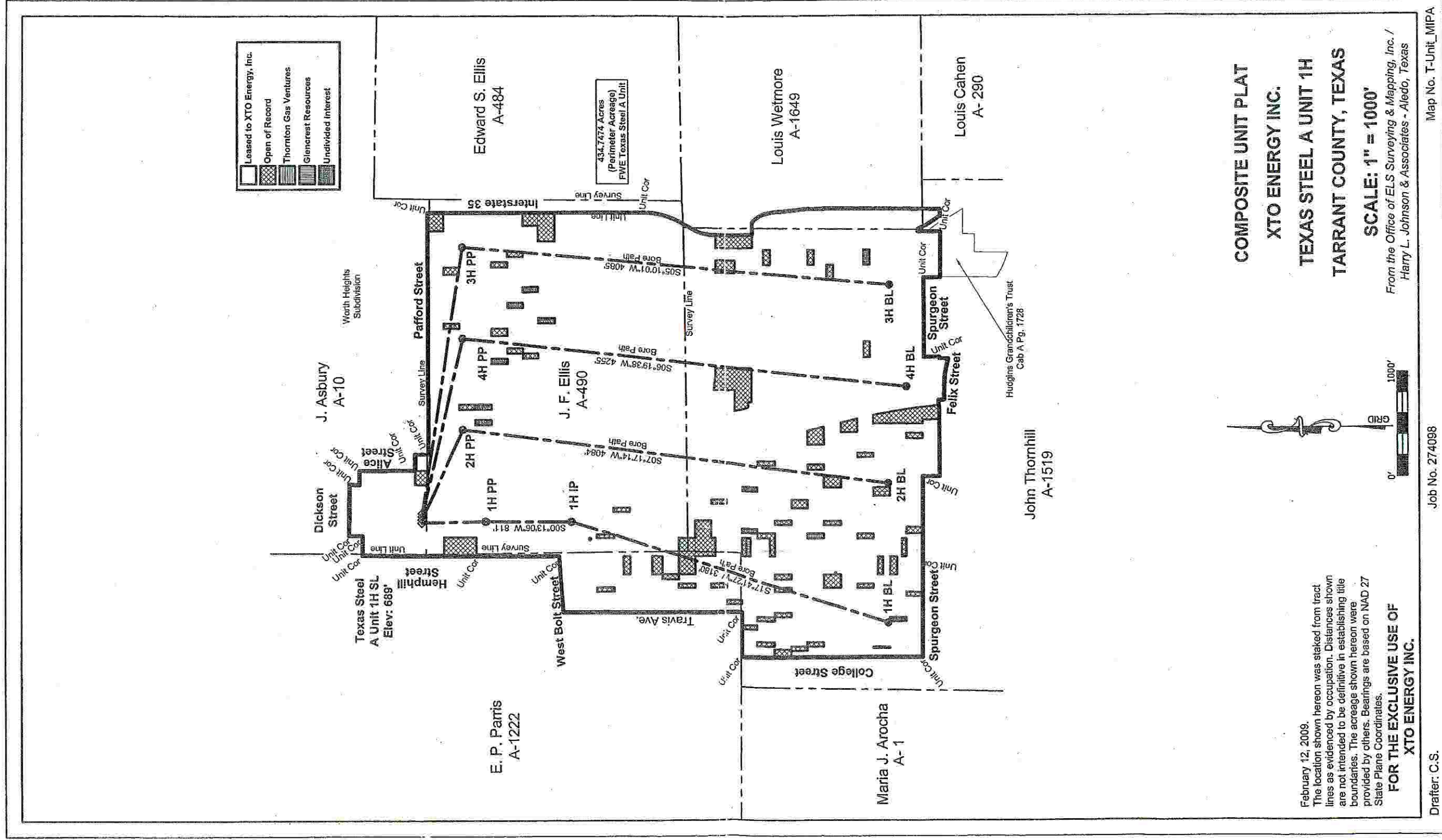
Job No. 274098

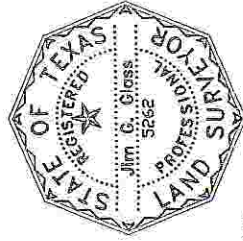
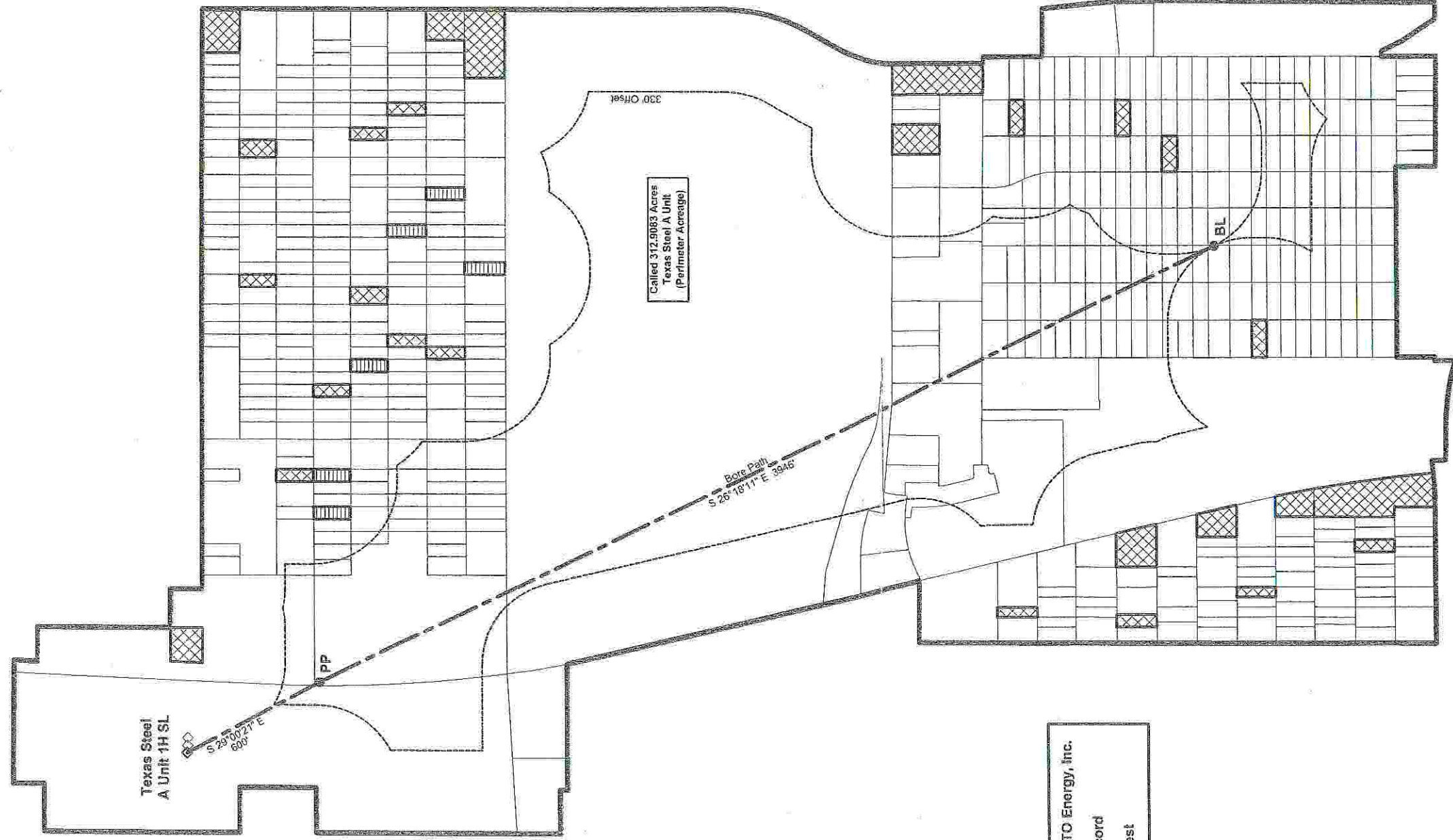
Map No. T-Unit_MIPA 2_longest wellbore

**LONGEST WELLBORE PLAT
 USEABLE AREA
 XTO ENERGY INC.
 TEXAS STEEL A UNIT
 TARRANT COUNTY, TEXAS**

SCALE: 1" = 1000'

From the Office of ELS Surveying & Mapping, Inc. /
 Harry L. Johnson & Associates - Alledo, Texas





STATE OF TEXAS

I, Jim G. Glass, Registered Professional Land Surveyor, do hereby certify the above plat to be true and correct to the best of my knowledge.

Harry L. Johnson & Associates
ELS Surveying & Mapping, Inc.

Registered Professional Land Surveyor No. 5262

September 25, 2009.
The location shown hereon was staked from tract lines as evidenced by occupation. Distances shown are not intended to be definitive in establishing title boundaries. The acreage shown hereon were provided by others. Bearings are based on NAD 27 State Plane Coordinates.

**FOR THE EXCLUSIVE USE OF
XTO ENERGY INC.**

Exhibit No. **12**

O & G Docket No. 09-0260202
O & G Docket No. 09-0261248

Reopened Hearing

Date: October 5, 2009

XTO Energy Inc.

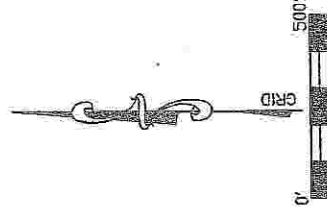
MIPA EXHIBIT

XTO ENERGY INC.

**TEXAS STEEL A UNIT
TARRANT COUNTY, TEXAS**

SCALE: 1" = 500'

From the Office of ELS Surveying & Mapping, Inc. /
Harry L. Johnson & Associates - Aledo, Texas



Appendix 8