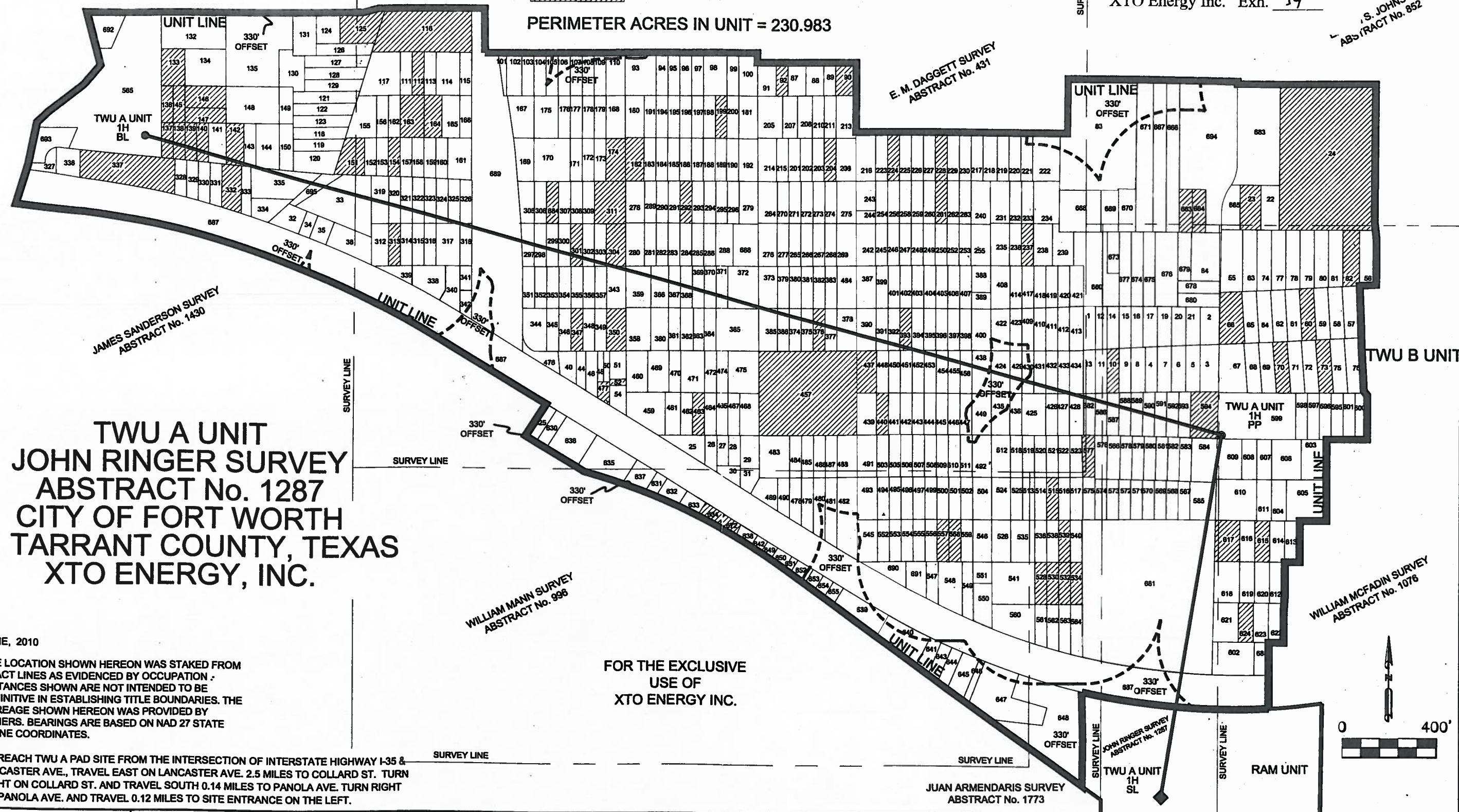


Docket No. 09-0264211
 June 4, 2010
 XTO Energy Inc. Exh. 14

S. JOHNSON
 ABSTRACT No. 852

UNLEASED TRACTS
 PERIMETER ACRES IN UNIT = 230.983



**TWU A UNIT
 JOHN RINGER SURVEY
 ABSTRACT No. 1287
 CITY OF FORT WORTH
 TARRANT COUNTY, TEXAS
 XTO ENERGY, INC.**

FOR THE EXCLUSIVE
 USE OF
 XTO ENERGY INC.

JUNE, 2010
 THE LOCATION SHOWN HEREON WAS STAKED FROM TRACT LINES AS EVIDENCED BY OCCUPATION. DISTANCES SHOWN ARE NOT INTENDED TO BE DEFINITIVE IN ESTABLISHING TITLE BOUNDARIES. THE ACREAGE SHOWN HEREON WAS PROVIDED BY OTHERS. BEARINGS ARE BASED ON NAD 27 STATE PLANE COORDINATES.

TO REACH TWU A PAD SITE FROM THE INTERSECTION OF INTERSTATE HIGHWAY I-35 & LANCASTER AVE., TRAVEL EAST ON LANCASTER AVE. 2.5 MILES TO COLLARD ST. TURN RIGHT ON COLLARD ST. AND TRAVEL SOUTH 0.14 MILES TO PANOLA AVE. TURN RIGHT ON PANOLA AVE. AND TRAVEL 0.12 MILES TO SITE ENTRANCE ON THE LEFT.

FORT WORTH SURVEYING 107 E COLLEGE AVENUE ALVARADO, TEXAS 76009 817-790-5900	JOB # 2009042 TWU_A_UNIT_MIPA_EXHIBIT_R4	DATE: 06/02/10 SHEET 1 OF 1	DRAWN: AJM CHECKED: RLH	TARRANT COUNTY TEXAS
---------------------------------------------------------------------------------------	---------------------------------------------	--------------------------------	----------------------------	-------------------------

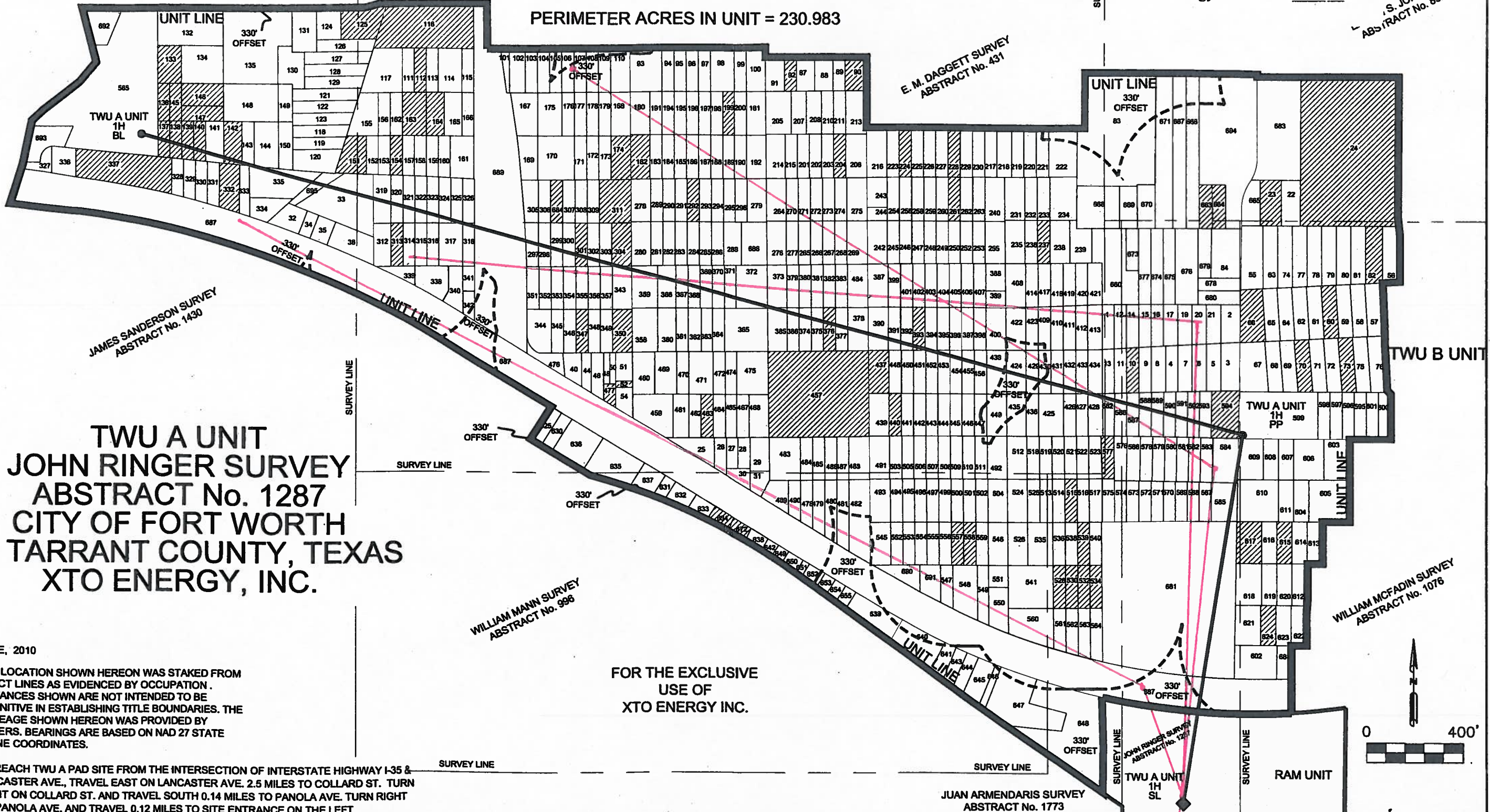
Appendix I

Docket No. 09-0264211
 June 4, 2010
 XTO Energy Inc. Exh. 34

S. JOHNSON
 ABSTRACT No. 852

 UNLEASED TRACTS

PERIMETER ACRES IN UNIT = 230.983



**TWU A UNIT
 JOHN RINGER SURVEY
 ABSTRACT No. 1287
 CITY OF FORT WORTH
 TARRANT COUNTY, TEXAS
 XTO ENERGY, INC.**

JUNE, 2010
 THE LOCATION SHOWN HEREON WAS STAKED FROM TRACT LINES AS EVIDENCED BY OCCUPATION. DISTANCES SHOWN ARE NOT INTENDED TO BE DEFINITIVE IN ESTABLISHING TITLE BOUNDARIES. THE ACREAGE SHOWN HEREON WAS PROVIDED BY OTHERS. BEARINGS ARE BASED ON NAD 27 STATE PLANE COORDINATES.

TO REACH TWU A PAD SITE FROM THE INTERSECTION OF INTERSTATE HIGHWAY I-35 & LANCASTER AVE., TRAVEL EAST ON LANCASTER AVE. 2.5 MILES TO COLLARD ST. TURN RIGHT ON COLLARD ST. AND TRAVEL SOUTH 0.14 MILES TO PANOLA AVE. TURN RIGHT ON PANOLA AVE. AND TRAVEL 0.12 MILES TO SITE ENTRANCE ON THE LEFT.

FOR THE EXCLUSIVE
 USE OF
 XTO ENERGY INC.

Appendix 2

FORT WORTH SURVEYING
 107 E COLLEGE AVENUE
 ALVARADO, TEXAS 76009
 817-790-5900

JOB # 2009042
 TWU_A_UNIT_MIPA_EXHIBIT_R4

DATE: 06/02/10
 SHEET 1 OF 1

DRAWN: AJM
 CHECKED: RLH

TARRANT COUNTY
 TEXAS