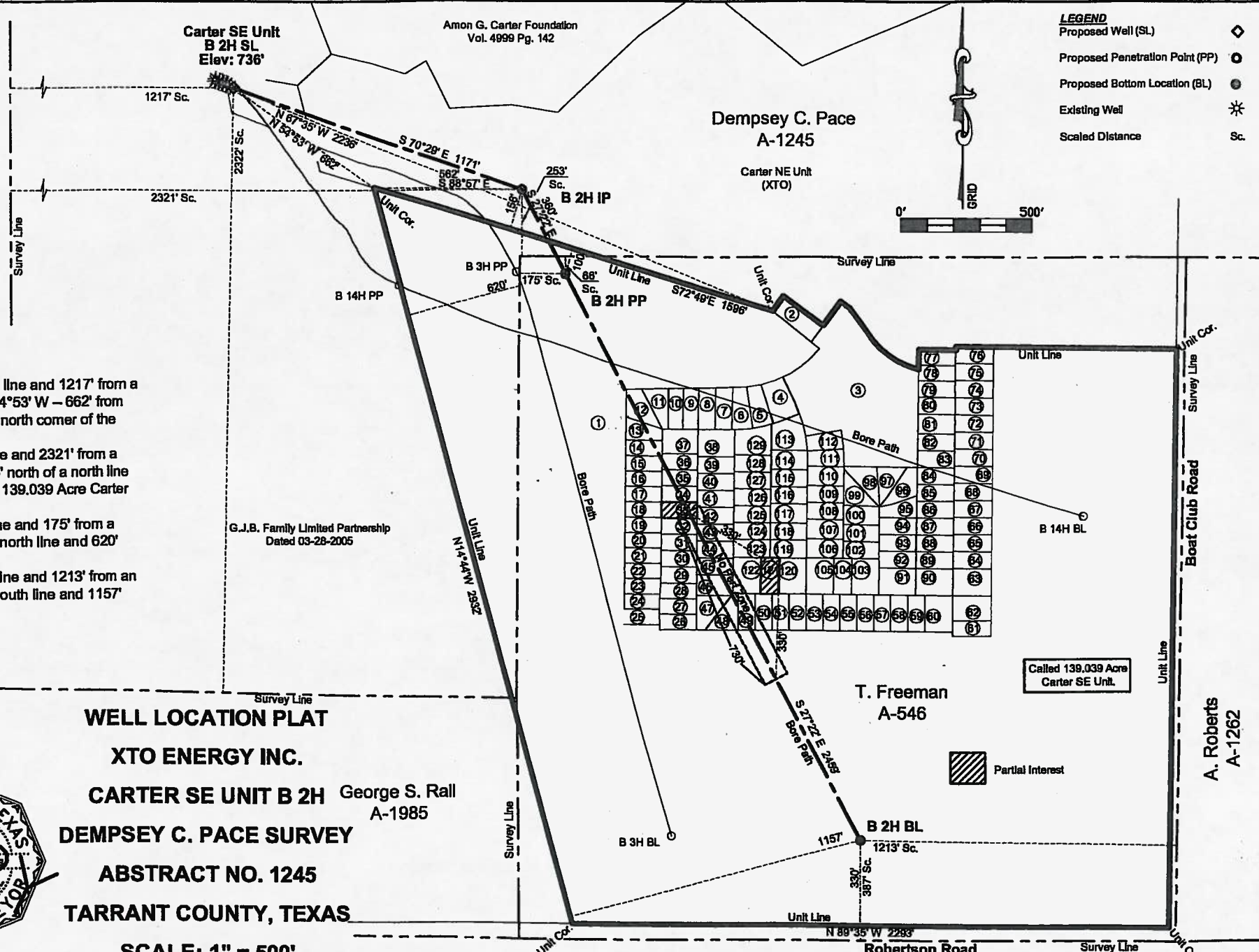


STATE PLANE COORDINATE DATUM
1927 NAD - TEXAS NORTH CENTRAL ZONE
CARTER SE UNIT B 2H
SURFACE LOCATION
(CONDUCTOR PIPE)
 X = 2,019,137' Y = 438,434'
 LAT = 32°52'18.50" N LONG = 97°26'15.60" W
INFLECTION POINT
 X = 2,020,241' Y = 438,043'
 LAT = 32°52'14.63" N LONG = 97°26'02.66" W
PENETRATION POINT
 X = 2,020,406' Y = 437,724'
 LAT = 32°52'11.47" N LONG = 97°26'00.73" W
BOTTOM LOCATION
 X = 2,021,536' Y = 435,540'
 LAT = 32°51'49.85" N LONG = 97°25'47.49" W

Surface Location is in the City of Fort Worth, Texas
 "Lake Worth" Quadrangle

Carter SE Unit B 2H Surface Location is located 2322' from a south line and 1217' from a west line of the Dempsey C. Pace Survey, Abstract No. 1245 and N 54°53' W - 662' from an exterior northwest corner and N 67°35' W - 2236' from an interior north corner of the Called 139.039 Acre Carter SE Unit.
Carter SE Unit B 2H Inflection Point is located 253' from a south line and 2321' from a west line of the Dempsey C. Pace Survey, Abstract No. 1245 and 156' north of a north line and S 88°57' E - 562' from an exterior northwest corner of the Called 139.039 Acre Carter SE Unit.
Carter SE Unit B 2H Penetration Point is located 66' from a north line and 175' from a west line of the T. Freeman Survey, Abstract No. 546 and 100' from a north line and 620' from a west line of the Called 139.039 Acre Carter SE Unit.
Carter SE Unit B 2H Bottom Location is located 387' from a south line and 1213' from an east line of the T. Freeman Survey, Abstract No. 546 and 330' from a south line and 1157' from a west line of the Called 139.039 Acre Carter SE Unit.



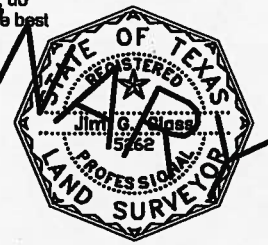
LEGEND
 Proposed Well (SL) ◆
 Proposed Penetration Point (PP) ○
 Proposed Bottom Location (BL) ●
 Existing Well ✱
 Scaled Distance Sc.



WELL LOCATION PLAT
XTO ENERGY INC.
CARTER SE UNIT B 2H
DEMPSEY C. PACE SURVEY
ABSTRACT NO. 1245
TARRANT COUNTY, TEXAS

SCALE: 1" = 500'

From the Office of ELS Surveying & Mapping, Inc. /
 Harry L. Johnson & Associates - Aledo, Texas



ing bore paths and perforation provided by XTO Energy, Inc. XAS
 ss, Registered Professional Land Surveyor, do y the above plat to be true and correct to the best edge.
 nson & Associates ng & Mapping, Inc. Professional Land Surveyor No. 52625, 2009.
 shown hereon was staked from tract encod by occupallon. Distances shown ided to be definitive in establishing title The acreage shown hereon were others. Bearings are based on NAD 27 Coordinates.
THE EXCLUSIVE USE OF XTO ENERGY INC.

Exhibit No. 15
Rule 37 Case No. 0265718
Date: August 11, 2010
XTO Energy, Inc.