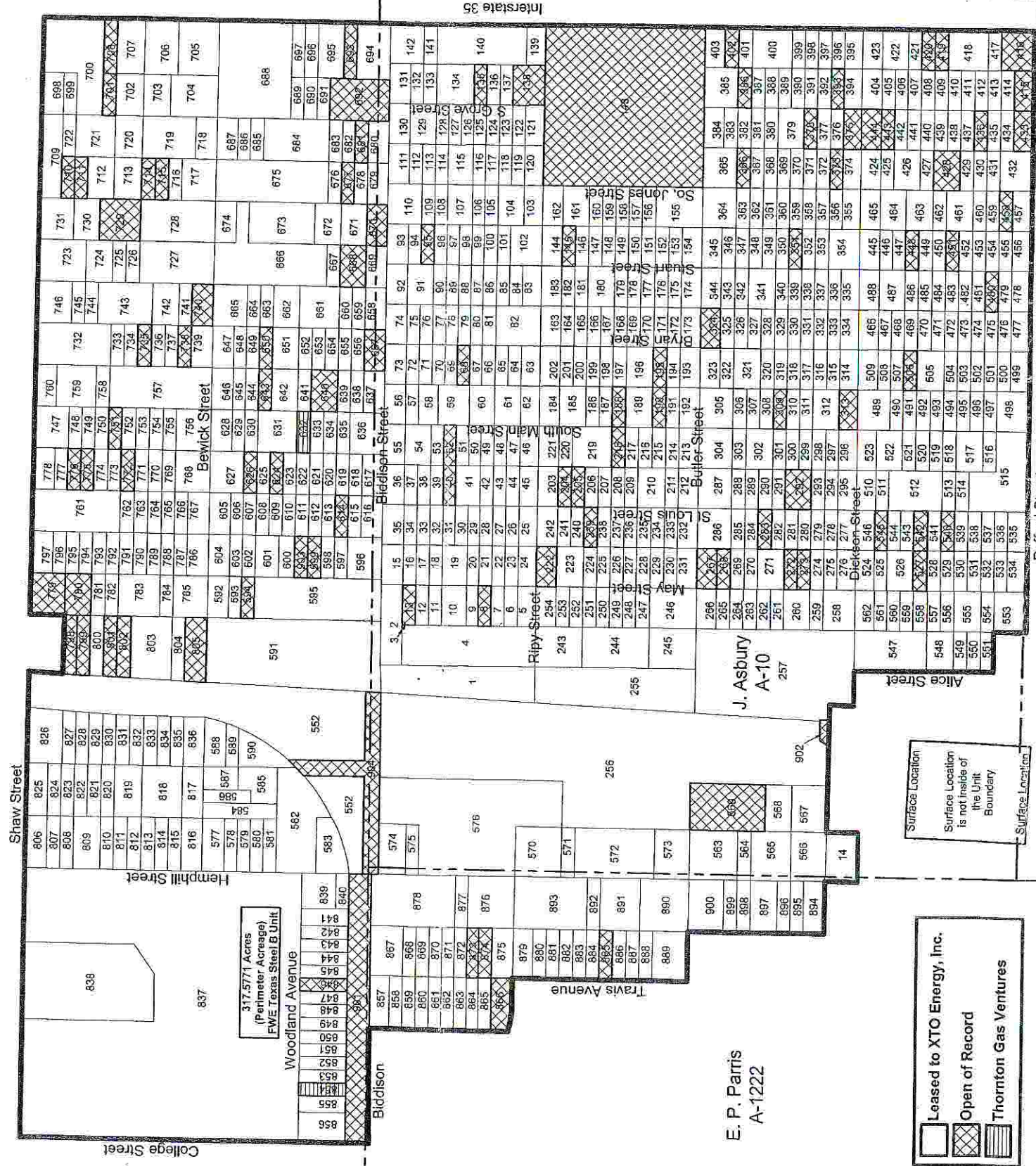


PROPOSAL FOR DECISION

APPENDIX 1

Lydia Jane Warwick
A-1663



E. P. Parris
A-1222

J. F. Ellis
A-490

Exhibit No. **3**
O & G Docket No. 09-0261248
Date: May 1, 2009
XTO Energy Inc.

April 28, 2009.
The location shown hereon was staked from tract lines as evidenced by occupation. Distances shown are not intended to be definitive in establishing title boundaries. The acreage shown hereon were provided by others. Bearings are based on NAD 27 State Plane Coordinates.
FOR THE EXCLUSIVE USE OF XTO ENERGY INC.

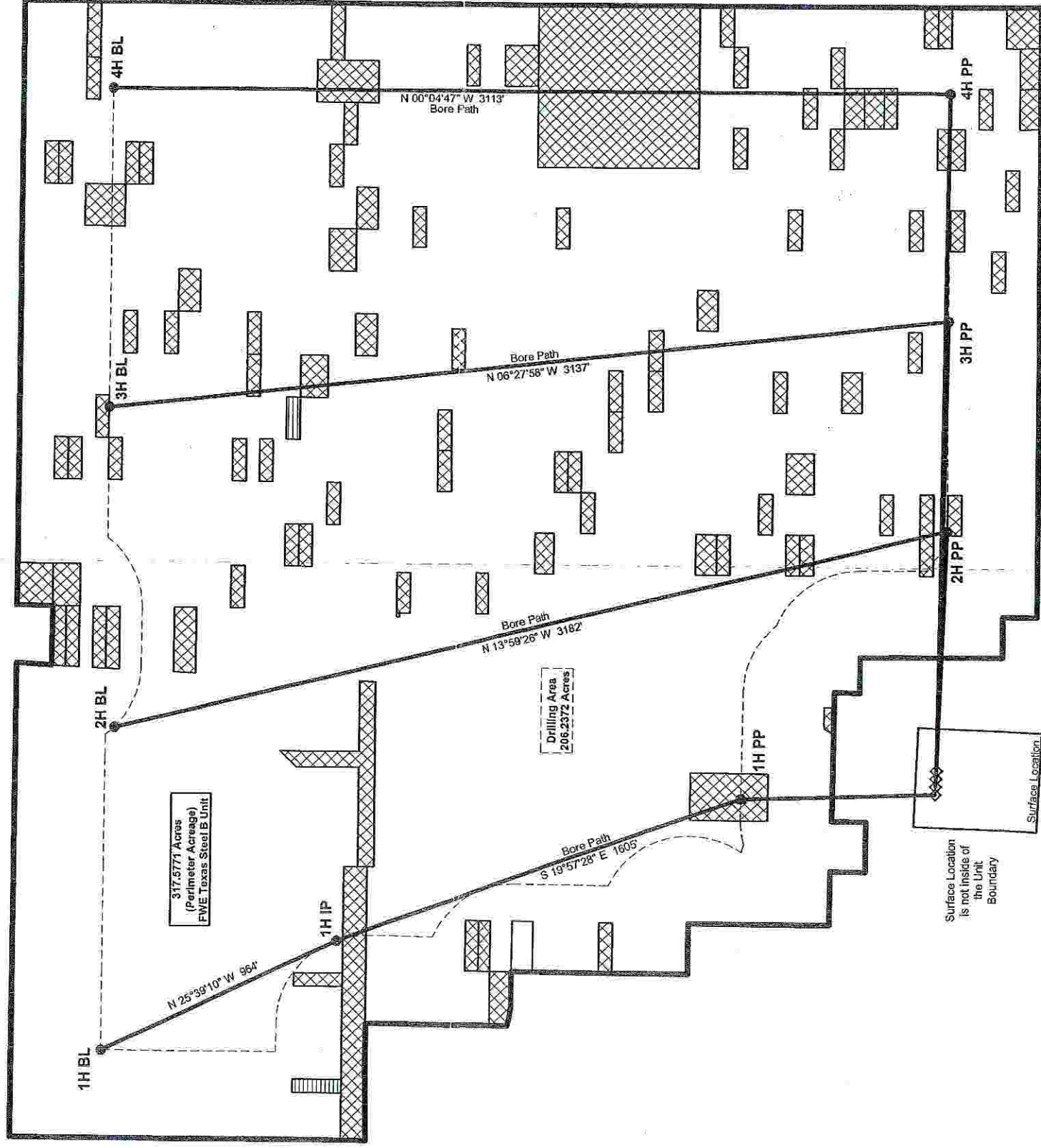
UNIT PLAT
XTO ENERGY INC.
TEXAS STEEL B UNIT
TARRANT COUNTY, TEXAS

SCALE: 1" = 500'

From the Office of ELS Surveying & Mapping, Inc. /
Harry L. Johnson & Associates - Aledo, Texas

PROPOSAL FOR DECISION

APPENDIX 2



- Leased to XTO Energy, Inc.
- Open of Record
- Thornton Gas Ventures

Exhibit No. **30**
 O & G Docket No. 09-0261248
 Date: May 1, 2009
 XTO Energy Inc.

Case # 3

UNIT PLAT
DRILLABLE AREA
XTO ENERGY INC.
TEXAS STEEL B UNIT
TARRANT COUNTY, TEXAS

SCALE: 1" = 500'

From the Office of ELS Surveying & Mapping, Inc./
 Harry L. Johnson & Associates - Aledo, Texas

April 28, 2009.
 The location shown hereon was staked from tract lines as evidenced by occupation. Distances shown are not intended to be definitive in establishing title boundaries. The acreage shown hereon were provided by others. Bearings are based on NAD 27 State Plane Coordinates.

**FOR THE EXCLUSIVE USE OF
 XTO ENERGY INC.**

PROPOSAL FOR DECISION

APPENDIX 3



270.8852 Acre
Texas Steel B Unit
(Perimeter Acreage)



STATE OF TEXAS

I, Jim G. Glass, Registered Professional Land Surveyor, do hereby certify the above plat to be true and correct to the best of my knowledge.
Harry L. Johnson & Associates
ELS Surveying & Mapping, Inc.

Registered Professional Land Surveyor No. 5262

July 13, 2009.
The location shown hereon was staked from tract lines as evidenced by occupation. Distances shown are not intended to be definitive in establishing title boundaries. The acreage shown hereon were provided by others. Bearings are based on NAD 27 State Plane Coordinates.

FOR THE EXCLUSIVE USE OF
XTO ENERGY INC.

	Leased to XTO Energy, Inc.
	Open of Record
	Partial Interest
	Chesapeake
	Thornton Gas Ventures

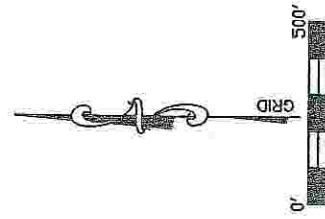


Exhibit No. 4
O & G Docket No. 09-0260202
O & G Docket No. 09-0261248
Reopened Hearing
Date: October 5, 2009
XTO Energy Inc.

MIPA EXHIBIT
XTO ENERGY INC.
TEXAS STEEL B UNIT
TARRANT COUNTY, TEXAS

SCALE: 1" = 500'

From the Office of ELS Surveying & Mapping, Inc./
Harry L. Johnson & Associates - Aledo, Texas

PROPOSAL FOR DECISION

APPENDIX 4



270.8852 Acres
Texas Steel B Unit
(Perimeter Acreage)

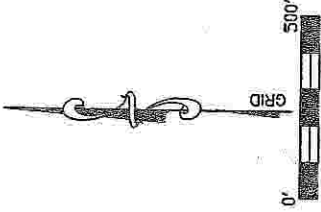


STATE OF TEXAS
I, Jim G. Glass, Registered Professional Land Surveyor, do hereby certify the above plat to be true and correct to the best of my knowledge.
Harry L. Johnson & Associates
ELS Surveying & Mapping, Inc.
Registered Professional Land Surveyor No. 5262

July 13, 2009.
The location shown hereon was staked from tract lines as evidenced by occupation. Distances shown are not intended to be definitive in establishing title boundaries. The acreage shown hereon were provided by others. Bearings are based on NAD 27 State Plane Coordinates.
**FOR THE EXCLUSIVE USE OF
XTO ENERGY INC.**

	Leased to XTO Energy, Inc.
	Open of Record
	Partial Interest
	Chesapeake
	Thornton Gas Ventures

Exhibit No. 8
O & G Docket No. 09-0260202
O & G Docket No. 09-0261248
Reopened Hearing
Date: October 5, 2009
XTO Energy Inc.



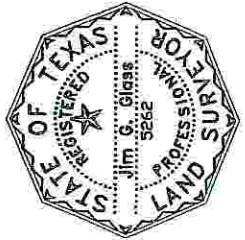
MIPA EXHIBIT
XTO ENERGY INC.
TEXAS STEEL B UNIT
TARRANT COUNTY, TEXAS

SCALE: 1" = 500'
From the Office of ELS Surveying & Mapping, Inc. /
Harry L. Johnson & Associates - Aledo, Texas

PROPOSAL FOR DECISION APPENDIX 5



270.8657 Acres
Texas Steel B Unit
(Perimeter Acreage)



	Leased to XTO Energy, Inc.
	Open of Record
	Partial Interest
	Chesapeake
	Thomton Gas Ventures

Exhibit No. 8
O & G Docket No. 09-0260202
O & G Docket No. 09-0261248
Reopened Hearing
Date: October 5, 2009
XTO Energy Inc.

STATE OF TEXAS
I, Jim G. Glass, Registered Professional Land Surveyor, do hereby certify the above plat to be true and correct to the best of my knowledge.
Harry L. Johnson & Associates
ELS Surveying & Mapping, Inc.
Registered Professional Land Surveyor No. 5262

July 13, 2009.
The location shown hereon was staked from tract lines as evidenced by occupation. Distances shown are not intended to be definitive in establishing title boundaries. The acreage shown hereon were provided by others. Bearings are based on NAD 27 State Plane Coordinates.
**FOR THE EXCLUSIVE USE OF
XTO ENERGY INC.**

MIPA EXHIBIT
XTO ENERGY INC.
TEXAS STEEL B UNIT
TARRANT COUNTY, TEXAS
SCALE: 1" = 500'
From the Office of ELS Surveying & Mapping, Inc. /
Harry L. Johnson & Associates - Aledo, Texas

FILED

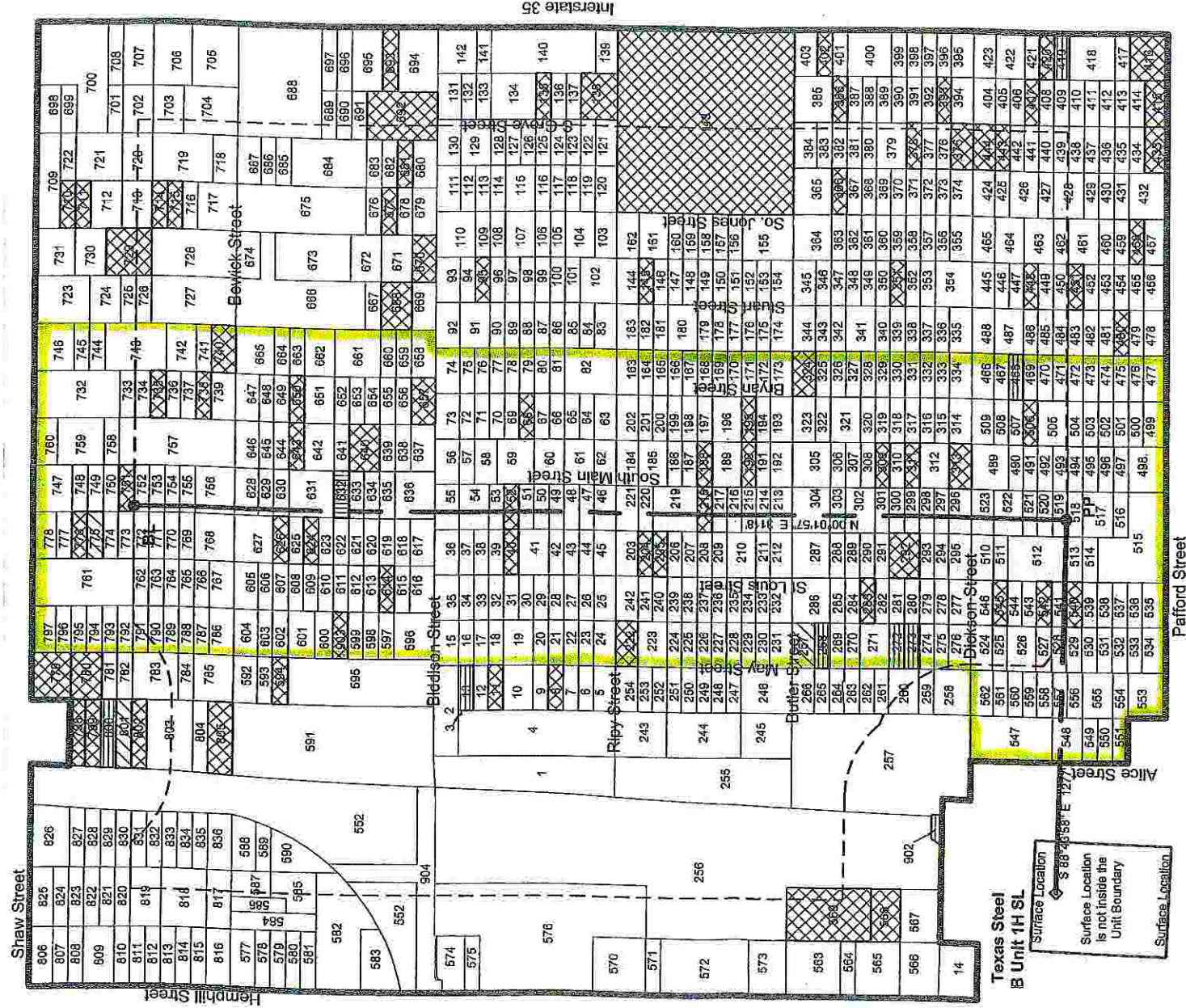
2009 DEC -3 PM 12:13

PROPOSAL FOR DECISION

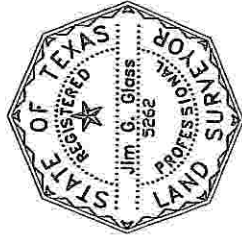
OFFICE OF GEN COUNSEL
RAILROAD COMMISSION
OF TEXAS

APPENDIX 6

Force Pooled Texas Steel "B" Unit



270.8652 Acre
Texas Steel B Unit
(Perimeter Acreage)



STATE OF TEXAS

I, Jim G. Glass, Registered Professional Land Surveyor, do hereby certify the above plat to be true and correct to the best of my knowledge.
Harry L. Johnson & Associates
ELS Surveying & Mapping, Inc.

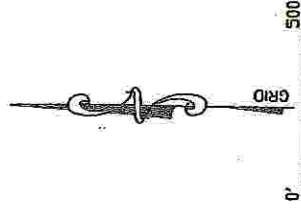
Registered Professional Land Surveyor No. 5262

July 13, 2009.
The location shown hereon was staked from tract lines as evidenced by occupation. Distances shown are not intended to be definitive in establishing title boundaries. The acreage shown hereon were provided by others. Bearings are based on NAD 27 State Plane Coordinates.

**FOR THE EXCLUSIVE USE OF
XTO ENERGY INC.**

Legend:

- Leased to XTO Energy, Inc.
- Open of Record
- Partial Interest
- Chesapeake
- Thornton Gas Ventures



MIPA EXHIBIT
XTO ENERGY INC.
TEXAS STEEL B UNIT
TARRANT COUNTY, TEXAS

SCALE: 1" = 500'
From the Office of ELS Surveying & Mapping, Inc. /
Harry L. Johnson & Associates - Alledo, Texas