

REGISTERED PROFESSIONAL SURVEYORS
HERBERT S. BEASLEY LAND SURVEYORS L.P.

- LAND
- TOPOGRAPHIC
- CONSTRUCTION SURVEYING

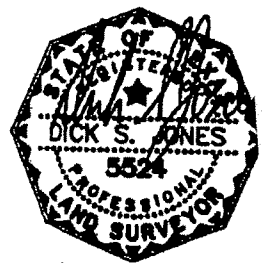
P. O. BOX 8873
 FORT WORTH, TEXAS 76124

METRO 817-429-0194
 FAX 817-446-5488

J. Justice
 A-859

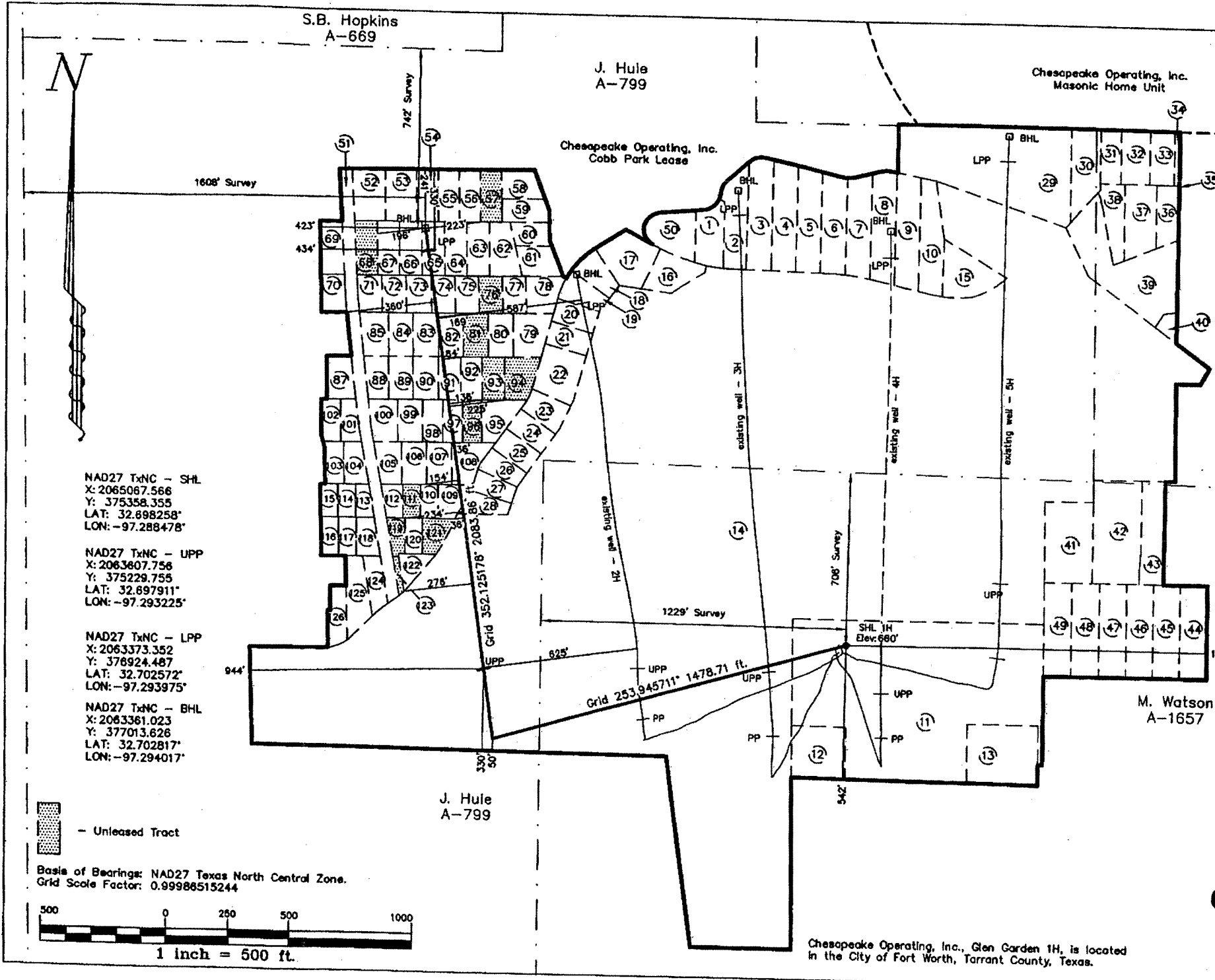
Chesapeake Operating, Inc., Glen Garden 1H, is located 708' FNL and 1229' FWL of the M. Watson Survey, Abstract No. 1657, Fort Worth, Tarrant County, Texas.

APPENDIX I



Prepared 29 January 2008
 Revised 12 September 2008

Well Plat
 Glen Garden 1H
CHESAPEAKE OPERATING, INC.
 142.161 Acre Glen Garden
 Fort Worth, Tarrant County, Texas.



NAD27 TxNC - SHL
 X: 2065067.566
 Y: 375358.355
 LAT: 32.698258°
 LON: -97.288478°

NAD27 TxNC - UPP
 X: 2063607.756
 Y: 375229.755
 LAT: 32.697911°
 LON: -97.293225°

NAD27 TxNC - LPP
 X: 2063373.352
 Y: 376924.487
 LAT: 32.702572°
 LON: -97.293975°

NAD27 TxNC - BHL
 X: 2063361.023
 Y: 377013.626
 LAT: 32.702817°
 LON: -97.294017°

