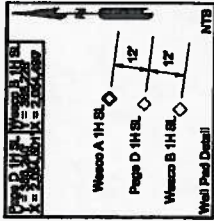


Surface Location is located in the city of Fort Worth, Texas
 "FORT WORTH" Quadrangle



Driving Directions:
 The pad is located in the City of Fort Worth.
 Take I-362 to Rossdale Street.
 Go West on Rossdale Street approx. 300'
 to the entrance to the pad on the left.

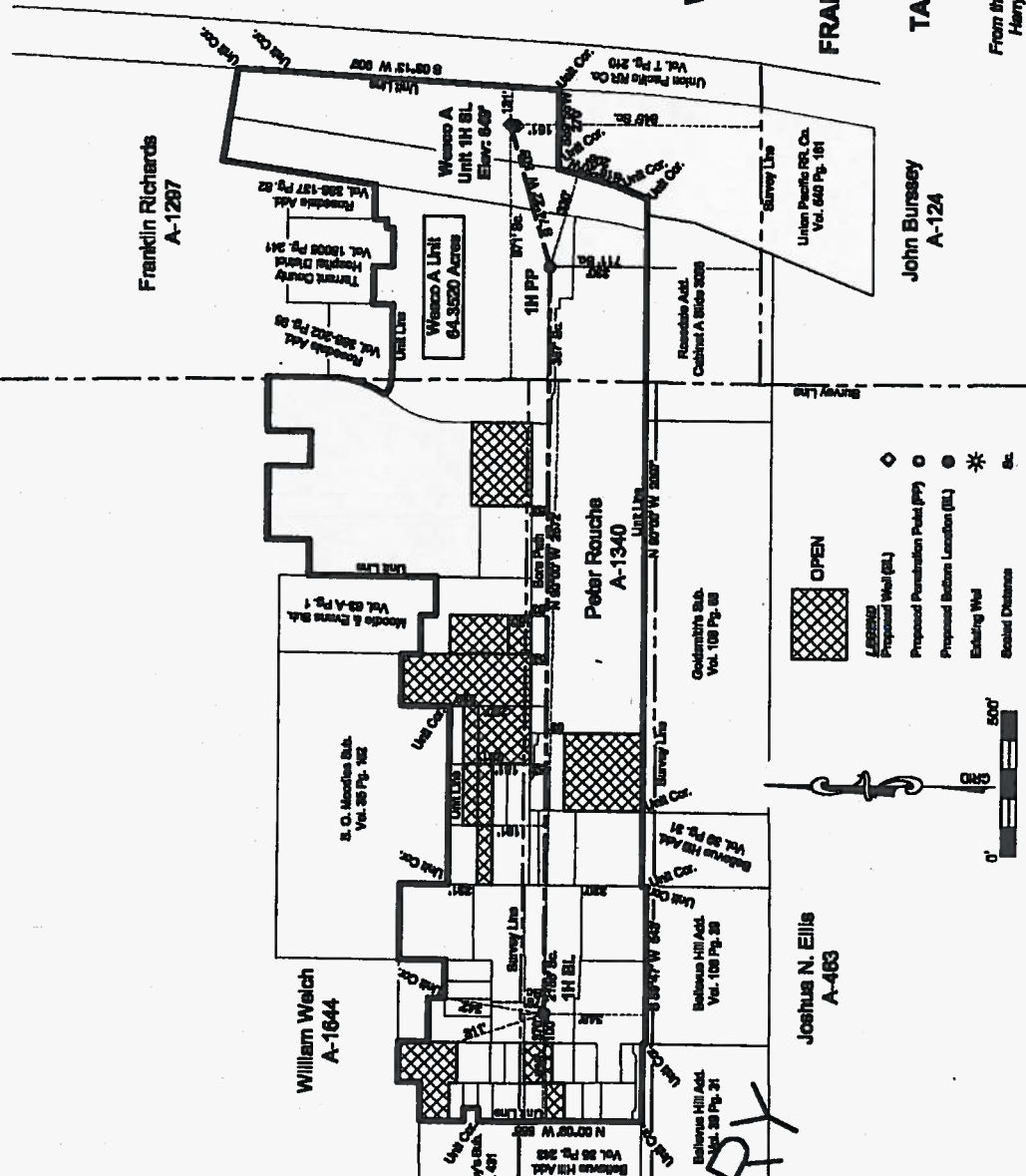
WELL LOCATION PLAT
XTO ENERGY INC.
WESCO A UNIT 1H
FRANKLIN RICHARDS SURVEY
ABSTRACT NO. 1297

TARRANT COUNTY, TEXAS

SCALE: 1" = 500'

From the Office of ELS Surveying & Mapping, Inc./
 Harry L. Johnson & Associates - Abledo, Texas

Map No. T-1064 - Rule 37



PLAT

STATE OF TEXAS
 I, Jim G. Glass, Registered Professional Land Surveyor, hereby certify this above plat to be true and correct to the best of my knowledge.
 Harry L. Johnson & Associates
 ELS Surveying & Mapping, Inc.
 Registered Professional Land Surveyor No. 26822

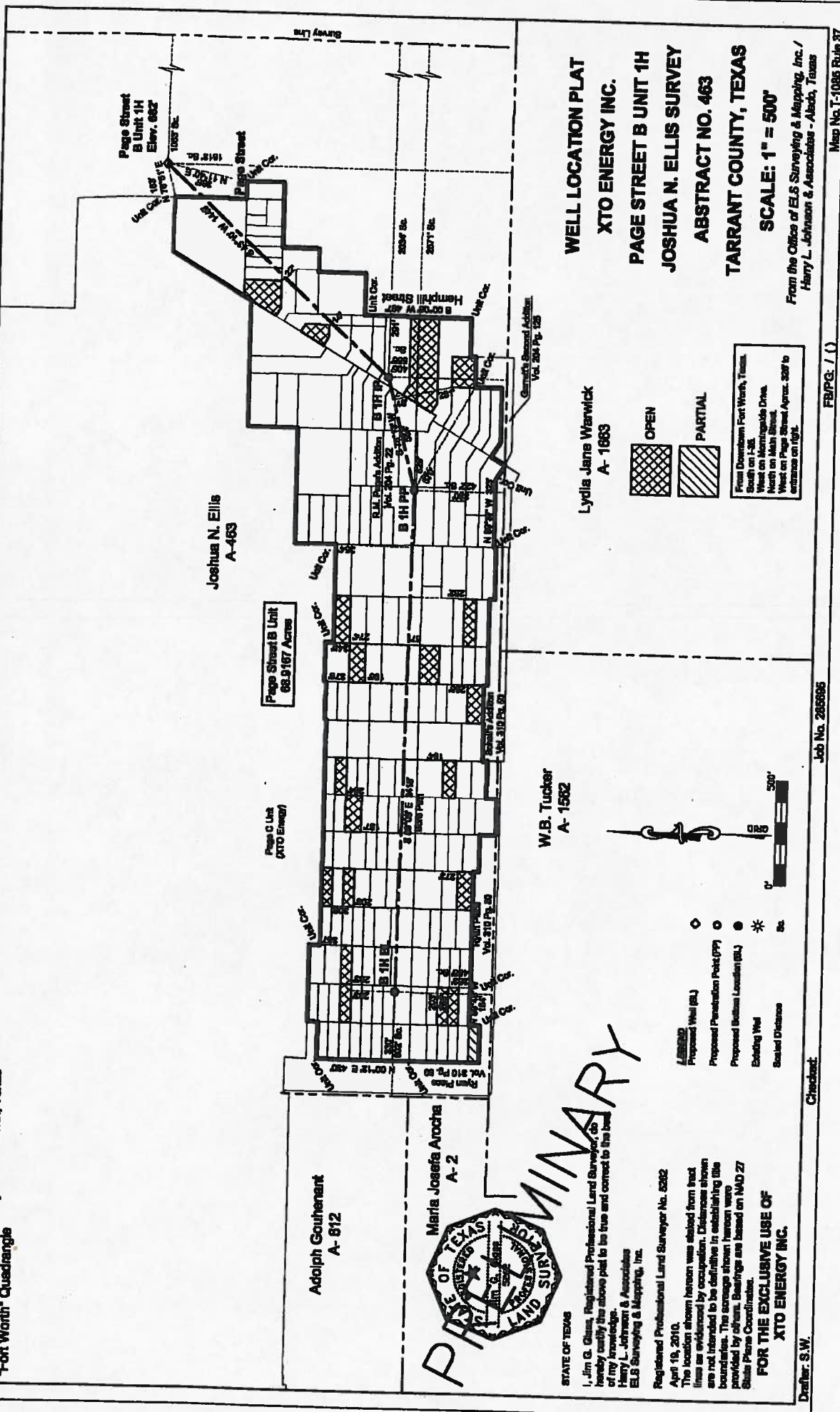
April 15, 2010.
 This location shown hereon was staked from land
 there as evidenced by occupation. Distances shown
 are not intended to be definitive in establishing title
 boundaries. The acreage shown hereon was
 provided by others. Bearings are based on NAD 83
 State Plane Coordinates.
FOR THE EXCLUSIVE USE OF
XTO ENERGY INC.

Checked: S.W.
 Drafter: C.S.

Job No. 2008009

FB/PG: 1804/14 (R)

Surface Location is in the City of Fort Worth, Texas
"Fort Worth" Quadrangle

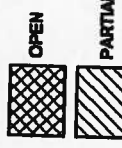


WELL LOCATION PLAT
XTO ENERGY INC.
PAGE STREET B UNIT 1H
JOSHUA N. ELLIS SURVEY
ABSTRACT NO. 463
TARRANT COUNTY, TEXAS

SCALE: 1" = 500'

From the Office of ELS Surveying & Mapping, Inc. /
 Harry L. Johnson & Associates - Abilene, Texas

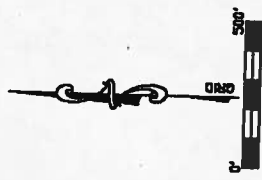
Map No. T-1086 Rule 37



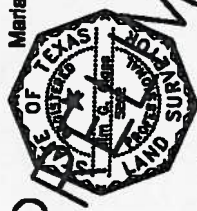
From Downtown Fort Worth, Texas,
 South on I-86
 West on Montague Drive
 West on Main Street
 West on Page Street Approx. 328' to
 entrance on right.

Lydia Jane Warwick
 A-1663

W.B. Tucker
 A-1582



- Proposed Well (BL)
- Proposed Penetration Point (PP)
- Proposed Surface Location (SL)
- Existing Well
- Sealed Cistern



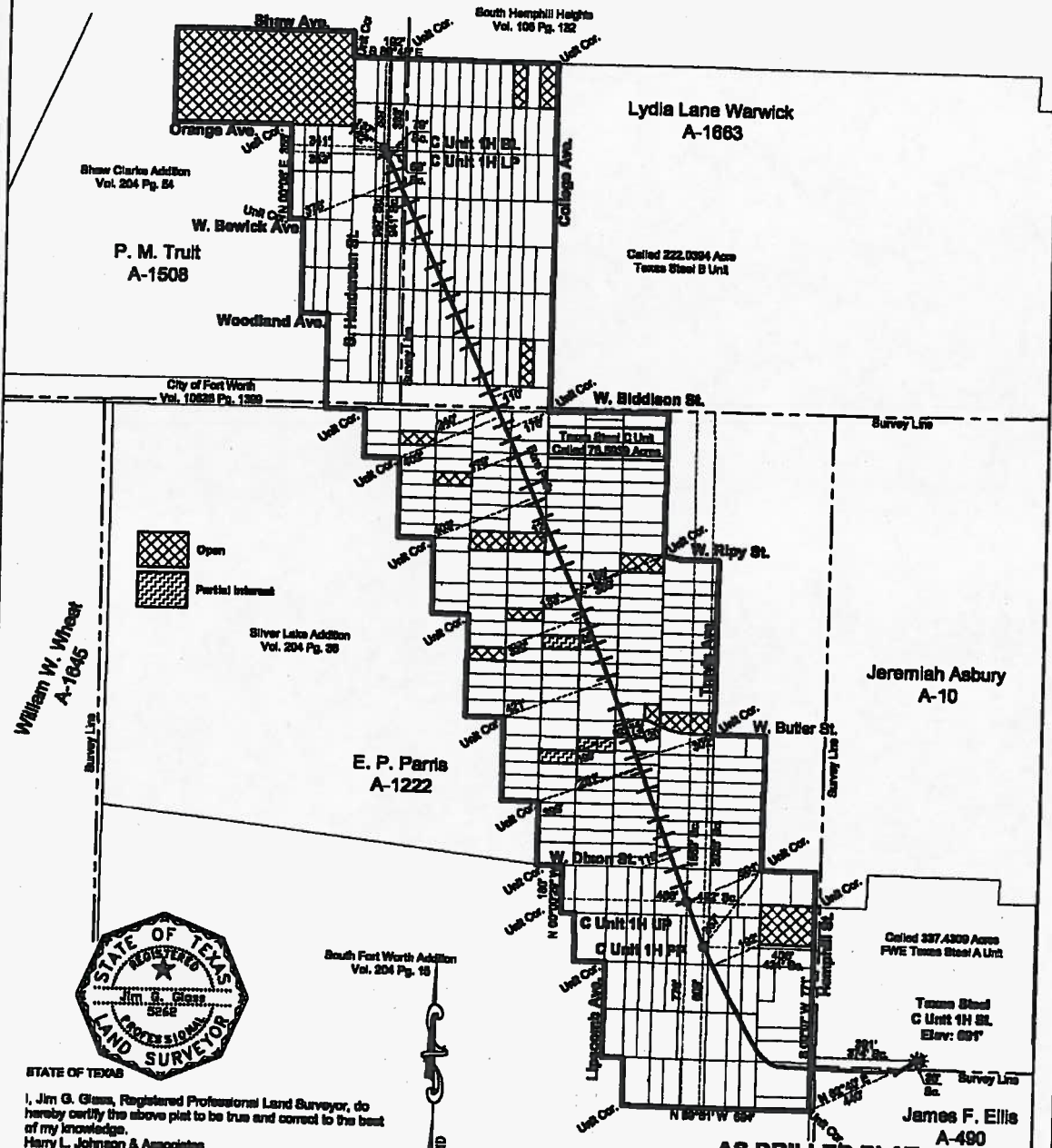
PRIMAVERIA

STATE OF TEXAS
 I, Jim G. Glass, Registered Professional Land Surveyor, do hereby certify the above plat to be true and correct to the best of my knowledge.
 Harry L. Johnson & Associates
 ELS Surveying & Mapping, Inc.
 Registered Professional Land Surveyor No. 6282
 April 19, 2010.
 The location shown hereon was obtained from tract lines as evidenced by occupation. Claims shown are not intended to be definitive in establishing title boundaries. The acreage shown hereon was provided by owner. Bearings are based on NAD 27 State Plane Coordinates.

FOR THE EXCLUSIVE USE OF
XTO ENERGY INC.

Draftsman: S.W.

Job No. 285895
 Checksheet
 FB/P/G: / ()



Open
Partial Interest



STATE OF TEXAS
I, Jim G. Glass, Registered Professional Land Surveyor, do hereby certify the above plat to be true and correct to the best of my knowledge.
Harry L. Johnson & Associates
ELS Surveying & Mapping, Inc.

Registered Professional Land Surveyor No. 5262
Note: Existing bore paths and perforation points were provided by XTO Energy, Inc. March 16, 2010.
The location shown hereon was obtained from tract lines as evidenced by occupation. Distances shown are not intended to be definitive in establishing title boundaries. The bearings shown hereon were provided by others. Bearings are based on NAD 27 State Plane Coordinates.

FOR THE EXCLUSIVE USE OF XTO ENERGY INC.

0' 500'

LEGEND

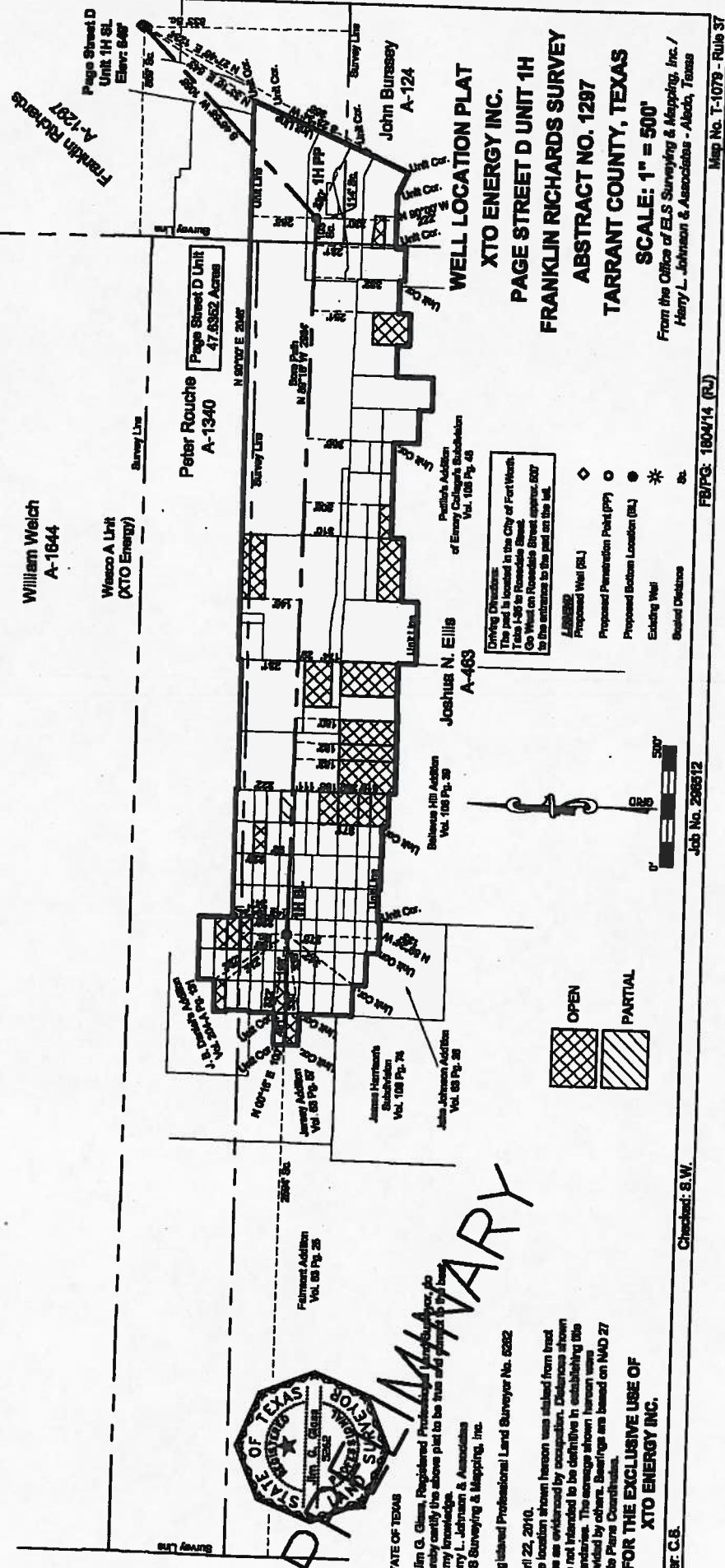
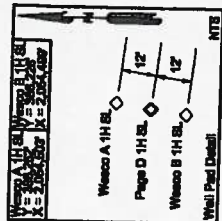
Existing Well	(BL)	*
Perforation Point	(PP)	○
Upper Perforation	(UP)	○
Lower Perforation	(LP)	○
Bottom Location	(BL)	■
Sealed Distance	So.	
Perforations		—+—+—

**AS DRILLED PLAT
XTO ENERGY INC.
TEXAS STEEL C UNIT 1H
JERAMIAH ASBURY SURVEY
ABSTRACT NO. 10
TARRANT COUNTY, TEXAS**

SCALE: 1" = 500'

From the Office of ELS Surveying & Mapping, Inc. / Harry L. Johnson & Associates - Alledo, Texas

Surface location is located in the city of Fort Worth, Texas
 "FORT WORTH" Quadrangle



XTO ENERGY INC.
PAGE STREET D UNIT 1H
FRANKLIN RICHARDS SURVEY
ABSTRACT NO. 1297
TARRANT COUNTY, TEXAS
SCALE: 1" = 500'

From the Office of ELS Surveying & Mapping, Inc.
 Henry L. Johnson & Associates - Abaco, Texas

Map No. 1-1079 - Rule 37

FB/PG. 1804/14 (R/L)

Job No. 286512

Checked: S.W.

Drafter: C.B.

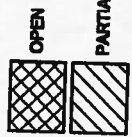
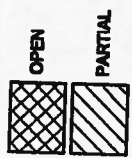


PRELIMINARY

STATE OF TEXAS
 I, Jim G. Glass, Registered Professional Land Surveyor, do hereby certify the above plat to be true and correct to the best of my knowledge.
 Henry L. Johnson & Associates
 ELS Surveying & Mapping, Inc.
 Registered Professional Land Surveyor No. 6282
 April 22, 2010.

The location shown hereon was obtained from tract lines as evidenced by associates. Discrepancies shown are not intended to be definitive in establishing the boundaries. The acreage shown hereon was provided by others. Bearings are based on NAD 83 State Plane Coordinates.

FOR THE EXCLUSIVE USE OF
XTO ENERGY INC.

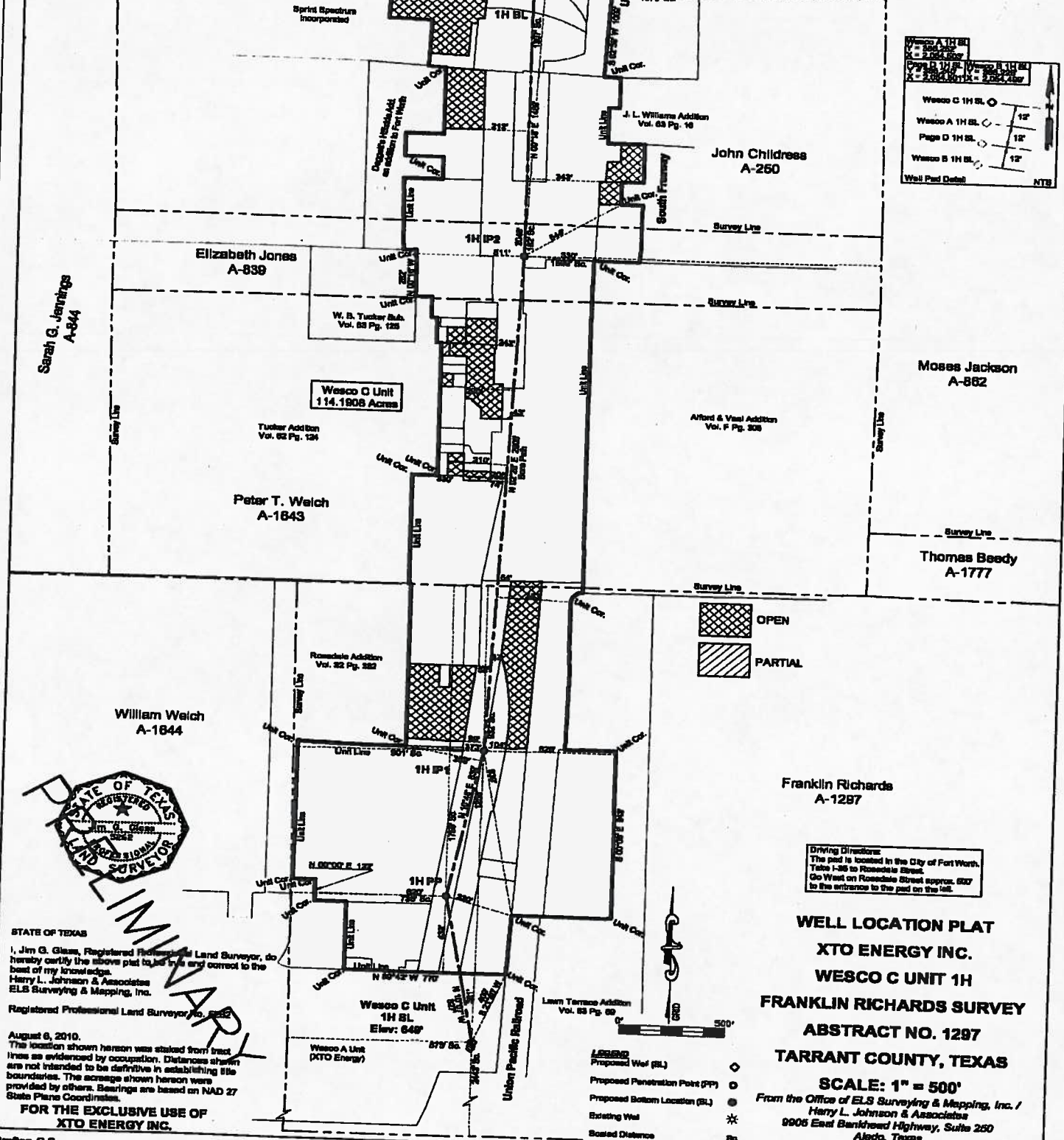
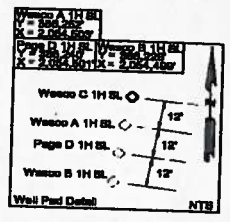


Driving Directions
 The pad is located in the City of Fort Worth. Take I-35 to Rowles Street approx. 500' Go West on Rowles Street approx. 500' to the entrance to the pad on the left.

- Proposed Well (BL) ◆
- Proposed Penetration Point (PP) ○
- Proposed Bottom Location (BL) ●
- Existing Well *
- Sealed Distance □

STATE PLANE COORDINATE DATUM
 1927 NAD - TEXAS NORTH CENTRAL ZONE
 WESCO C UNIT 1H
 SURFACE LOCATION
 (CALC'D BY E.L.S.)
 X = 2,054,505' Y = 386,264'
 LAT = 32°43'41.84" N LONG = 97°19'21.92" W
 PENETRATION POINT
 X = 2,054,360' Y = 387,078'
 LAT = 32°43'49.90" N LONG = 97°19'23.60" W
 INFLECTION POINT 1
 X = 2,054,517' Y = 387,903'
 LAT = 32°43'58.06" N LONG = 97°19'21.75" W
 INFLECTION POINT 2
 X = 2,054,637' Y = 390,706'
 LAT = 32°44'25.79" N LONG = 97°19'20.28" W
 BOTTOM LOCATION
 X = 2,054,643' Y = 392,195'
 LAT = 32°44'40.53" N LONG = 97°19'20.16" W

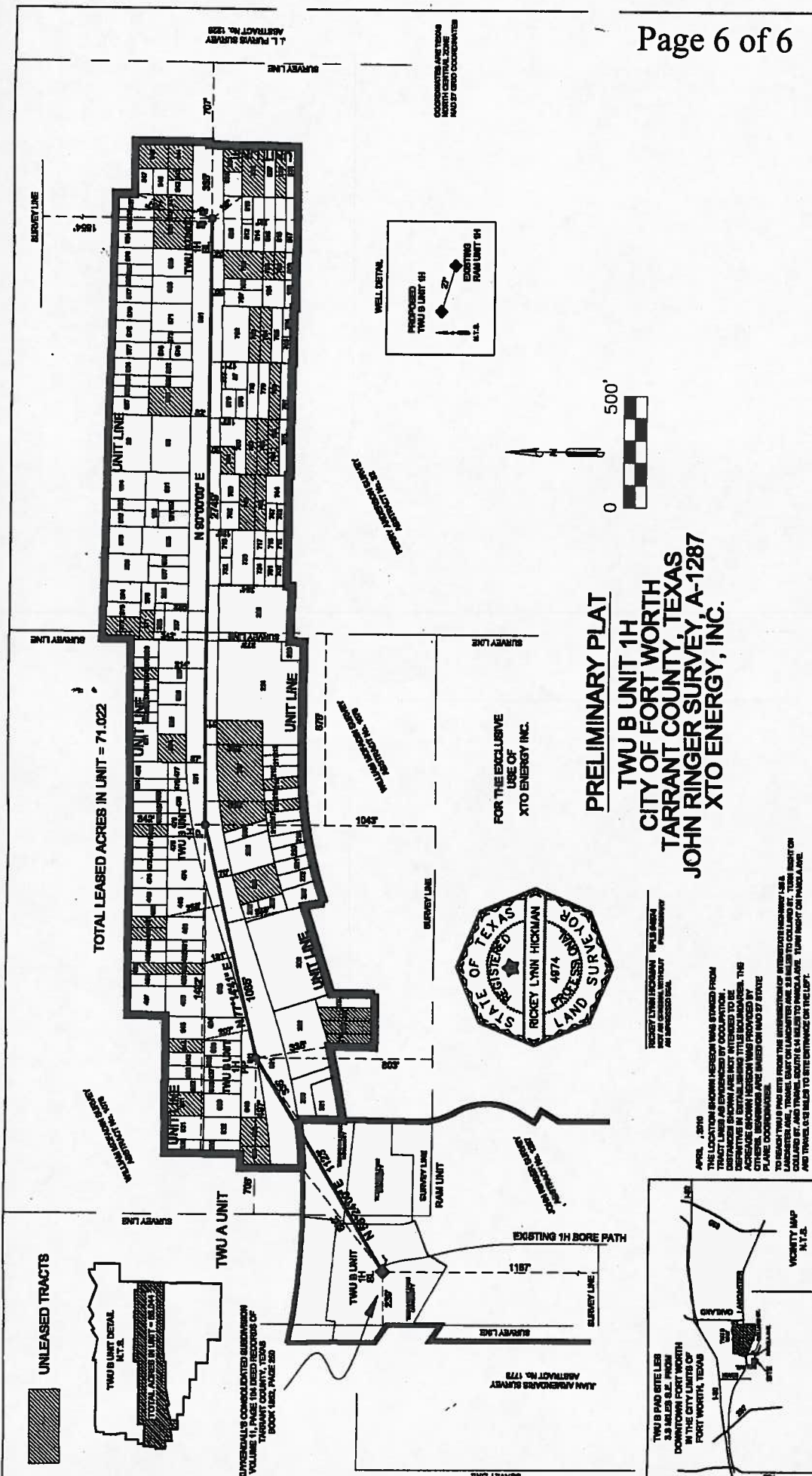
Surface Location is located in the city of Fort Worth, Texas
 "FORT WORTH" Quadrange



STATE OF TEXAS
 I, Jim G. Glass, Registered Professional Land Surveyor, do hereby certify the above plat to be true and correct to the best of my knowledge.
 Harry L. Johnson & Associates
 ELS Surveying & Mapping, Inc.
 Registered Professional Land Surveyor No. 2522

August 6, 2010.
 The location shown hereon was stated from tract lines as evidenced by occupation. Distances shown are not intended to be definitive in establishing title boundaries. The acreage shown hereon was provided by others. Bearings are based on NAD 27 State Plane Coordinates.

FOR THE EXCLUSIVE USE OF
 XTO ENERGY INC.

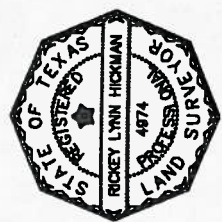


TOTAL LEASED ACRES IN UNIT = 71.022

FOR THE EXCLUSIVE USE OF XTO ENERGY INC.

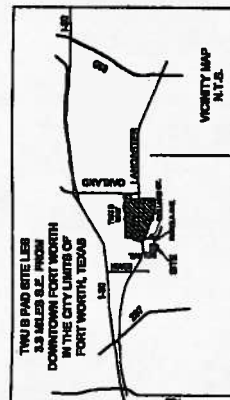
PRELIMINARY PLAT

**TWU B UNIT 1H
CITY OF FORT WORTH
TARRANT COUNTY, TEXAS
JOHN RINGER SURVEY, A-1287
XTO ENERGY, INC.**



ROCKY LYNN HICKMAN, REGISTERED PROFESSIONAL LAND SURVEYOR, NO. 4874, STATE OF TEXAS. THIS PLAT IS A PRELIMINARY PLAT AND DOES NOT CONSTITUTE A WARRANTY OF ANY KIND.

APRIL, 2010
THE LOCATION SHOWN HEREON WAS DERIVED FROM THE SURVEY OF THE CITY OF FORT WORTH, TEXAS, AND IS NOT INTENDED TO BE A SUBSTITUTE FOR A TITLE INSURANCE POLICY. THE ACRES SHOWN HEREON WAS PROVIDED BY THE CITY OF FORT WORTH, TEXAS, AND IS NOT INTENDED TO BE A SUBSTITUTE FOR A TITLE INSURANCE POLICY. THE CITY OF FORT WORTH, TEXAS, IS NOT RESPONSIBLE FOR THE ACCURACY OF THE INFORMATION SHOWN ON THIS PLAT. THE CITY OF FORT WORTH, TEXAS, IS NOT RESPONSIBLE FOR THE ACCURACY OF THE INFORMATION SHOWN ON THIS PLAT.



FOR FURTHER INFORMATION CONTACT:
FORT WORTH SURVEYING
107 E COLLEGE AVENUE
ALVARADO, TEXAS 76008
817-750-8800

JOB # 2008042
TWU_B_UNIT_PREL_PLAT_1H_R5

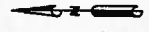
DATE: 04/28/10
SHEET 1 OF 2
DRAWN: AJM
CHECKED: RLH
TARRANT COUNTY
TEXAS

L.L. FURST'S SURVEY
ABSTRACT NO. 1287

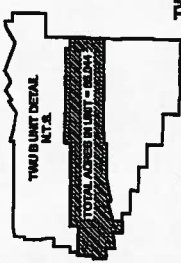
J.M. ARMSTRONG'S SURVEY
ABSTRACT NO. 1778

COORDINATES ARE TRIMMED
TO FIT THE SURVEY AND
MAY BE DIFFERENT

WELL DETAIL



UNLEASED TRACTS



REVIEWER'S COMMENTED SURVEYING
VOLUME 10, PART 1, SURVEY OF
TARRANT COUNTY, TEXAS
BOOK 182, PAGE 200